

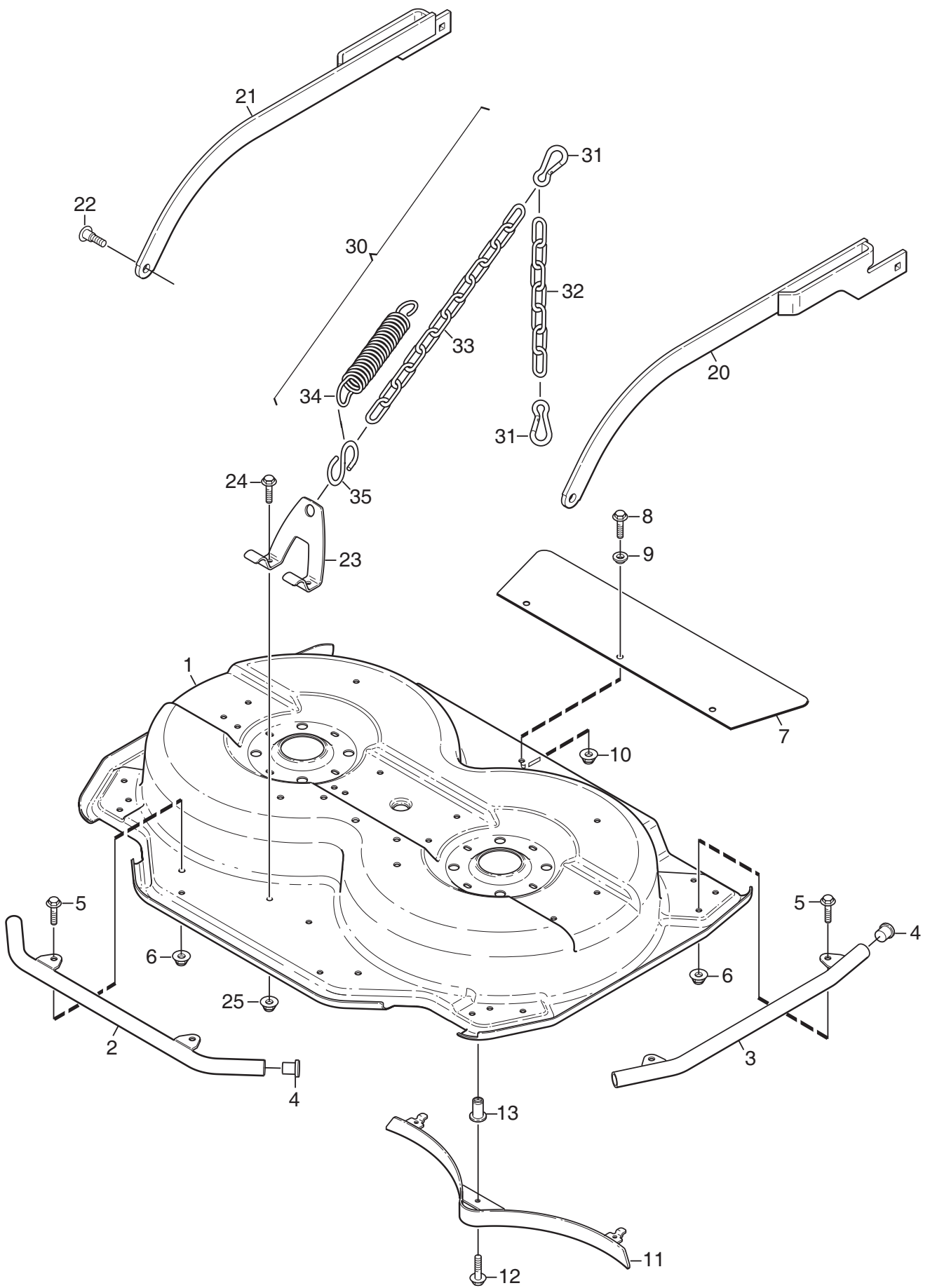
# **Original Ersatzteile**

---

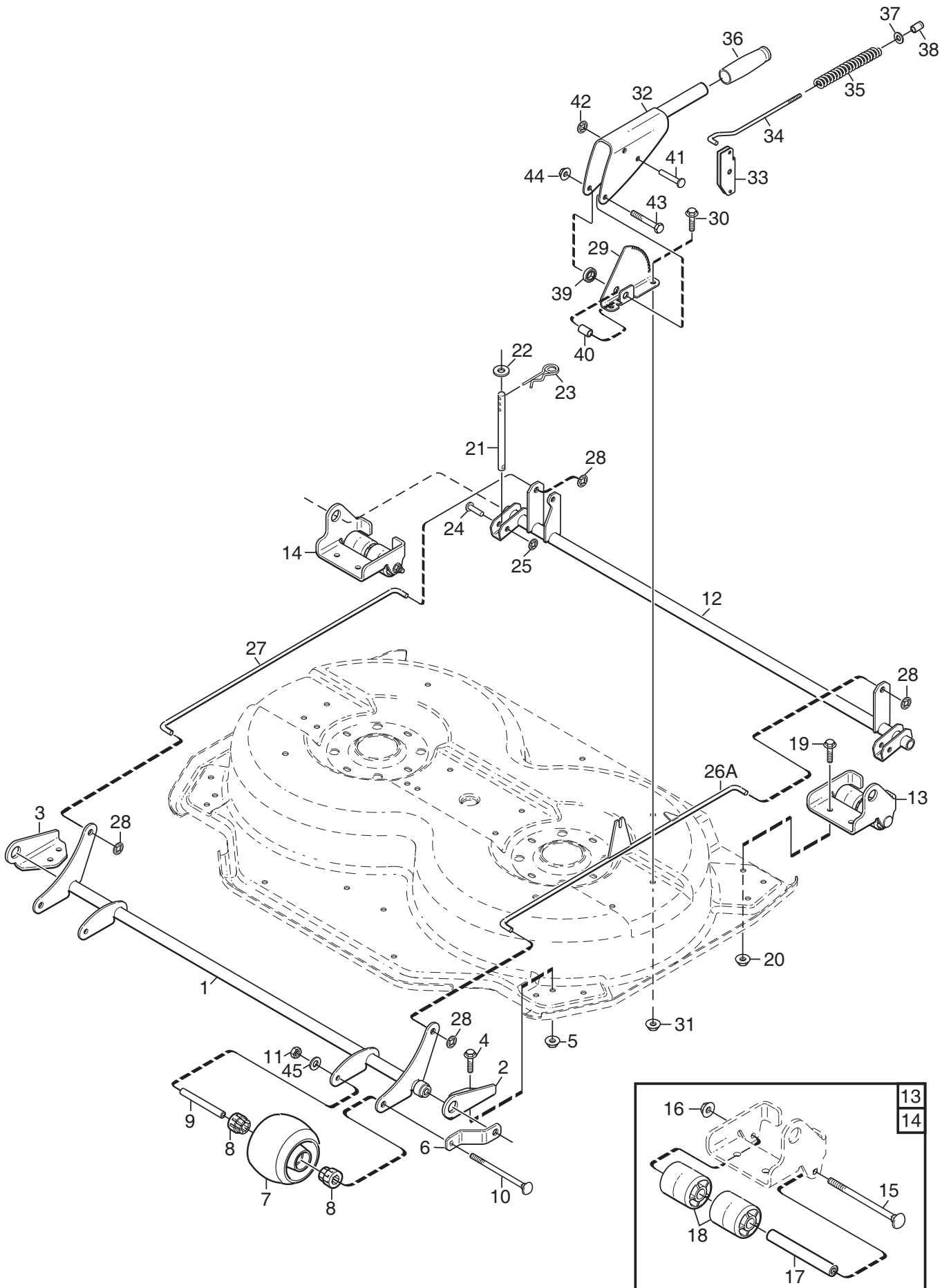
# **Genuine spare parts**

**GARTENGERÄTE  
LAWN & GARDEN MACHINES  
2009**

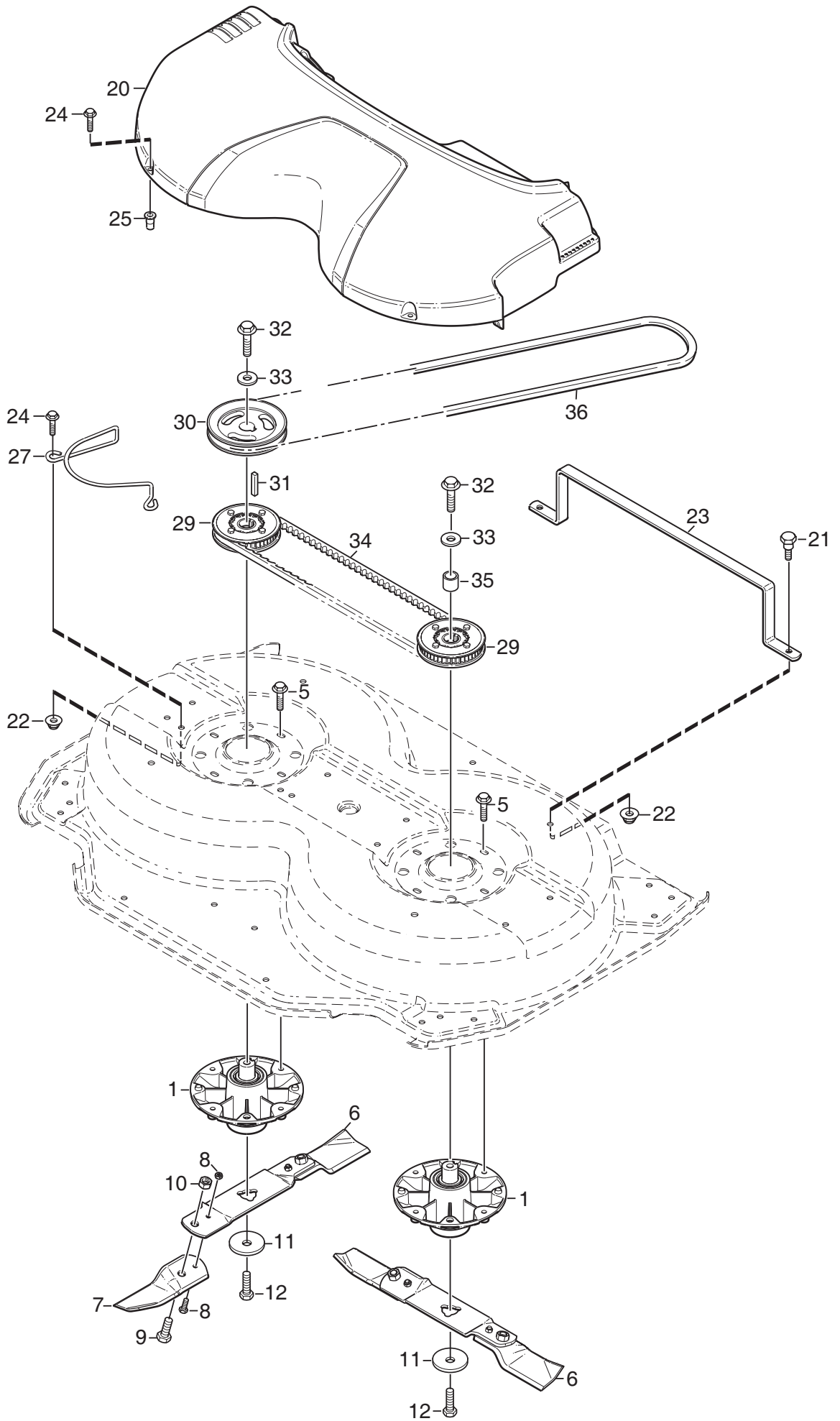








Ausgabe Issue 2009-31		Bild Nr Picture No C127		XM MÄHWERK 95C REGULIERUNGEN		XM MOWER DECK 95C CONTROLS		Seite Page 68	
Pos. Fig.	Anzahl/Quantity				Artikel Nr. Part No	Bezeichnung	Description	Satz Kit	Anmerkung Notes
	2963 -83								
1	1				1134-6275-02	Vorderachse- schwarz .....	Front axle- black.....		
2	1				1134-6214-03	Halter- L, schwarz.....	Bracket fr- LH, black.....		
3	1				1134-6214-04	Halter- R, schwarz .....	Bracket fr- RH, black .....		
4	4				9959-0816-16	Schraube .....	Screw .....		
5	4				9739-0831-22	Mutter .....	Nut .....		
6	2				1134-6278-02	Leitblech- schwarz.....	Guide- black .....		
7	2				1134-4284-01	Rad .....	Wheel.....		
8	4				1134-4319-01	Lager .....	Bearing.....		
9	2				1134-4318-01	Radachse.....	Wheel axle.....		
10	2				9897-0813-22	Schraube .....	Screw.....		
11	2				9747-0831-02	Mutter.....	Lock nut.....		
12	1				1134-6197-02	Hinterachse- schwarz .....	Rear axle- black.....		
13	1				1134-6282-01	Rollen- L, m.Halter.....	Roller- LH, w/bracket .....		Pos 15 - 18 incl.
14	1				1134-6282-02	Rollen- R, m.Halter .....	Roller- RH, w/bracket.....		Pos 15 - 18 incl.
15	1				9897-0813-02	• Schraube .....	• Screw .....		
16	1				9739-0831-22	• Mutter .....	• Nut .....		
17	1				1134-4318-01	• Radachse.....	• Wheel axle.....		
18	2				1134-6206-01	• Rollen .....	• Roller .....		
19	4				9959-0816-16	Schraube .....	Screw.....		
20	4				9739-0831-22	Mutter .....	Nut .....		
21	2				1134-6198-01	Stange .....	Stud .....		
22	2				9699-0104-02	Scheibe.....	Washer.....		
23	2				9598-2001-02	Schließnadel .....	Spring pin .....		
24	2				9646-0098-22	Niet.....	Rivet.....		
25	2				9675-0012-02	Verriegelungsscheibe .....	Locking washer.....		
26 A	1				1134-6249-02	Druckstange- L .....	Push rod- LH.....		
27	1				1134-6246-02	Druckstange- R.....	Push rod- RH.....		
28	4				9675-0015-02	Verriegelungsscheibe .....	Lock washer.....		
29	1				1134-6255-01	Höhenverstellsektor.....	Height adj. quadrant.....		
30	2				9959-0816-16	Schraube .....	Screw.....		
31	2				9739-0831-22	Mutter .....	Nut .....		
32	1				1134-6244-02	Höhenverst.hebel- schw .....	Height adj.lever- bl. ....		
33	1				1134-6254-01	Sperre.....	Catch.....		
34	1				1134-5444-01	Druckstange .....	Push rod .....		
35	1				1134-5445-01	Feder .....	Spring .....		
36	1				1134-5503-01	Griff .....	Handle.....		
37	1				9699-0087-02	Scheibe.....	Flat washer.....		
38	1				1134-3051-01	Sperrknopf.....	Locking knob .....		
39	1				1134-6286-03	Distanz.....	Spacer.....		
40	1				1134-1565-16	Distanz.....	Spacer.....		
41	2				9646-0105-22	Niet.....	Rivet.....		
42	2				9672-0006-02	Verriegelungsscheibe .....	Lock washer .....		
43	1				9997-0850-16	Schraube .....	Screw.....		
44	1				9747-0831-02	Mutter.....	Lock nut.....		
45	2				9699-0028-02	Scheibe.....	Flat washer.....		



C128A

Ausgabe Issue 2009-31		Bild Nr Picture No C128A		XM MÄHWERK 95C TRANSMISSION	XM MOWER DECK 95C TRANSMISSION	Seite Page 70			
Pos. Fig.	Anzahl/Quantity				Artikel Nr. Part No	Bezeichnung	Description	Satz Kit	Anmerkung Notes
	2963 -83								
1	2			1134-5831-01	Lagerbuchse kpl .....	Bearing box assy.....			
5	8			9945-0825-16	Schraube .....	Screw .....			
6	2			1134-6240-02	Messer kpl.....	Blade bar assy.....			Pos 7 incl.
7	1			1134-9119-01	• Messersatz .....	• Blade kit .....			Pos 8 - 10 incl.
8	1			1134-9054-01	•• Scherbolzensatz.....	•• Shear bolt kit.....			
9	2			1134-6311-01	•• Bolt .....	•• Bolt.....			7/16" UNF
10	2			1134-6312-01	•• Schloßmutter .....	•• Lock nut .....			7/16" UNF
11	2			1134-6211-01	Messerscheibe.....	Blade washer.....			
12	2			9997-1060-12	Schraube .....	Screw.....			
20	1			1134-6280-03	Deckel- grau.....	Transm.cover- grey .....			
21	2			1134-0240-01	Schulter-schraube.....	Shoulder screw .....			
22	4			9739-0831-22	Mutter .....	Nut .....			
23	1			1134-6423-01	Bügel .....	Bracket .....			
24	4			9945-0825-16	Schraube .....	Screw .....			
25	2			1134-5595-01	Nietmutter .....	Riveting nut.....			
27	1			1134-6429-01	Riemenführung.....	Belt guide .....			
29	2			1134-6287-01	Zahnriemenscheibe .....	Toothed belt pulley .....			
30	1			1134-6202-01	Riemenscheibe .....	Belt pulley .....			Ø = 161 mm
31	1			9600-0168-01	Keil .....	Key .....			
32	2			9997-1060-12	Schraube .....	Screw .....			
33	2			1134-5406-01	Scheibe.....	Washer.....			
34	1			9585-0162-01	Zahnriemen .....	Toothed belt .....			
35	1			1134-5400-04	Distanz.....	Spacer.....			
36	1			9585-0127-01	Keilriemen .....	V- belt.....			