

Mountfield

Illustrated Parts List

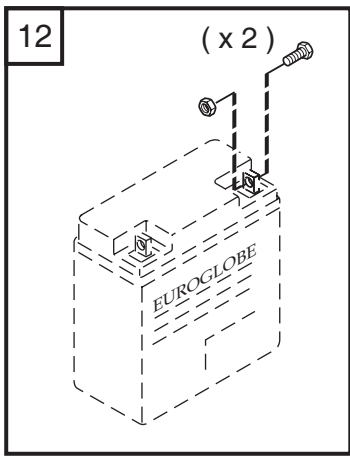
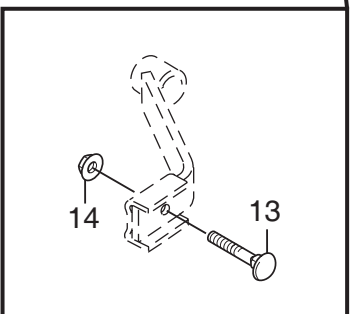
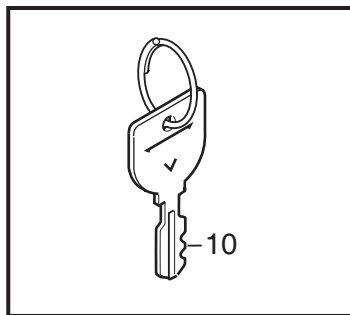
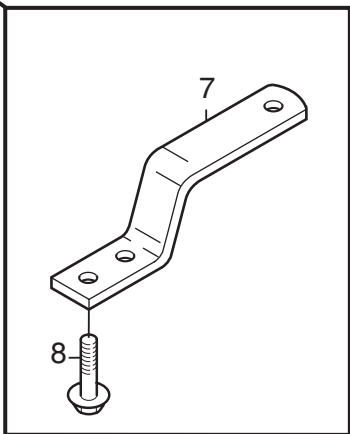
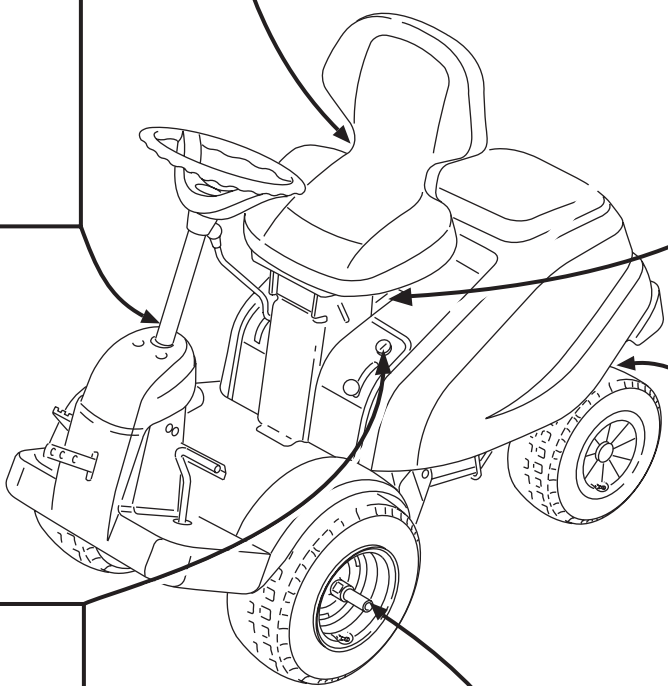
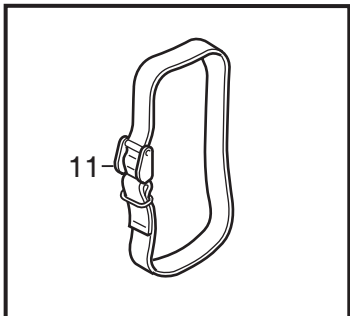
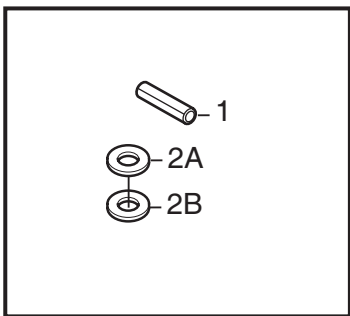
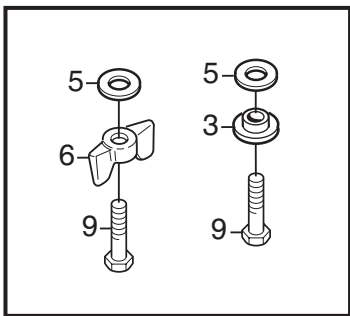
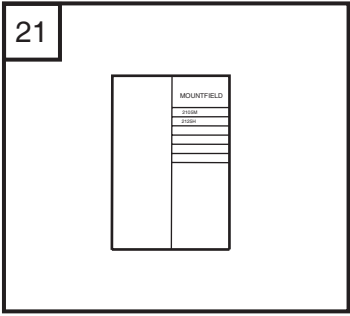
2105M-2125H

Model Year 2008

- Use GLOBAL GARDEN PRODUCT Genuine Spare Parts specified in the parts list for repair and/or replacement.
- The contents described in the parts list may change due to improvement.
- The drawings of the spare parts are only indicative and might not represent the part in question exactly.
- The indications "right" - "left" - "front" - "rear" refer to the position of the operator when using the machine.
- When placing orders of parts for repair and/or replacement, make sure that the illustrated parts list is the one applying to the machine's year of manufacture, as shown on the identification plate attached to the machine.

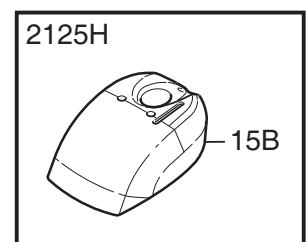
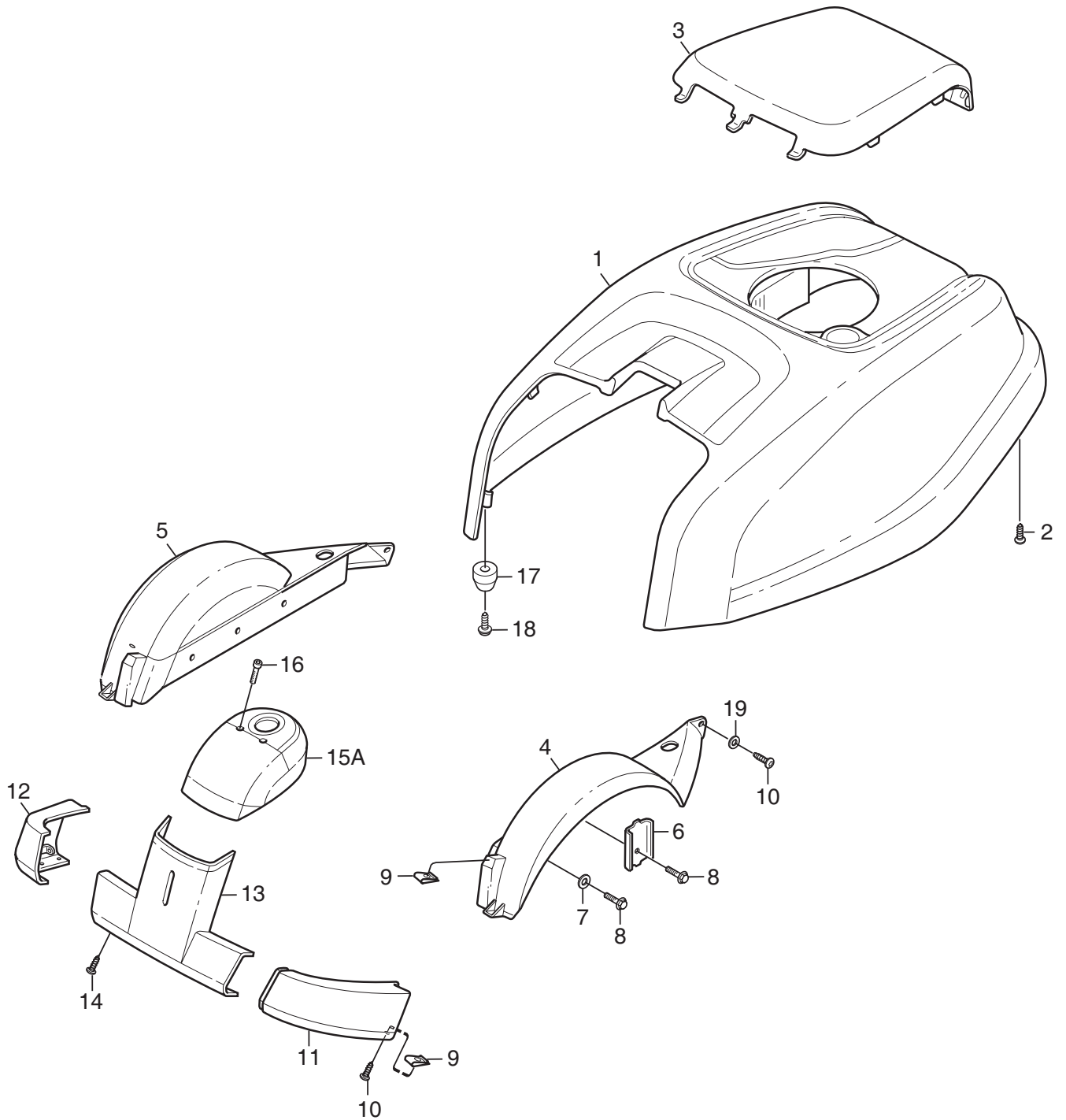
COPYRIGHT by GLOBAL GARDEN PRODUCTS

All rights reserved. No part of this material may be reproduced or transmitted, in any form or by any means, electronic or mechanical, including photocopying, recording or by any information storage and retrieval system, without permission in writing from GLOBAL GARDEN PRODUCTS.



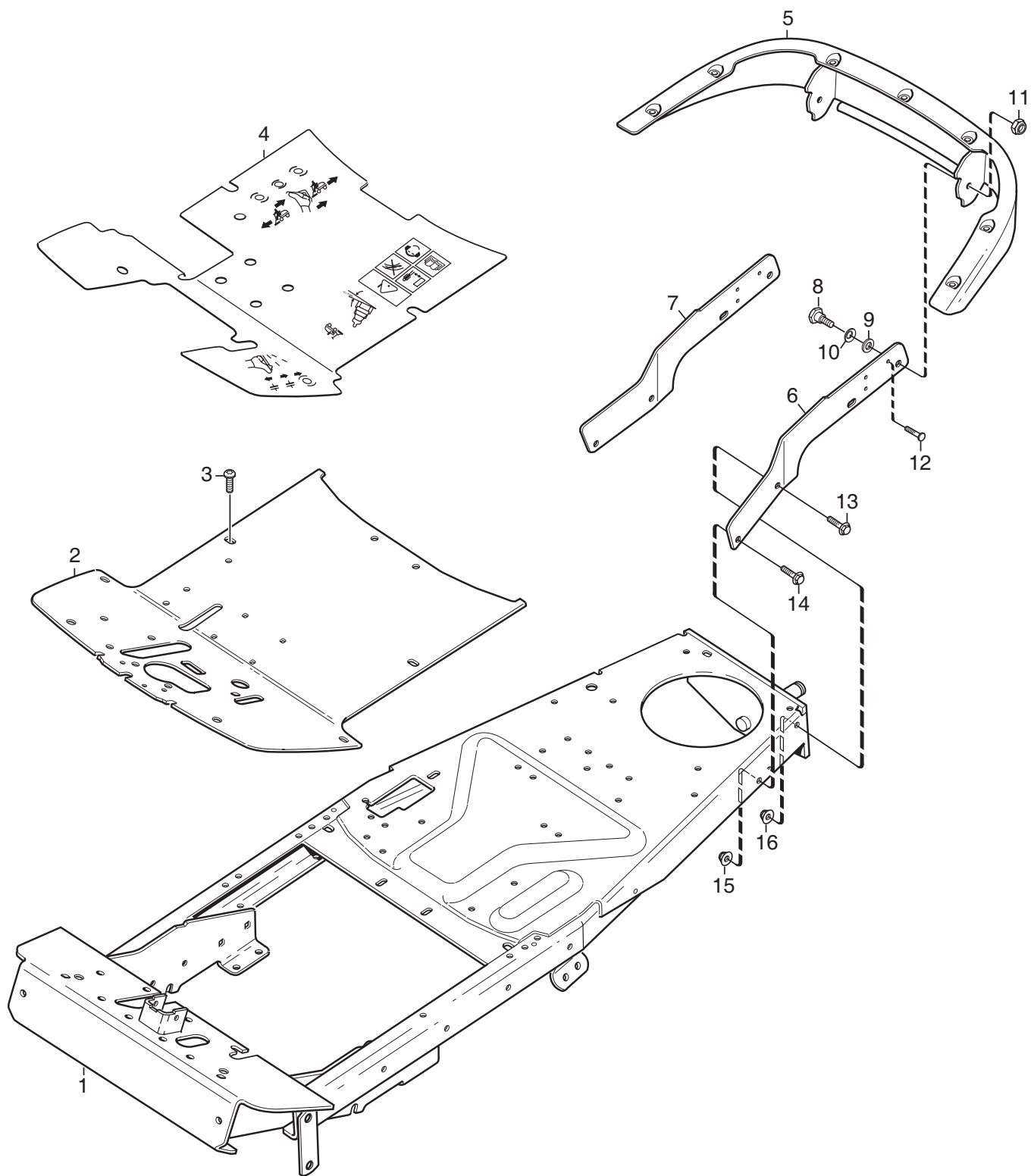
| Issue Ausgabe 2008-21 | | Picture No Bild Nr M176D | | 2105M- 2125H ASSEMBLY PARTS | | 2105M- 2125H MONTAGETEILEN | | Page Seite 26 | |
|-----------------------------|-----------------|--------------------------------|--|--------------------------------|-------------------------|-------------------------------|--------------------------|---------------------|--------------------|
| Fig. Pos. | Quantity/Anzahl | | | | Part No. Artikel Nr. | Description | Bezeichnung | Kit Satz | Notes Anmerkung |
| | 2715 | | | | | | | | |
| 1 | 1 | | | | 9595-0262-00 | Locating pin..... | Spannstift..... | | |
| 2A | 1 | | | | 9699-0103-02 | Flat washer | Scheibe | | 0.5 mm |
| 2B | 1 | | | | 9699-0114-02 | Flat washer | Scheibe | | 1.0 mm |
| 3 | 2 | | | | 1134-4185-01 | Flange washer..... | Flanschscheibe..... | | |
| 5 | 4 | | | | 9699-0056-02 | Flat washer | Scheibe | | |
| 6 | 2 | | | | 1134-4481-01 | Wing nut..... | Flügelmutter | | |
| 7 | 1 | | | | 1134-4627-01 | Tow bar..... | Anhängerstrebe..... | | |
| 8 | 2 | | | | 9959-0820-16 | Screw | Schraube..... | | |
| 9 | 4 | | | | 9997-0820-16 | Screw | Schraube..... | | |
| 10 | 1 | | | | 1134-6125-01 | Ignition key..... | Zündschlüssel..... | | |
| 11 | 1 | | | | 1134-5245-01 | Battery strap..... | Batterieriemen | | |
| 12 | 1 | | | | 1134-6113-01 | Battery screws..... | Batterieschrauben | | |
| 13 | 2 | | | | 9898-1035-16 | Screw | Schraube..... | | |
| 14 | 2 | | | | 9739-1031-22 | Nut..... | Mutter | | |
| 21 | 1 | | | | 8211-0061-80 | Owner's manual..... | Bedienungsanleitung..... | | |

X



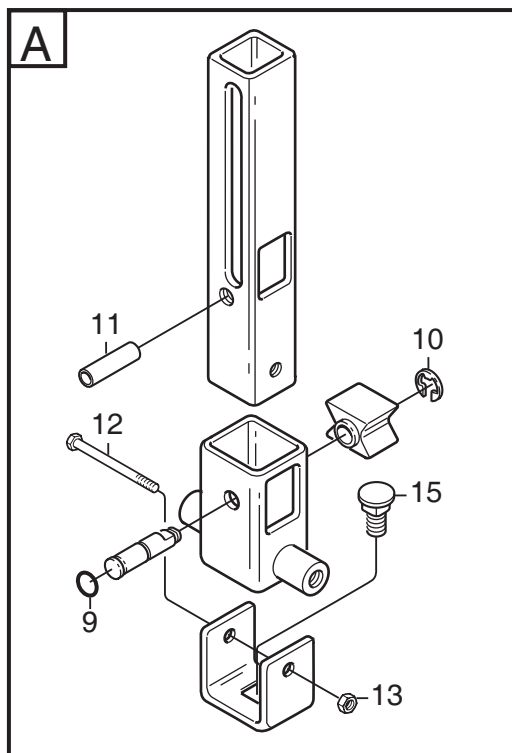
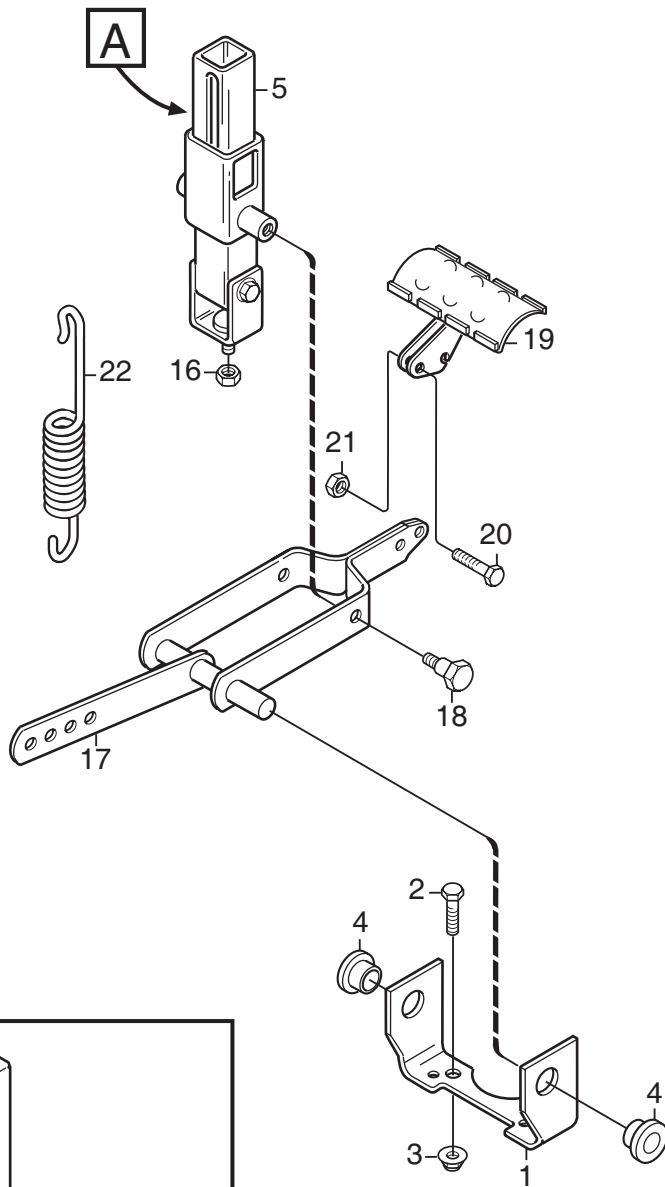
M177B

| Issue Ausgabe 2008-21 | | Picture No Bild Nr M177B | | 2105M- 2125H BODY WORK | | 2105M- 2125H KAROSSERIE | | Page Seite 28 | |
|-----------------------------|-----------------|--------------------------------|--|---------------------------|----------------------------|------------------------------|-------------|---------------------|--|
| Fig. Pos. | Quantity/Anzahl | | | Part No. Artikel Nr. | Description | Bezeichnung | Kit Satz | Notes Anmerkung | |
| | 2715 | 2716 | | | | | | | |
| 1 | 1 | 1 | | 1134-5283-03 | Engine hood- red | Motorhaube- rot | | | |
| 2 | 7 | 7 | | 9838-9530-12 | Screw | Schraube | | | |
| 3 | 1 | 1 | | 1134-5284-03 | Engine cover- black | Motordeckel- schwarz | | | |
| 4 | 1 | 1 | | 1134-5307-03 | Mud guard- LH, black | Kotflügel- L, schwarz | | | |
| 5 | 1 | 1 | | 1134-5307-04 | Mud guard- RH, black | Kotflügel- R, schwarz | | | |
| 6 | 2 | 2 | | 1134-0225-00 | Support plate | Stützblech | | | |
| 7 | 4 | 4 | | 9699-0056-02 | Flat washer | Scheibe | | | |
| 8 | 6 | 6 | | 9945-0816-16 | Screw | Schraube | | | |
| 9 | 4 | 4 | | 1134-4176-01 | Clips | Klemme | | | |
| 10 | 4 | 4 | | 9893-0616-16 | Screw | Schraube | | | |
| 11 | 1 | 1 | | 1134-5306-03 | Bumper, front- LH | Stoßfänger, vordere- L | | | |
| 12 | 1 | 1 | | 1134-5306-04 | Bumper, front- RH | Stoßfänger, vordere- R | | | |
| 13 | 1 | 1 | | 1134-5305-02 | Front lower- red | Vorderteil untere- rot | | | |
| 14 | 6 | 6 | | 9893-0616-16 | Screw | Schraube | | | |
| 15A | 1 | | | 1134-5304-02 | Front upper- red | Vorderteil- obere | | | |
| 15B | | 1 | | 1134-5320-04 | Front upper- red | Vorderteil obere- rot | | | |
| 16 | 2 | 2 | | 9946-0525-16 | Screw | Schraube | | | |
| 17 | 2 | 2 | | 1134-4790-02 | Hood guide | Haubenführung | | | |
| 18 | 2 | 2 | | 9838-9530-12 | Screw | Schraube | | | |
| 19 | 2 | 2 | | 9699-0060-02 | Flat washer | Scheibe | | | |

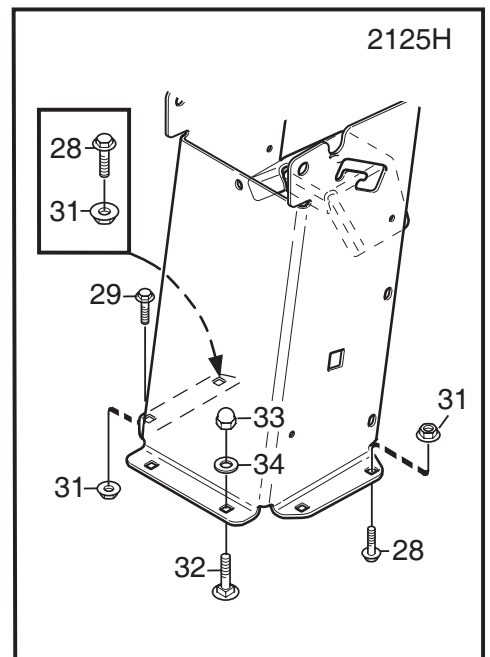
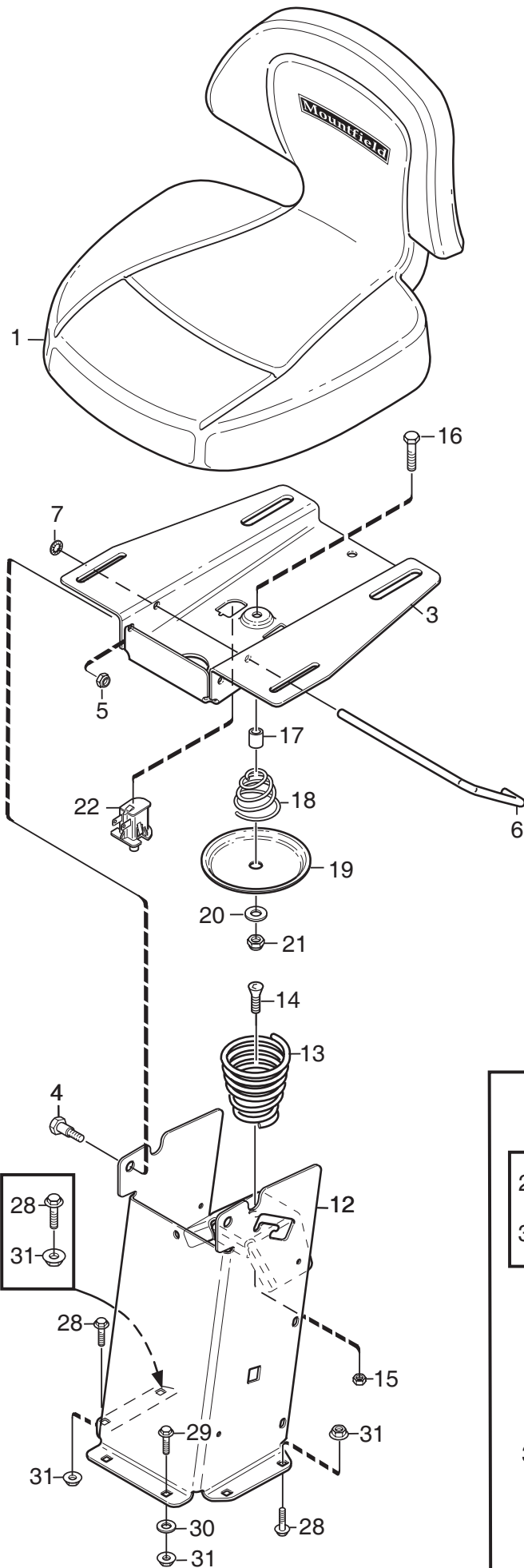


M178A

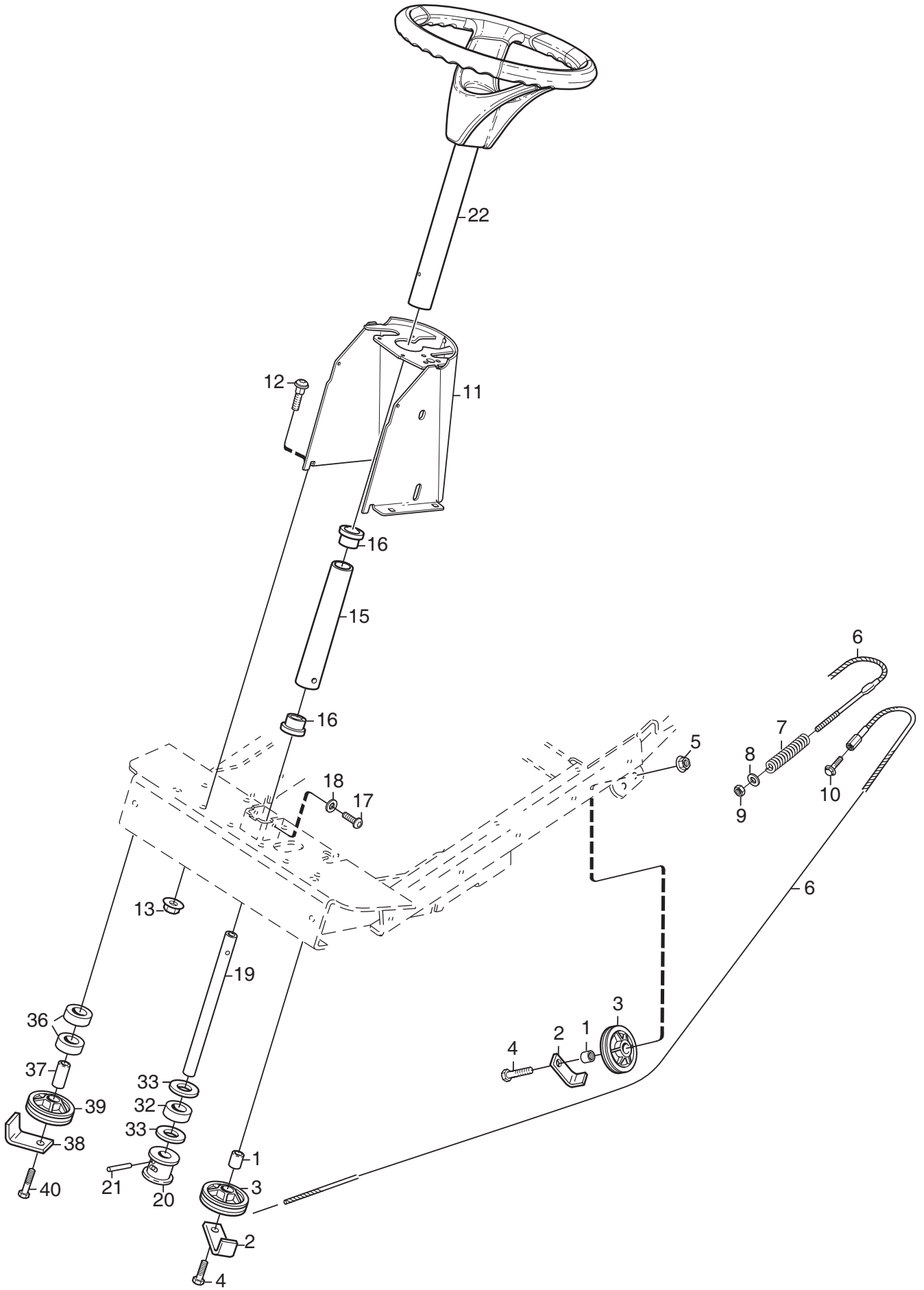
| Issue Ausgabe 2008-21 | | Picture No Bild Nr M178A | | 2105M- 2125H FRAME | | 2105M- 2125H RAHMEN | | Page Seite 30 | |
|-----------------------------|-----------------|--------------------------------|--|-------------------------|----------------------|---------------------------|-------------|---------------------|--|
| Fig. Pos. | Quantity/Anzahl | | | Part No. Artikel Nr. | Description | Bezeichnung | Kit Satz | Notes Anmerkung | |
| | 2715 | 2716 | | | | | | | |
| 1 | 1 | 1 | | 1134-5546-02 | Frame | Rahmen | | | |
| 2 | 1 | 1 | | 1134-5293-02 | Floor plate..... | Bodenblech | | | |
| 3 | 2 | 2 | | 9893-0616-16 | Screw | Schraube..... | | | |
| 4 | 1 | | | 1134-5338-02 | Floor mat | Bodenblechmatte | | | |
| 4 | | 1 | | 1134-5339-02 | Floor mat | Bodenblechmatte | | | |
| 5 | 1 | 1 | | 1134-5453-01 | Bumper- rear | Stoßfänger- hintere | | | |
| 6 | 1 | 1 | | 1134-5334-01 | Attachment- LH..... | Halterung- L | | | |
| 7 | 1 | 1 | | 1134-5334-02 | Attachment- RH | Halterung- R | | | |
| 8 | 2 | 2 | | 1134-0240-00 | Shoulder screw..... | Ansatzbolzen | | | |
| 9 | 2 | 2 | | 1134-4242-01 | Spacer washer | Distanzscheibe | | | |
| 10 | 2 | 2 | | 9694-0001-00 | Washer | Scheibe | | | |
| 11 | 2 | 2 | | 9747-0831-02 | Lock nut | Mutter | | | |
| 12 | 2 | 2 | | 9943-0516-16 | Screw | Schraube..... | | | |
| 13 | 2 | 2 | | 9959-0820-16 | Screw | Schraube..... | | | |
| 14 | 2 | 2 | | 9959-0825-16 | Screw | Schraube..... | | | |
| 15 | 1 | 1 | | 9739-0831-22 | Nut..... | Mutter | | | |
| 16 | 3 | 3 | | 9739-0831-22 | Nut..... | Mutter | | | |



| Issue Ausgabe 2008-21 | | Picture No Bild Nr M179 | | 2105M- 2125H LIFTING DEVICE | | 2105M- 2125H GERÄTHEBER | | Page Seite 32 | |
|-----------------------------|-----------------|-------------------------------|--|--------------------------------|-------------------------|----------------------------|----------------------|---------------------|--------------------|
| Fig. Pos. | Quantity/Anzahl | | | | Part No. Artikel Nr. | Description | Bezeichnung | Kit Satz | Notes Anmerkung |
| | 2715 | | | | | | | | |
| 1 | 1 | | | | 1134-4117-01 | Bracket | Halterung | | Pos 9 - 15 incl. |
| 2 | 2 | | | | 9959-1025-16 | Screw | Schraube..... | | |
| 3 | 2 | | | | 9739-1031-22 | Nut..... | Mutter | | |
| 4 | 2 | | | | 1134-2684-01 | Bearing..... | Lager..... | | |
| 5 | 1 | | | | 1134-4945-01 | Lift catch assy | Hebesperre Kpl | | |
| 9 | 1 | | | | 9404-0027-01 | • O-ring..... | • O-ring | | |
| 10 | 1 | | | | 9650-0039-04 | • Lock ring | • Schließring | | |
| 11 | 1 | | | | 9595-0276-01 | • Locating pin..... | • Spannstift..... | | |
| 12 | 1 | | | | 9997-0640-12 | • Screw | • Schraube..... | | |
| 13 | 1 | | | | 9747-0631-02 | • Lock nut..... | • Mutter | | |
| 15 | 1 | | | | 9897-0820-16 | • Screw | • Schraube..... | | |
| 16 | 1 | | | | 9747-0831-02 | Lock nut | Mutter | | |
| 17 | 1 | | | | 1134-4860-01 | Lift fork..... | Hebegabel | | |
| 18 | 2 | | | | 1134-0240-00 | Shoulder screw..... | Ansatzbolzen | | |
| 19 | 1 | | | | 1134-4938-01 | Lift pedal..... | Hebepedal | | |
| 20 | 2 | | | | 9997-0625-16 | Screw | Schraube..... | | |
| 21 | 2 | | | | 9739-0631-22 | Nut..... | Mutter | | |
| 22 | 1 | | | | 4231-0013-00 | Spring..... | Feder | | |

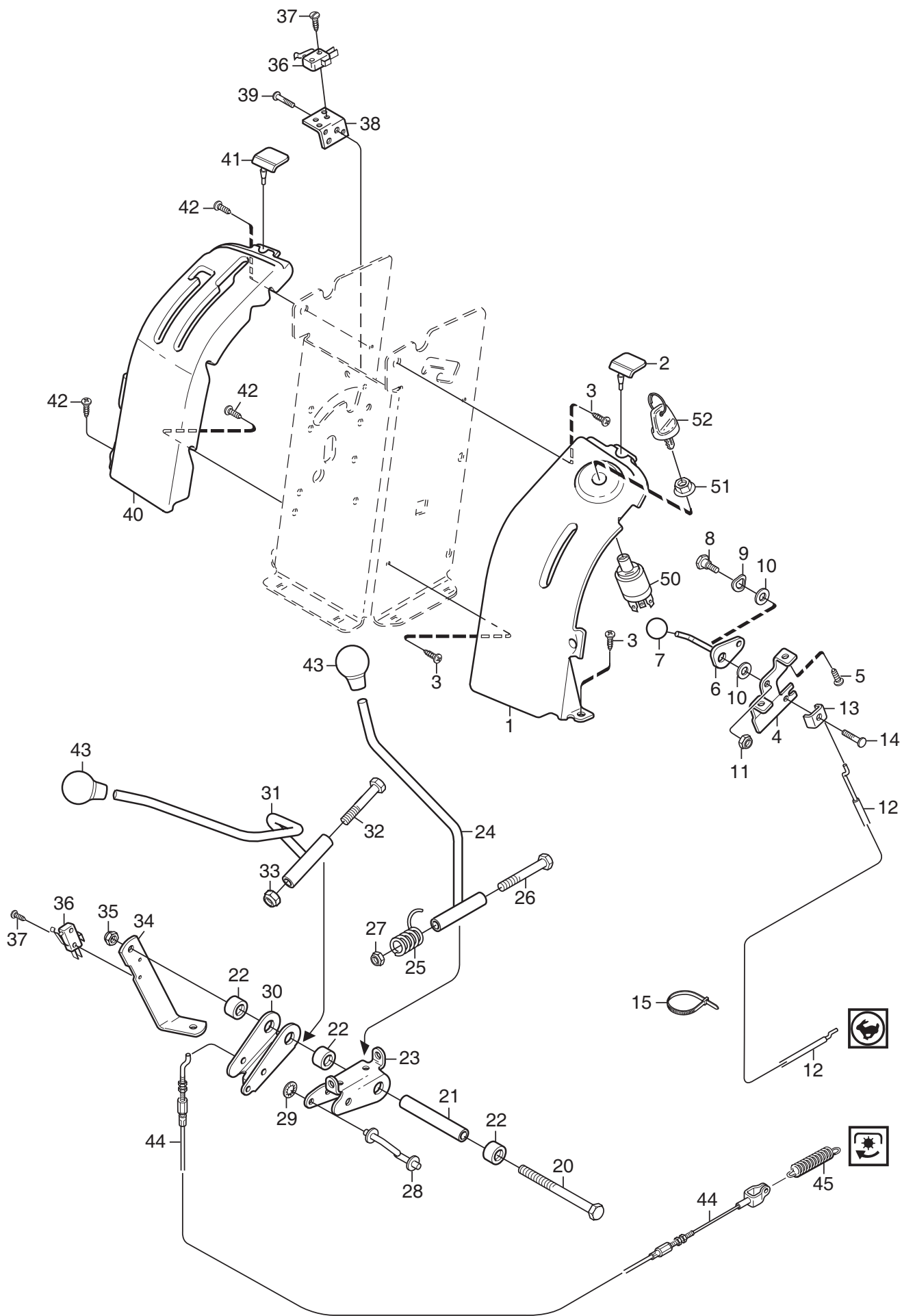


| Issue Ausgabe 2008-21 | | Picture No Bild Nr M180 | | 2105M- 2125H SEAT | | 2105M- 2125H SITZ | | Page Seite 34 | |
|-----------------------------|-----------------|-------------------------------|--|----------------------|-------------------------|-------------------------|----------------------------|---------------------|--------------------|
| Fig. Pos. | Quantity/Anzahl | | | | Part No. Artikel Nr. | Description | Bezeichnung | Kit Satz | Notes Anmerkung |
| | 2715 | 2716 | | | | | | | |
| 1 | 1 | 1 | | | 1134-5506-02 | Seat | Sitz | | |
| 3 | 1 | 1 | | | 1134-5301-01 | Seat plate | Sitzplatte | | |
| 4 | 2 | 2 | | | 1134-0240-00 | Shoulder screw | Ansatzbolzen | | |
| 5 | 2 | 2 | | | 9747-0831-02 | Lock nut | Mutter | | |
| 6 | 1 | 1 | | | 1134-5454-01 | Catch | Sperre | | |
| 7 | 1 | 1 | | | 9675-0012-02 | Locking washer | Verriegelungsscheibe | | |
| 12 | 1 | 1 | | | 1134-5296-06 | Seat bracket- red | Sitzkonsole- rot | | |
| 13 | 1 | 1 | | | 1134-4256-01 | Seat spring | Sitzfeder | | |
| 14 | 1 | 1 | | | 9924-1235-19 | Screw | Schraube | | |
| 15 | 1 | 1 | | | 9747-1231-02 | Lock nut | Mutter | | |
| 16 | 1 | 1 | | | 9997-0840-16 | Screw | Schraube | | |
| 17 | 1 | 1 | | | 1134-1565-06 | Spacer | Distanz | | |
| 18 | 1 | 1 | | | 1134-5302-01 | Spring | Feder | | |
| 19 | 1 | 1 | | | 1134-5299-01 | Push plate | Druckplatte | | |
| 20 | 1 | 1 | | | 9699-0090-02 | Flat washer | Scheibe | | |
| 21 | 1 | 1 | | | 9747-0831-02 | Lock nut | Mutter | | |
| 22 | 1 | 1 | | | 1134-3156-02 | Switch (grey) | Schalter (grau) | | |
| 28 | 4 | 3 | | | 9959-0820-16 | Screw | Schraube | | L = 20 mm |
| 29 | 2 | 1 | | | 9959-0825-16 | Screw | Schraube | | L = 25 mm |
| 30 | 2 | | | | 9699-0056-02 | Flat washer | Scheibe | | |
| 31 | 6 | 4 | | | 9739-0831-22 | Nut | Mutter | | |
| 32 | | 2 | | | 9897-0820-16 | Screw | Schraube | | |
| 33 | | 2 | | | 9757-0821-02 | Cap nut | Mutter | | |
| 34 | | 2 | | | 9699-0090-02 | Flat washer | Scheibe | | |

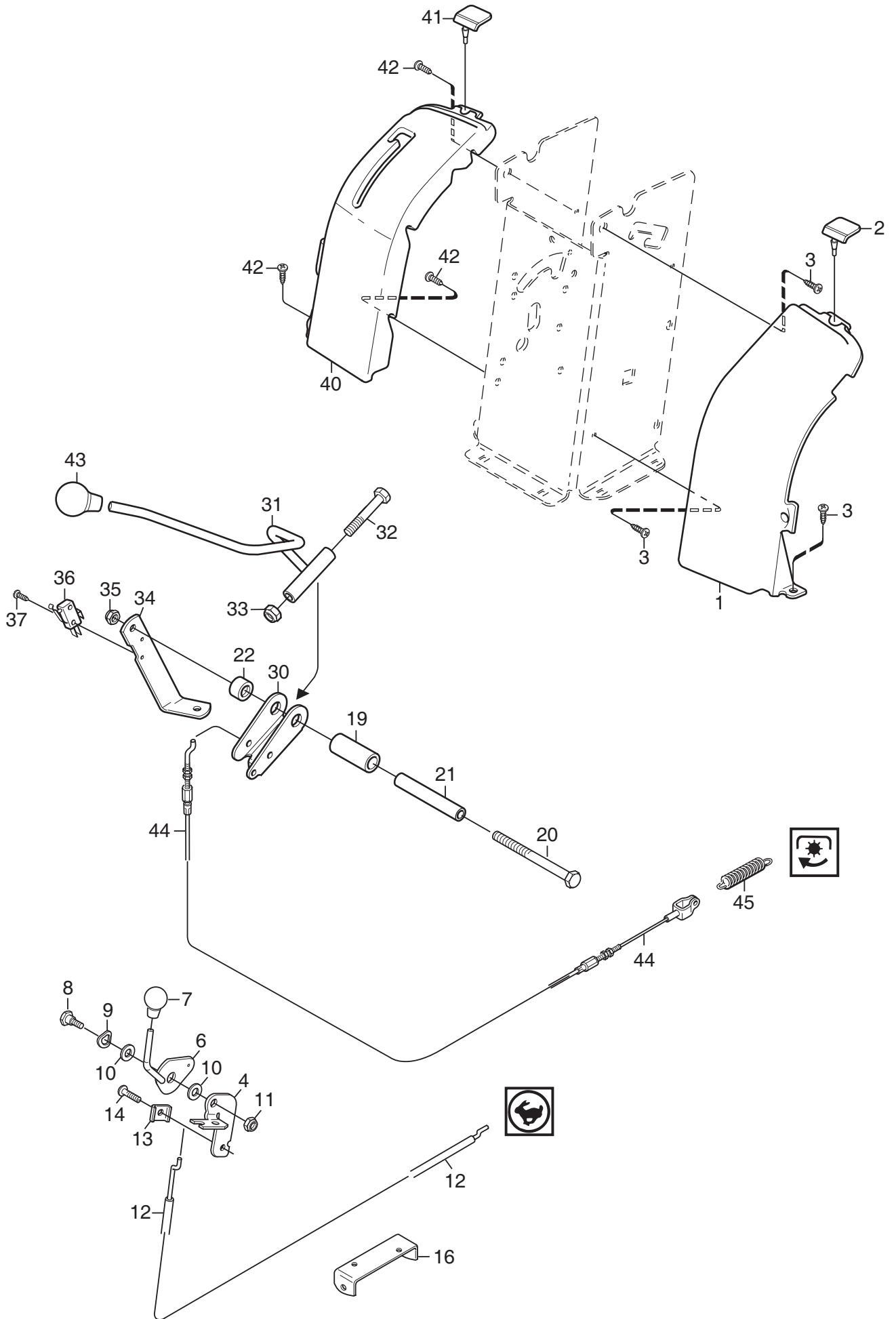


M181

| Issue Ausgabe 2008-21 | | Picture No Bild Nr M181 | | 2105M- 2125H STEERING | | 2105M- 2125H LENKUNG | | Page Seite 36 | |
|-----------------------------|-----------------|-------------------------------|--|--------------------------|-------------------------|------------------------------|---------------------------|---------------------|--------------------|
| Fig. Pos. | Quantity/Anzahl | | | | Part No. Artikel Nr. | Description | Bezeichnung | Kit Satz | Notes Anmerkung |
| | 2715 | | | | | | | | |
| X | 1 | 3 | | | 1134-0041-01 | Bushing | Hülse..... | | |
| X | 2 | 3 | | | 1134-0046-00 | Wire clamp | Drahthalter | | |
| | 3 | 3 | | | 1134-0072-02 | Steering pulley..... | Seilrolle | | |
| | 4 | 3 | | | 9997-1040-16 | Screw | Schraube..... | | |
| | 5 | 2 | | | 9739-1031-22 | Nut..... | Mutter | | |
| | 6 | 1 | | | 1134-2032-04 | Steering cable..... | Lenkdrahtseil | | |
| | 7 | 1 | | | 1134-1310-01 | Compression spring | Druckfeder | | |
| | 8 | 1 | | | 9699-0056-02 | Flat washer | Scheibe | | |
| | 9 | 1 | | | 9747-0831-02 | Lock nut | Mutter | | |
| | 10 | 1 | | | 9959-0820-16 | Screw | Schraube..... | | |
| | 11 | 1 | | | 1134-5349-04 | Steering console- bl..... | Lenkkonsole- schwarz..... | | |
| | 12 | 4 | | | 9897-0820-16 | Screw | Schraube..... | | |
| | 13 | 4 | | | 9739-0831-22 | Nut..... | Mutter | | |
| | 15 | 1 | | | 1134-1305-05 | Steering column- lower | Lenkrohr- untere | | |
| | 16 | 2 | | | 1134-1901-01 | Bearing | Lager | | |
| | 17 | 2 | | | 9893-0616-16 | Screw | Schraube..... | | |
| | 18 | 2 | | | 9699-0060-02 | Flat washer | Scheibe | | |
| | 19 | 1 | | | 1134-5495-01 | Steering rod..... | Lenkstange..... | | |
| | 20 | 1 | | | 1134-1933-01 | Steering pulley..... | Lenkrolle | | |
| | 21 | 1 | | | 9595-0262-00 | Locating pin..... | Spannstift..... | | |
| | 22 | 1 | | | 1134-5496-01 | Steering wheel..... | Lenkrad | | |
| | 32 | 1 | | | 1134-3047-01 | Spacer | Distanz | | |
| | 33 | 2 | | | 9699-0104-02 | Washer | Scheibe | | |
| | 36 | 2 | | | 1134-3047-01 | Spacer | Distanz | | |
| X | 37 | 1 | | | 1134-0041-05 | Bushing | Hülse..... | | |
| X | 38 | 1 | | | 1134-0046-00 | Wire clamp | Drahthalter | | |
| | 39 | 1 | | | 1134-0072-02 | Steering pulley..... | Seilrolle | | |
| | 40 | 1 | | | 9997-1060-12 | Screw | Schraube..... | | |

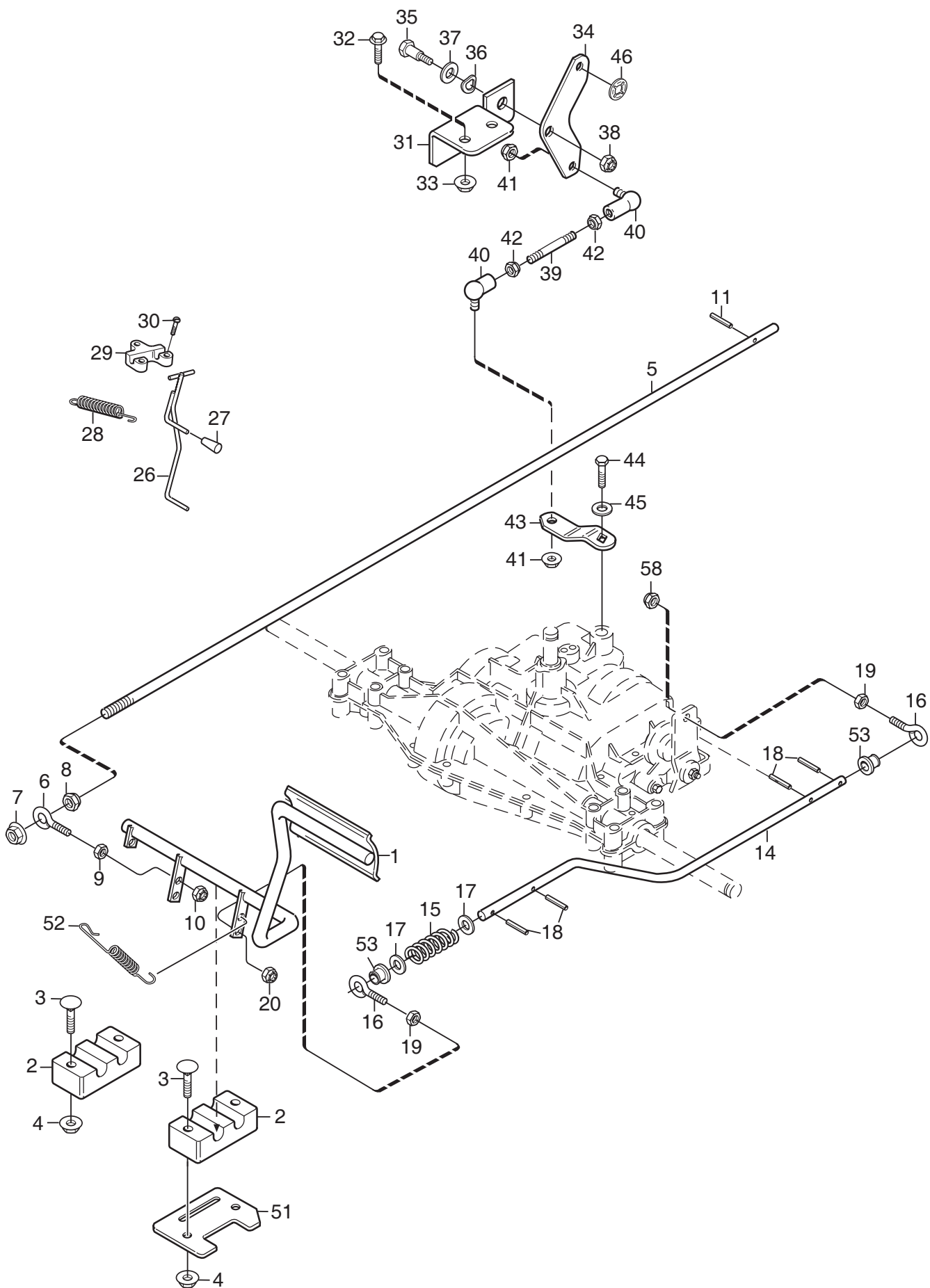


| Issue Ausgabe 2008-21 | | Picture No Bild Nr M182 | | 2105M HAND CONTROLS | | 2105M HANDREGULIERUNG | | Page Seite 38 | |
|-----------------------------|-----------------|-------------------------------|--|------------------------|-------------------------|--------------------------|---------------------------|---------------------|--------------------|
| Fig. Pos. | Quantity/Anzahl | | | | Part No. Artikel Nr. | Description | Bezeichnung | Kit Satz | Notes Anmerkung |
| | 2715 | | | | | | | | |
| 1 | 1 | | | | 1134-5286-02 | Control panel- LH..... | Regulierpanel- L..... | | |
| 2 | 2 | | | | 1134-5531-01 | Absorber..... | Dämpfer..... | | |
| 3 | 3 | | | | 9893-0616-16 | Screw..... | Schraube..... | | |
| 4 | 1 | | | | 1134-5357-01 | Bracket..... | Halterung..... | | |
| 5 | 2 | | | | 9838-9516-12 | Screw..... | Schraube..... | | |
| 6 | 1 | | | | 1134-4077-01 | Throttle control..... | Gasregulierung..... | | |
| 7 | 1 | | | | 1134-4078-01 | Knob..... | Knopf..... | | |
| 8 | 1 | | | | 1134-0240-00 | Shoulder screw..... | Ansatzbolzen..... | | |
| 9 | 1 | | | | 9694-0001-00 | Washer..... | Scheibe..... | | |
| 10 | 2 | | | | 1134-4242-01 | Spacer washer..... | Distanzscheibe..... | | |
| 11 | 1 | | | | 9747-0831-02 | Lock nut..... | Mutter..... | | |
| 12 | 1 | | | | 1134-1597-13 | Throttle cable..... | Gasdraht..... | | |
| 13 | 1 | | | | 9500-9991-00 | Cable clamp..... | Drahtklemme..... | | |
| 14 | 1 | | | | 9943-0516-16 | Screw..... | Schraube..... | | |
| 15 | 1 | | | | 9579-0003-00 | Cable holder..... | Kabelhalter..... | | |
| 20 | 1 | | | | 9997-0812-02 | Screw..... | Schraube..... | | |
| 21 | 1 | | | | 1134-5274-02 | Spacer..... | Distanz..... | | |
| 22 | 3 | | | | 1134-3047-01 | Spacer..... | Distanz..... | | |
| 23 | 1 | | | | 1134-5271-01 | Control bracket..... | Regulierhalterung..... | | |
| 24 | 1 | | | | 1134-5275-01 | Gear shift lever..... | Schalthebel..... | | |
| 25 | 1 | | | | 1134-5535-01 | Spring..... | Feder..... | | |
| 26 | 1 | | | | 9997-0890-12 | Screw..... | Schraube..... | | |
| 27 | 1 | | | | 9747-0831-02 | Lock nut..... | Mutter..... | | |
| 28 | 1 | | | | 1134-5268-01 | Shifter rod..... | Schaltstange..... | | |
| 29 | 1 | | | | 9675-0009-02 | Starlock..... | Verriegelungsscheibe..... | | |
| 30 | 1 | | | | 1134-5271-01 | Control bracket..... | Regulierhalterung..... | | |
| 31 | 1 | | | | 1134-5276-01 | Control lever..... | Regulierhebel..... | | |
| 32 | 1 | | | | 9997-0890-12 | Screw..... | Schraube..... | | |
| 33 | 1 | | | | 9747-0831-02 | Lock nut..... | Mutter..... | | |
| 34 | 1 | | | | 1134-5356-01 | Strut..... | Strebe..... | | |
| 35 | 1 | | | | 9747-0831-02 | Lock nut..... | Mutter..... | | |
| 36 | 2 | | | | 9400-0312-01 | Micro switch..... | Schalter..... | | |
| 37 | 4 | | | | 9840-7716-16 | Screw..... | Schraube..... | | |
| 38 | 1 | | | | 1134-5358-01 | Switch bracket..... | Schalthalterung..... | | |
| 39 | 2 | | | | 9943-0516-16 | Screw..... | Schraube..... | | |
| 40 | 1 | | | | 1134-5285-03 | Control panel- RH..... | Regulierpanel- R..... | | |
| 41 | 2 | | | | 1134-5531-01 | Absorber..... | Dämpfer..... | | |
| 42 | 4 | | | | 9893-0616-16 | Screw..... | Schraube..... | | |
| 43 | 2 | | | | 1134-2551-01 | Knob..... | Knopf..... | | |
| 44 | 1 | | | | 1134-3573-06 | PTO cable..... | Nebenantriebsdraht..... | | |
| 45 | 1 | | | | 1134-1242-02 | Spring..... | Feder..... | | |
| 50 | 1 | | | | 1134-4093-01 | Ignition switch..... | Zündschloß..... | | |
| 51 | 1 | | | | 1134-4749-01 | Nut..... | Mutter..... | | |
| 52 | 1 | | | | 1134-4734-01 | Ignition key..... | Zündschlüssel..... | | |



M183A

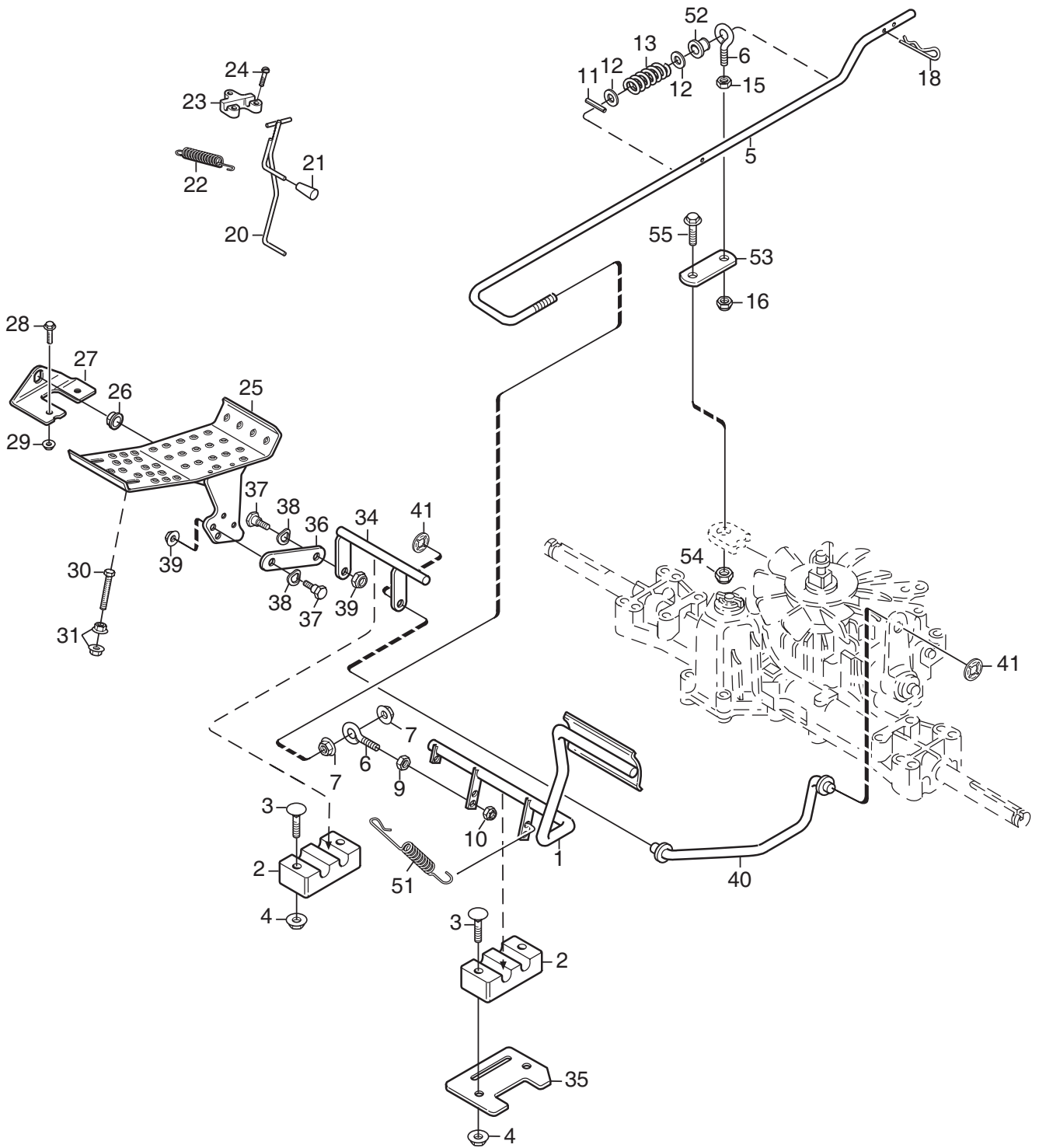
| Issue Ausgabe 2008-21 | | Picture No Bild Nr M183A | | 2125H HAND CONTROLS | | 2125H HANDREGULIERUNG | | Page Seite 40 | |
|-----------------------------|-----------------|--------------------------------|--|------------------------|-------------------------|--------------------------|-------------------------|---------------------|--------------------|
| Fig. Pos. | Quantity/Anzahl | | | | Part No. Artikel Nr. | Description | Bezeichnung | Kit Satz | Notes Anmerkung |
| | 2716 | | | | | | | | |
| 1 | 1 | | | | 1134-5286-05 | Control panel- LH..... | Regulierpanel- L..... | | |
| 2 | 2 | | | | 1134-5531-01 | Absorber..... | Dämpfer..... | | |
| 3 | 3 | | | | 9893-0616-16 | Screw..... | Schraube..... | | |
| 4 | 1 | | | | 1134-5464-01 | Bracket..... | Halterung..... | | |
| 6 | 1 | | | | 1134-5465-01 | Throttle lever..... | Gasregulierung..... | | |
| 7 | 1 | | | | 1134-4078-01 | Knob..... | Knopf..... | | |
| 8 | 1 | | | | 1134-0240-00 | Shoulder screw..... | Ansatzbolzen..... | | |
| 9 | 1 | | | | 9694-0001-00 | Washer..... | Scheibe..... | | |
| 10 | 2 | | | | 1134-4242-01 | Spacer washer..... | Distanzscheibe..... | | |
| 11 | 1 | | | | 9747-0831-02 | Lock nut..... | Mutter..... | | |
| 12 | 1 | | | | 1134-4197-03 | Throttle cable..... | Gasdraht..... | | |
| 13 | 1 | | | | 9500-9991-00 | Cable clamp..... | Drahtklemme..... | | |
| 14 | 1 | | | | 9943-0516-16 | Screw..... | Schraube..... | | |
| 16 | 1 | | | | 1134-6370-01 | Wire guide..... | Drahthalter..... | | |
| 19 | 1 | | | | 1134-5508-01 | Control sleeve..... | Regulierhülse..... | | |
| 20 | 1 | | | | 9997-0812-02 | Screw..... | Schraube..... | | |
| 21 | 1 | | | | 1134-5274-02 | Spacer..... | Distanz..... | | |
| 22 | 1 | | | | 1134-3047-01 | Spacer..... | Distanz..... | | |
| 30 | 1 | | | | 1134-5271-01 | Control bracket..... | Regulierhalterung..... | | |
| 31 | 1 | | | | 1134-5276-01 | Control lever..... | Regulierhebel..... | | |
| 32 | 1 | | | | 9997-0890-12 | Screw..... | Schraube..... | | |
| 33 | 1 | | | | 9747-0831-02 | Lock nut..... | Mutter..... | | |
| 34 | 1 | | | | 1134-5356-01 | Strut..... | Strebe..... | | |
| 35 | 1 | | | | 9747-0831-02 | Lock nut..... | Mutter..... | | |
| 36 | 1 | | | | 9400-0312-01 | Micro switch..... | Schalter..... | | |
| 37 | 2 | | | | 9840-7716-16 | Screw..... | Schraube..... | | |
| 40 | 1 | | | | 1134-5285-04 | Control panel- RH..... | Regulierpanel- R..... | | |
| 41 | 2 | | | | 1134-5531-01 | Absorber..... | Dämpfer..... | | |
| 42 | 4 | | | | 9893-0616-16 | Screw..... | Schraube..... | | |
| 43 | 1 | | | | 1134-2551-01 | Knob..... | Knopf..... | | |
| 44 | 1 | | | | 1134-3573-06 | PTO cable..... | Nebenantriebsdraht..... | | |
| 45 | 1 | | | | 1134-1242-02 | Spring..... | Feder..... | | |



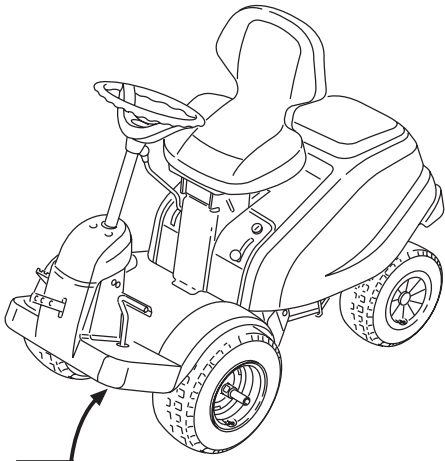
M184B

| Issue Ausgabe 2008-21 | | Picture No Bild Nr M184B | | 2105M FOOT CONTROLS | | 2105M FÜßREGULIERUNG | | Page Seite 42 | |
|-----------------------------|-----------------|--------------------------------|--|------------------------|-------------------------|----------------------------|----------------------------|---------------------|--------------------|
| Fig. Pos. | Quantity/Anzahl | | | | Part No. Artikel Nr. | Description | Bezeichnung | Kit Satz | Notes Anmerkung |
| | 2715 | | | | | | | | |
| 1 | 1 | | | | 1134-4802-01 | Pedal | Pedal | | |
| 2 | 2 | | | | 1134-4624-01 | Bearing | Lager | | |
| 3 | 4 | | | | 9897-0640-12 | Screw | Schraube | | |
| 4 | 4 | | | | 9739-0631-22 | Nut | Mutter | | |
| 5 | 1 | | | | 1134-4795-01 | Clutch rod | Kupplungsstange | | |
| 6 | 1 | | | | 1134-2138-01 | Eye bolt | Schrauböse | | |
| 7 | 1 | | | | 9739-1031-22 | Nut | Mutter | | |
| 8 | 1 | | | | 9731-1031-22 | Nut | Mutter | | |
| 9 | 1 | | | | 9739-0831-22 | Nut | Mutter | | |
| 10 | 1 | | | | 9747-0831-02 | Lock nut | Mutter | | |
| 11 | 1 | | | | 9595-0208-00 | Locating pin | Spannstift | | |
| 14 | 1 | | | | 1134-4777-01 | Brake rod | Bremsstange | | |
| 15 | 1 | | | | 1134-4617-01 | Spring | Feder | | |
| 16 | 2 | | | | 1134-2138-01 | Eye bolt | Schrauböse | | |
| 17 | 2 | | | | 9699-0035-02 | Flat washer | Scheibe | | |
| 18 | 4 | | | | 9595-0208-00 | Locating pin | Spannstift | | |
| 19 | 2 | | | | 9739-0831-22 | Nut | Mutter | | |
| 20 | 1 | | | | 9747-0831-02 | Lock nut | Mutter | | |
| 26 | 1 | | | | 1134-5353-01 | Brake rod | Bremsstange | | |
| 27 | 1 | | | | 1134-2786-01 | Plastic knob | Plastikknopf | | |
| 28 | 1 | | | | 1131-1497-01 | Spring | Feder | | |
| 29 | 1 | | | | 1134-4002-01 | Brake rod attachment | Halterung | | |
| 30 | 3 | | | | 9838-9516-12 | Screw | Schraube | | |
| 31 | 1 | | | | 1134-4714-01 | Angle bracket | Winkelhalterung | | |
| 32 | 2 | | | | 9959-0820-16 | Screw | Schraube | | |
| 33 | 2 | | | | 9739-0831-22 | Nut | Mutter | | |
| 34 | 1 | | | | 1134-4715-01 | Triangular plate | Dreieckenblech | | |
| 35 | 1 | | | | 1134-0240-00 | Shoulder screw | Ansatzbolzen | | |
| 36 | 1 | | | | 9694-0001-00 | Washer | Scheibe | | |
| 37 | 1 | | | | 9699-0036-02 | Flat washer | Scheibe | | |
| 38 | 1 | | | | 9747-0831-02 | Lock nut | Mutter | | |
| 39 | 1 | | | | 1134-4717-02 | Threaded rod | Gewindestange | | |
| 40 | 2 | | | | 9570-0004-00 | Elbow link | Winkelgelenk | | |
| 41 | 2 | | | | 9747-0631-02 | Lock nut | Mutter | | |
| 42 | 2 | | | | 9739-0631-22 | Nut | Mutter | | |
| 43 | 1 | | | | 1134-5279-01 | Shift lever | Schaltarm | | |
| 43 | 1 | | | | 1134-6351-01 | Shift lever | Schaltarm | | |
| 44 | 1 | | | | 9987-5016-16 | Screw | Schraube | | |
| 45 | 1 | | | | 9699-0060-02 | Flat washer | Scheibe | | |
| 46 | 1 | | | | 9675-0009-02 | Starlock | Verriegelungsscheibe | | |
| 51 | 1 | | | | 1134-4793-01 | Stop plate | Halteblech | | |
| 52 | 1 | | | | 4231-0013-00 | Spring | Feder | | |
| 53 | 2 | | | | 1134-4779-01 | Plastic bushing | Plastikbuchse | | |
| 58 | 1 | | | | 9747-0831-02 | Lock nut | Mutter | | |

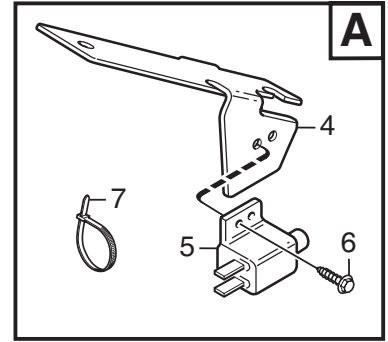
Dana 4360-197
Dana 6800-7



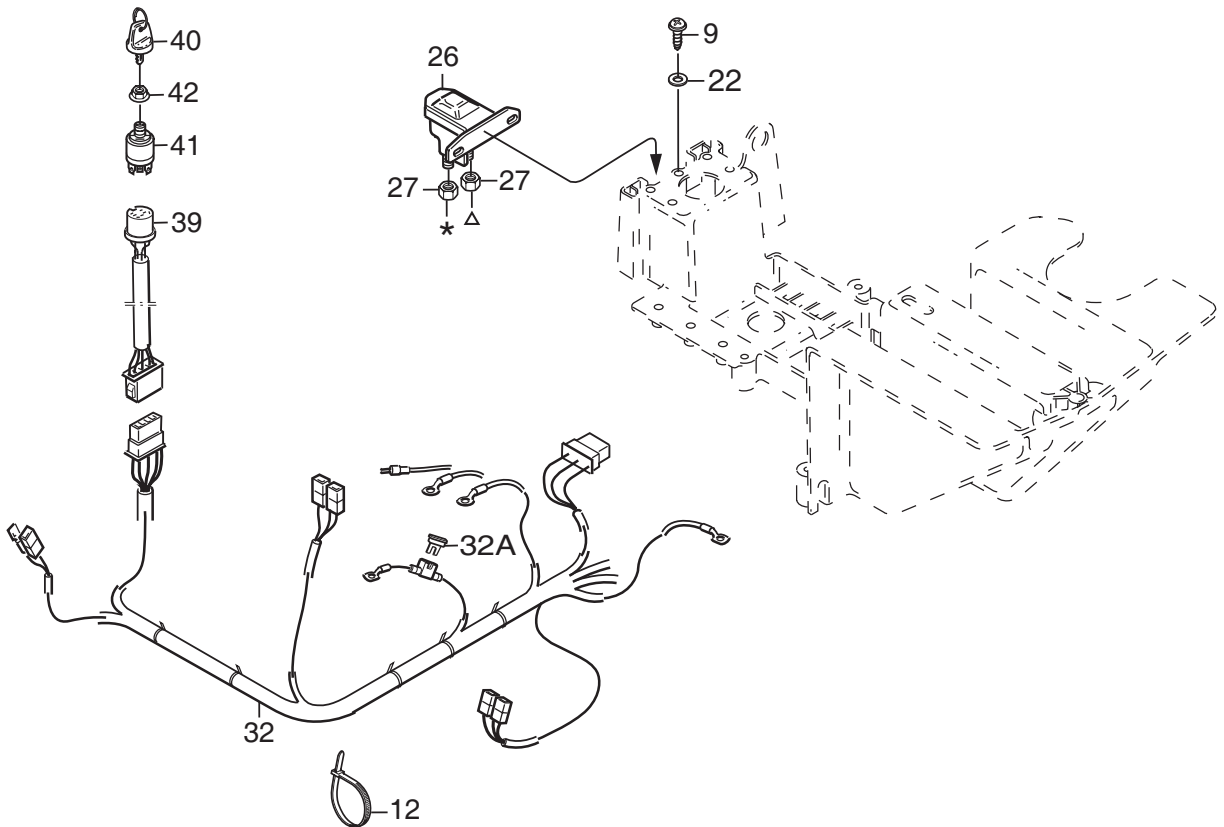
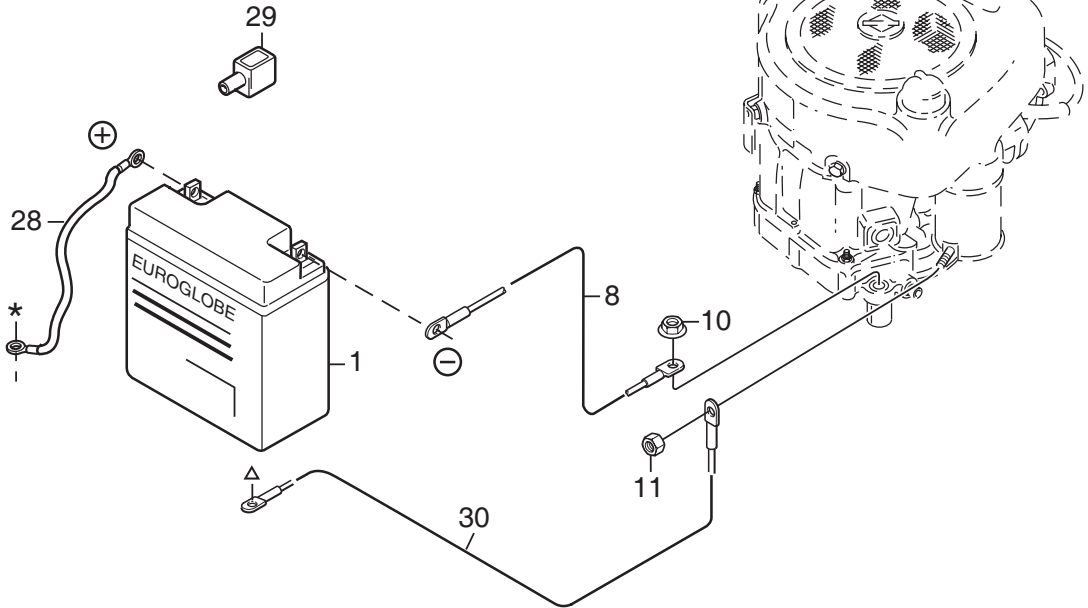
| Issue Ausgabe 2008-21 | | Picture No Bild Nr M185B | | 2125H FOOT CONTROLS | | 2125H FUßREGULIERUNG | | Page Seite 44 | |
|-----------------------------|-----------------|--------------------------------|--|------------------------|---|----------------------------|-------------|---------------------|--------------------|
| Fig. Pos. | Quantity/Anzahl | | | | Part No. Artikel Nr. | Description | Bezeichnung | Kit Satz | Notes Anmerkung |
| | 2716 | | | | | | | | |
| 1 | 1 | | | | 1134-4802-01 Pedal | Pedal | | | |
| 2 | 2 | | | | 1134-4624-01 Bearing | Lager | | | |
| 3 | 4 | | | | 9897-0640-12 Screw | Schraube | | | |
| 4 | 4 | | | | 9739-0631-22 Nut | Mutter | | | |
| 5 | 1 | | | | 1134-4949-01 Clutch rod | Kupplungsstange | | | |
| 6 | 2 | | | | 1134-2138-01 Eye bolt | Schrauböse | | | |
| 7 | 2 | | | | 9739-1031-22 Nut | Mutter | | | |
| 9 | 1 | | | | 9739-0831-22 Nut | Mutter | | | |
| 10 | 1 | | | | 9747-0831-02 Lock nut | Mutter | | | |
| 11 | 1 | | | | 9595-0208-00 Locating pin | Spannstift | | | |
| 12 | 2 | | | | 9699-0035-02 Flat washer | Scheibe | | | |
| 13 | 1 | | | | 1134-4617-01 Spring | Feder | | | |
| 15 | 1 | | | | 9739-0831-22 Nut | Mutter | | | |
| 16 | 1 | | | | 9747-0831-02 Lock nut | Mutter | | | |
| 18 | 1 | | | | 9598-0002-02 Pin lock | Schließnadel | | | |
| 20 | 1 | | | | 1134-5353-01 Brake rod | Bremsstange | | | |
| 21 | 1 | | | | 1134-2786-01 Plastic knob | Plastikknopf | | | |
| 22 | 1 | | | | 1131-1497-01 Spring | Feder | | | |
| 23 | 1 | | | | 1134-4002-01 Brake rod attachment | Halterung | | | |
| 24 | 3 | | | | 9838-9516-12 Screw | Schraube | | | |
| 25 | 1 | | | | 1134-6353-01 Drive pedal | Fahrpedal | | | |
| 26 | 2 | | | | 1134-6313-01 Bearing | Lager | | | |
| 27 | 2 | | | | 1134-2700-01 Bracket | Halter | | | |
| 28 | 2 | | | | 9959-0820-16 Screw | Schraube | | | |
| 29 | 2 | | | | 9739-0831-22 Nut | Mutter | | | |
| 30 | 1 | | | | 9997-0870-16 Screw | Schraube | | | |
| 31 | 2 | | | | 9739-0831-22 Nut | Mutter | | | |
| 34 | 1 | | | | 1134-4440-01 Shaft | Achse | | | |
| 35 | 1 | | | | 1134-4793-01 Stop plate | Halteblech | | | |
| 36 | 1 | | | | 1134-4441-01 Link | Gelenk | | | |
| 37 | 2 | | | | 1134-0240-00 Shoulder screw | Ansatzbolzen | | | |
| 38 | 2 | | | | 9694-0001-00 Washer | Scheibe | | | |
| 39 | 2 | | | | 9747-0831-02 Lock nut | Mutter | | | |
| 40 | 1 | | | | 1134-5288-01 Control rod | Regulierstange | | | |
| 41 | 2 | | | | 9675-0012-02 Locking washer | Verriegelungsscheibe | | | |
| 51 | 1 | | | | 4231-0013-00 Spring | Feder | | | |
| 52 | 1 | | | | 1134-4779-01 Plastic bushing | Plastikbuchse | | | |
| 53 | 1 | | | | 1134-4972-01 Brake link | Bremsgelenk | | | |
| 54 | 1 | | | | 9747-0831-02 Lock nut | Mutter | | | |
| 55 | 1 | | | | 9997-0820-16 Screw | Schraube | | | |



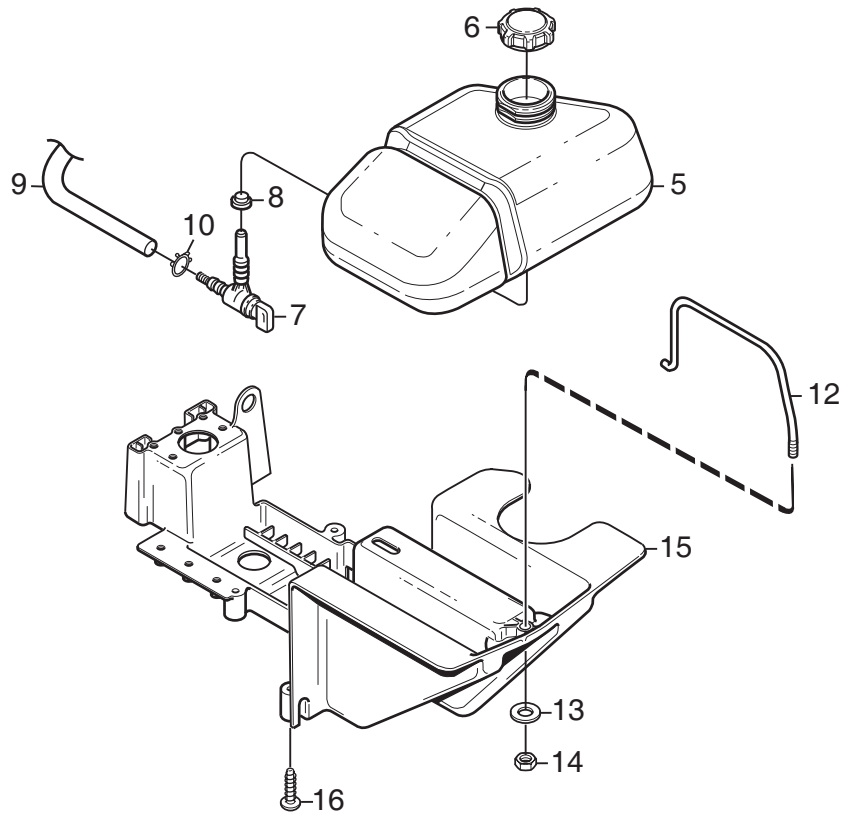
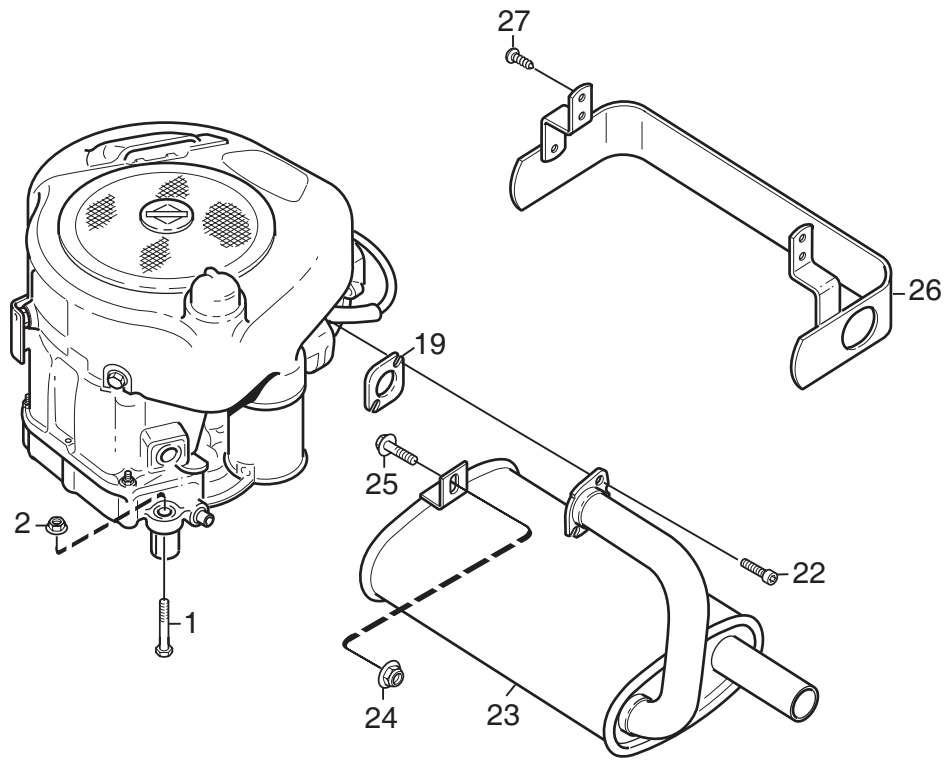
A



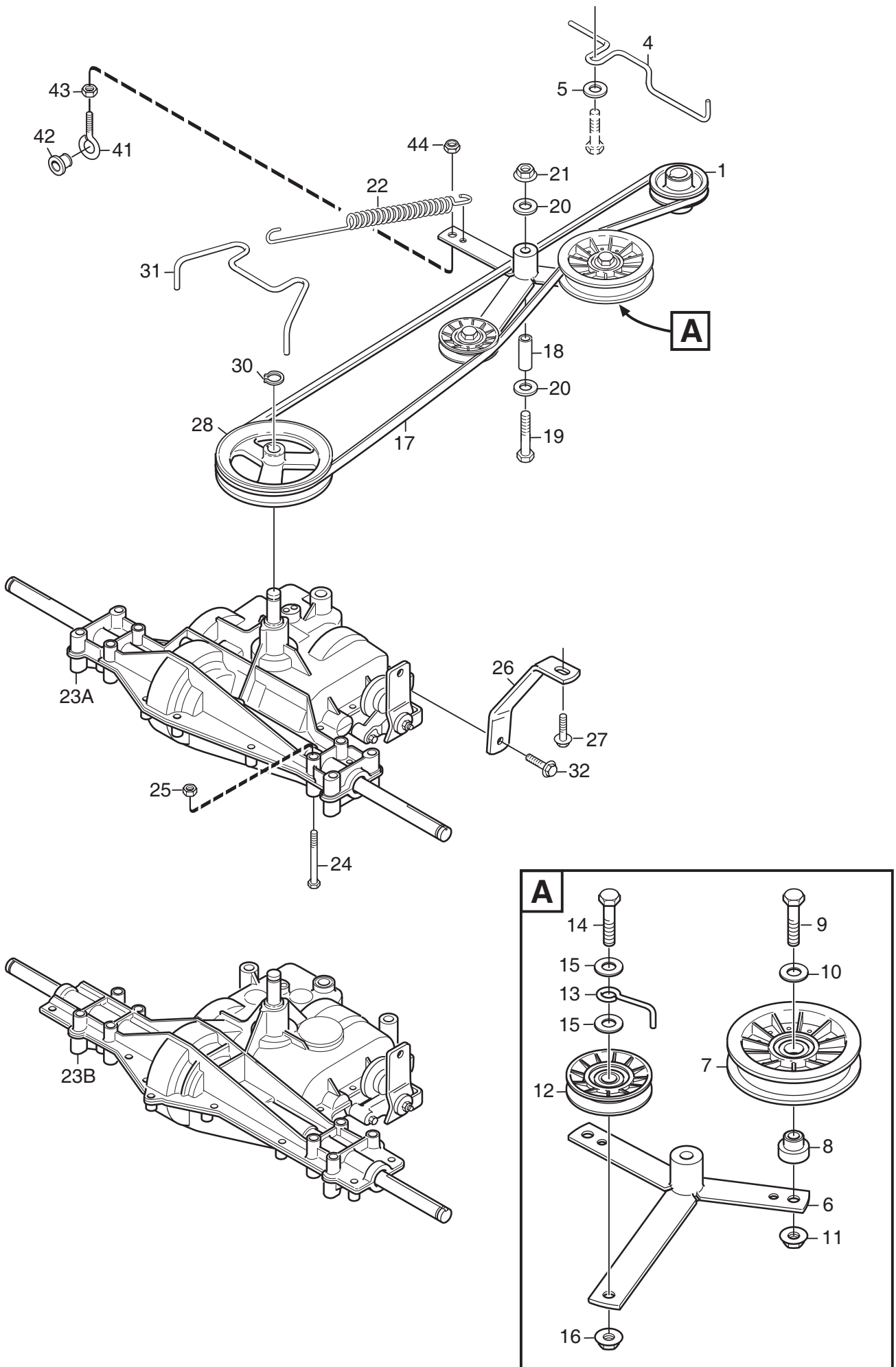
A



| Issue Ausgabe 2008-21 | | Picture No Bild Nr M186A | | 2105M- 2125H EL. EQUIPMENT | | 2105M- 2125H EL. AUSSTATTUNG | | Page Seite 46 | |
|-----------------------------|-----------------|--------------------------------|--|-------------------------------|-------------------------|---------------------------------|---------------------------|---------------------|--------------------|
| Fig. Pos. | Quantity/Anzahl | | | | Part No. Artikel Nr. | Description | Bezeichnung | Kit Satz | Notes Anmerkung |
| | 2715 | 2716 | | | | | | | |
| 1 | 1 | 1 | | | 1134-4804-01 | Battery | Batterie | | |
| 4 | | 1 | | | 1134-4610-01 | Switch bracket | Schalhalterung | | |
| 5 | | 1 | | | 1134-3399-02 | Switch | Schalter | | |
| 6 | | 2 | | | 9852-8013-16 | Screw | Schraube | | |
| 7 | | 3 | | | 9579-0003-00 | Cable holder | Kabelhalter | | |
| 8 | 1 | 1 | | | 1134-2042-02 | Cable- black | Kabel- schwarz | | L = 350 mm |
| 9 | 1 | 1 | | | 9838-9516-12 | Screw | Schraube | | |
| 10 | 1 | 1 | | | 9747-0831-02 | Lock nut | Mutter | | |
| 11 | 1 | 1 | | | 9795-3531-02 | Nut | Mutter | | 1/4 UNC |
| 12 | 3 | 3 | | | 9579-0003-00 | Cable holder | Kabelhalter | | |
| 22 | 1 | 1 | | | 9699-0060-02 | Flat washer | Scheibe | | |
| 26 | 1 | 1 | | | 1134-3901-01 | Solenoid | Magnetschalter | | |
| 27 | 2 | 2 | | | 9794-5131-02 | Nut | Mutter | | |
| 28 | 1 | 1 | | | 1134-0234-02 | Battery cable (+) | Batteriekabel (+) | | L = 395 mm |
| 29 | 1 | 1 | | | 1134-2310-01 | Guard cap | Schutzkappe | | |
| 30 | 1 | 1 | | | 1134-4702-02 | Cable- red | Kabel- rot | | L = 480 mm |
| 32 | | 1 | | | 1134-6308-01 | Harness | Kabelbündel | | |
| X 32 | 1 | | | | 1134-7218-01 | Harness | Kabelbündel | | |
| 32A | 1 | 1 | | | 1134-3496-06 | • Fuse | • Sicherung | | 20A |
| 39 | | 1 | | | 1134-6348-01 | Harness | Kabelbündel | | |
| 40 | | 1 | | | 1134-4734-01 | Ignition key | Zündschlüssel | | |
| 41 | | 1 | | | 1134-4093-01 | Ignition switch | Zündschloß | | |
| 42 | | 1 | | | 1134-4749-01 | Nut | Mutter | | |

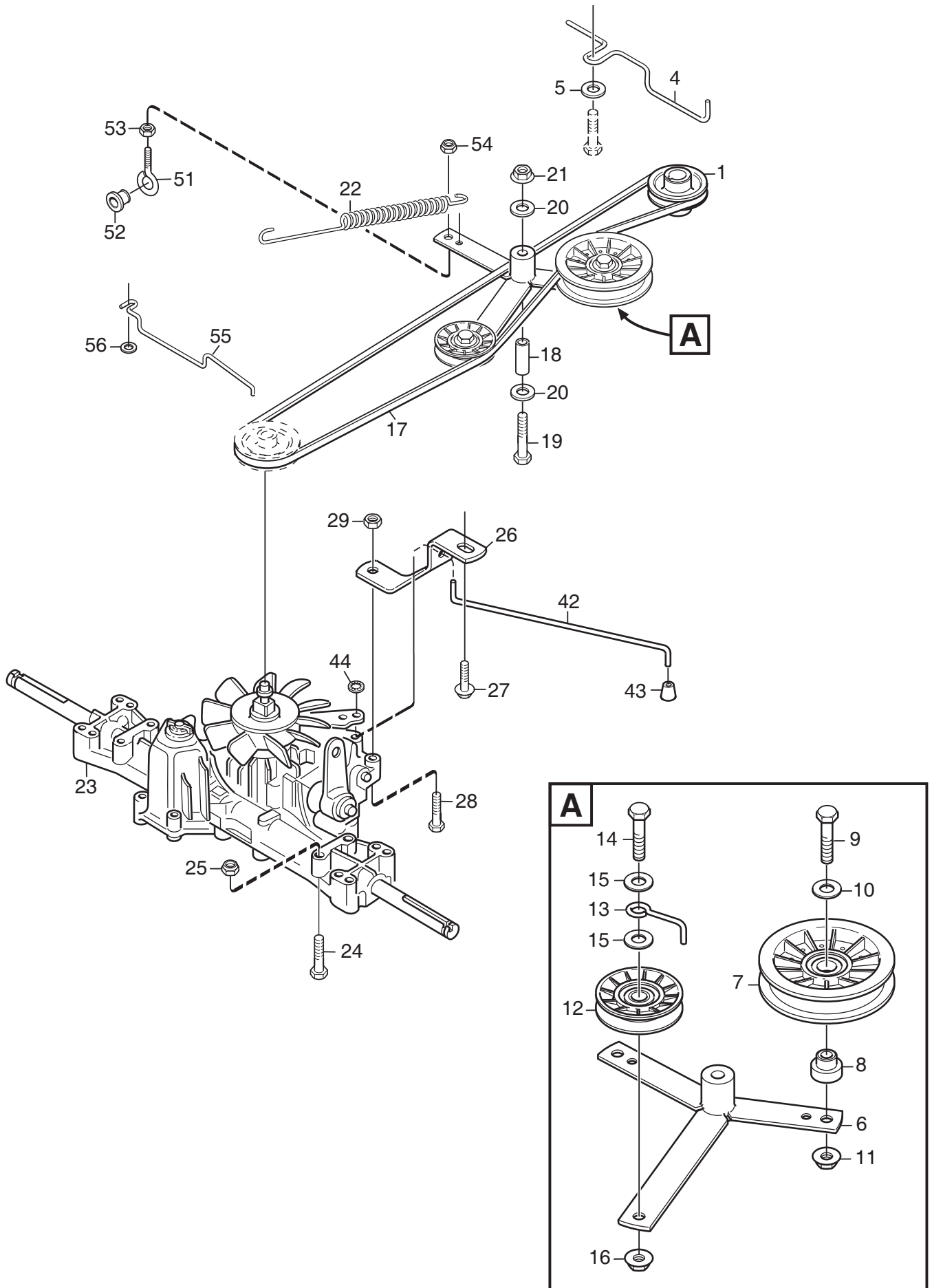


| Issue Ausgabe 2008-21 | | Picture No Bild Nr M187A | | 2105M- 2125H ENGINE | | 2105M- 2125H MOTOR | | Page Seite 48 | |
|-----------------------------|-----------------|--------------------------------|--|------------------------|-------------------------|--------------------------|-----------------------------|---------------------|--------------------|
| Fig. Pos. | Quantity/Anzahl | | | | Part No. Artikel Nr. | Description | Bezeichnung | Kit Satz | Notes Anmerkung |
| | 2715 | | | | | | | | |
| 1 | 4 | | | | 9997-0840-16 | Screw | Schraube..... | | L = 460 mm |
| 2 | 4 | | | | 9747-0831-02 | Lock nut | Mutter | | |
| 5 | 1 | | | | 1134-5266-01 | Fuel tank | Benzintank | | |
| 6 | 1 | | | | 1134-5532-01 | Fuel tank cap | Tankdeckel | | |
| 7 | 1 | | | | 1134-3224-01 | Fuel shut-off valve..... | Benzinhahn | | |
| 8 | 1 | | | | 1134-3225-01 | Grommet | Gummibuchse..... | | |
| 9 | 1 | | | | 1134-2975-05 | Fuel hose | Benzinschlauch | | |
| 10 | 2 | | | | 9578-0023-02 | Hose clamp..... | Schlauchklemme..... | | |
| 12 | 1 | | | | 1134-4808-01 | Tank clamp | Tankbügel..... | | |
| 13 | 1 | | | | 9699-0060-02 | Flat washer | Scheibe | | |
| 14 | 1 | | | | 9747-0631-02 | Lock nut | Mutter | | |
| 15 | 1 | | | | 1134-4807-02 | Tank/battery shelf | Tank/Batterieregal | | |
| 16 | 4 | | | | 9829-8830-12 | Screw | Schraube..... | | |
| 19 | 1 | | | | 1134-0433-00 | Muffler gasket..... | Schalldämpferdichtung | | |
| 22 | 2 | | | | 1134-4930-01 | Screw | Schraube..... | | |
| 23 | 1 | | | | 1134-5455-01 | Muffler..... | Schalldämpfer..... | | |
| 24 | 1 | | | | 9739-0831-22 | Nut..... | Mutter | | |
| 25 | 1 | | | | 9959-0820-16 | Screw | Schraube..... | | |
| 26 | 1 | | | | 1134-5457-01 | Heat guard..... | Wärmeschutz | | |
| 27 | 4 | | | | 9893-0616-16 | Screw | Schraube..... | | |



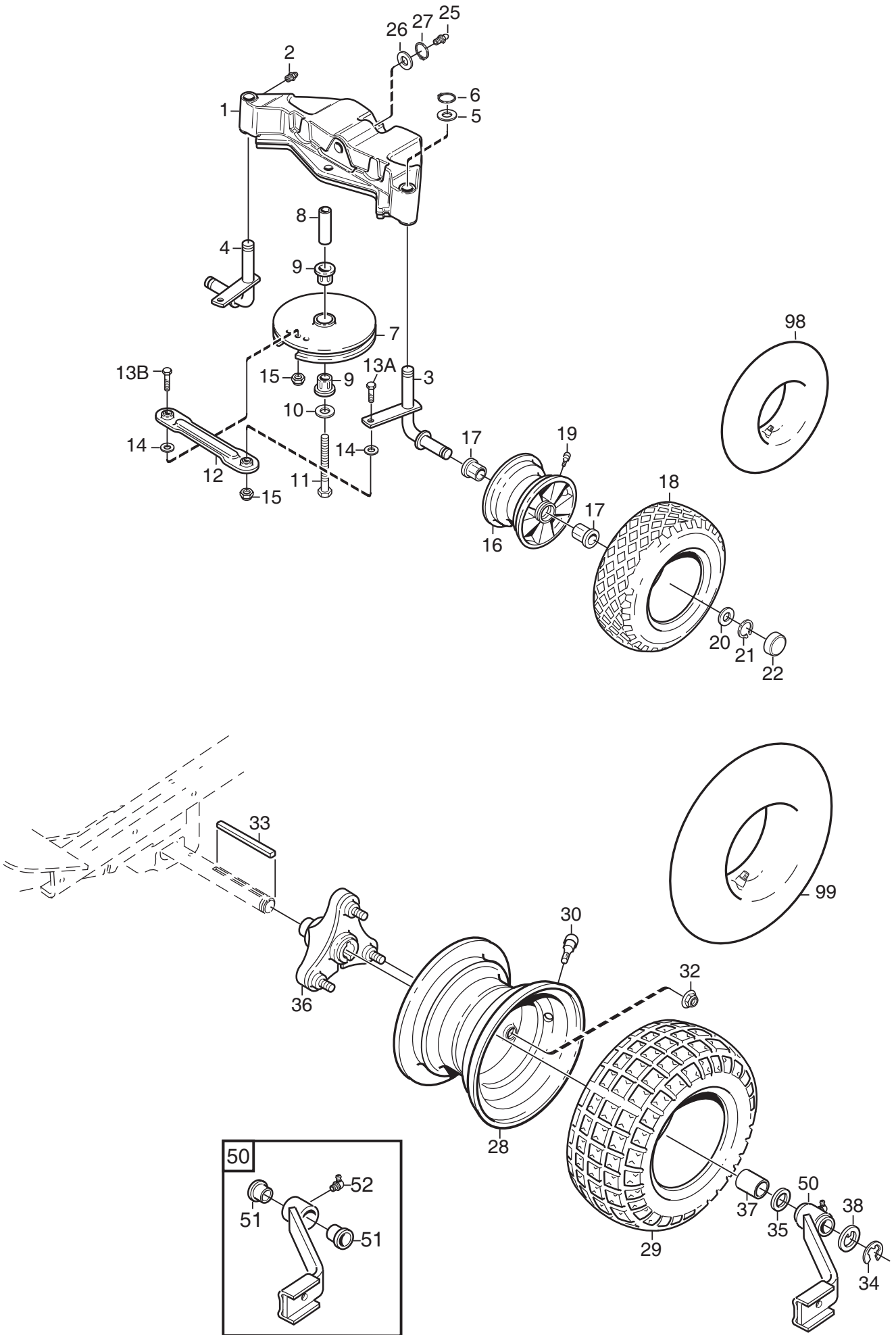
M188A

| Issue Ausgabe 2008- 21 | | Picture No Bild Nr M188A | | 2105M TRANSMISSION | | 2105M TRANSMISSION | | Page Seite 50 | |
|------------------------------|-----------------|--------------------------------|--|-----------------------|-------------------------|----------------------------|--------------------------|---------------------|--------------------------------|
| Fig. Pos. | Quantity/Anzahl | | | | Part No. Artikel Nr. | Description | Bezeichnung | Kit Satz | Notes Anmerkung |
| | 2715 | | | | | | | | |
| 1 | 1 | | | | 1134-4611-01 | Engine belt pulley | Motorriemenscheibe | | |
| 4 | 1 | | | | 1134-5414-01 | Belt guide | Riemenführung | | |
| 5 | 1 | | | | 9699-0056-02 | Flat washer | Scheibe | | |
| 6 | 1 | | | | 1134-4519-01 | Tension arm | Spannarm | | |
| 7 | 1 | | | | 1134-3053-01 | Tension roller | Spannrolle | | |
| 8 | 1 | | | | 1134-4614-01 | Shoulder spacer | Ansatzdistanz | | |
| 9 | 1 | | | | 9997-1040-16 | Screw | Schraube | | |
| 10 | 1 | | | | 9699-0035-02 | Flat washer | Scheibe | | |
| 11 | 1 | | | | 9739-1031-22 | Nut | Mutter | | |
| 12 | 1 | | | | 1134-2989-02 | Tension roller- grey | Spannrolle- grau | | |
| 13 | 1 | | | | 1134-1795-01 | Belt stirrup | Riemenbügel | | |
| 14 | 1 | | | | 9997-1040-16 | Screw | Schraube | | |
| 15 | 2 | | | | 9699-0035-02 | Flat washer | Scheibe | | |
| 16 | 1 | | | | 9739-1031-22 | Nut | Mutter | | |
| 17 | 1 | | | | 9585-0124-01 | V- belt | Keilriemen | | |
| 18 | 1 | | | | 1134-1565-08 | Spacer | Distanz | | |
| 19 | 1 | | | | 9997-0870-16 | Screw | Schraube | | |
| 20 | 2 | | | | 9699-0056-02 | Flat washer | Scheibe | | |
| 21 | 1 | | | | 9739-0831-22 | Nut | Mutter | | |
| 22 | 1 | | | | 1134-5214-01 | Spring | Feder | | |
| 23A | 1 | | | | 1134-5281-01 | Transaxle assy | Getriebe Kpl | | Dana 4360- 197 Dana 6800- 7 |
| 23B | 1 | | | | 1134-6338-01 | Transaxle assy | Getriebe Kpl | | |
| 24 | 4 | | | | 9960-0860-12 | Screw | Schraube | | |
| 25 | 4 | | | | 9747-0831-02 | Lock nut | Mutter | | |
| 26 | 1 | | | | 1134-4687-01 | Strut | Strebe | | |
| 27 | 1 | | | | 9945-0816-16 | Screw | Schraube | | |
| 28 | 1 | | | | 1134-1849-01 | Belt pulley | Riemenscheibe | | |
| 30 | 1 | | | | 9650-0016-04 | Lock ring | Seegersicherung | | |
| 31 | 1 | | | | 1134-4707-01 | Belt guide | Riemenführung | | |
| 32 | 1 | | | | 9942-0820-16 | Screw | Schraube | | |
| 41 | 1 | | | | 1134-2138-01 | Eye bolt | Schrauböse | | |
| 42 | 1 | | | | 1134-4779-01 | Plastic bushing | Plastikbuchse | | |
| 43 | 1 | | | | 9739-0831-22 | Nut | Mutter | | |
| 44 | 1 | | | | 9747-0831-02 | Lock nut | Mutter | | |



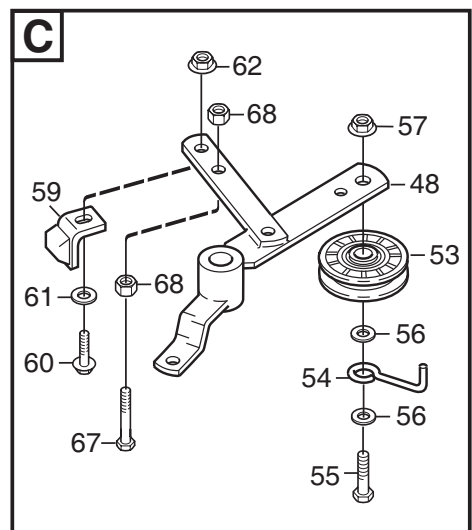
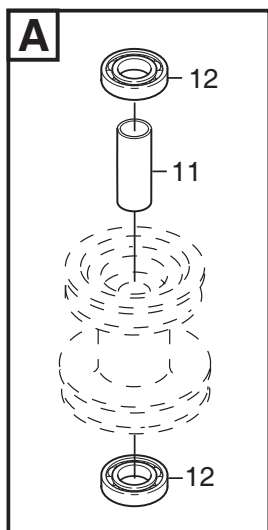
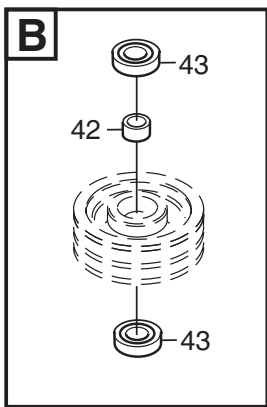
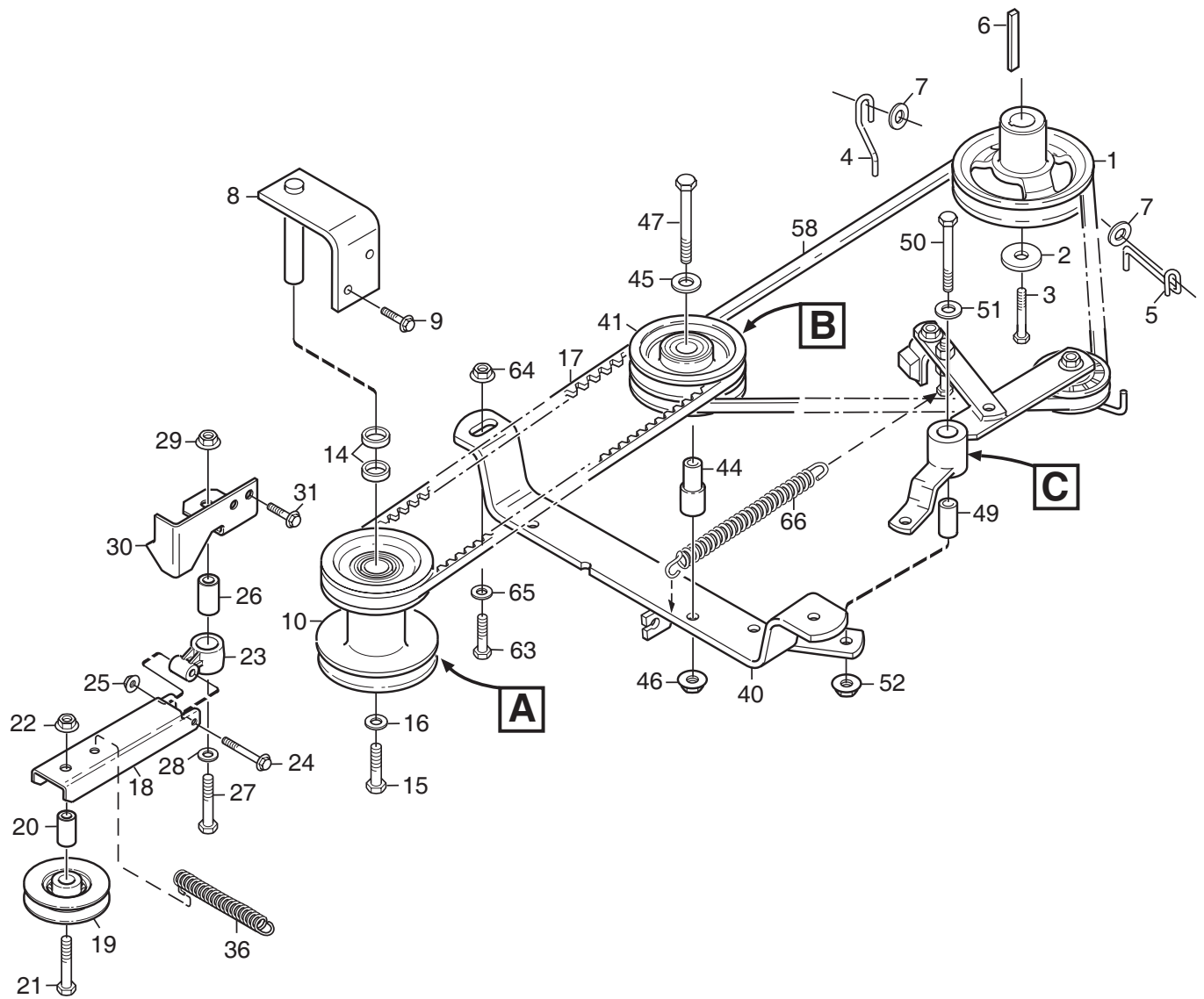
M189A

| Issue Ausgabe 2008-21 | | Picture No Bild Nr M189A | | 2125H TRANSMISSION | | 2125H TRANSMISSION | | Page Seite 52 | |
|-----------------------------|-----------------|--------------------------------|--|-----------------------|-------------------------|----------------------------|----------------------------|---------------------|--------------------|
| Fig. Pos. | Quantity/Anzahl | | | | Part No. Artikel Nr. | Description | Bezeichnung | Kit Satz | Notes Anmerkung |
| | 2716 | | | | | | | | |
| 1 | 1 | | | | 1134-4611-01 | Engine belt pulley | Motorriemenscheibe | | Kanzaki K46AG |
| 4 | 1 | | | | 1134-5414-01 | Belt guide | Riemenführung | | |
| 5 | 1 | | | | 9699-0056-02 | Flat washer | Scheibe | | |
| 6 | 1 | | | | 1134-4519-01 | Tension arm | Spannarm | | |
| 7 | 1 | | | | 1134-3053-01 | Tension roller | Spannrolle | | |
| 8 | 1 | | | | 1134-4614-01 | Shoulder spacer | Ansatzdistanz | | |
| 9 | 1 | | | | 9997-1040-16 | Screw | Schraube | | |
| 10 | 1 | | | | 9699-0035-02 | Flat washer | Scheibe | | |
| 11 | 1 | | | | 9739-1031-22 | Nut | Mutter | | |
| 12 | 1 | | | | 1134-2989-02 | Tension roller- grey | Spannrolle- grau | | |
| 13 | 1 | | | | 1134-1795-01 | Belt stirrup | Riemenbügel | | |
| 14 | 1 | | | | 9997-1040-16 | Screw | Schraube | | |
| 15 | 2 | | | | 9699-0035-02 | Flat washer | Scheibe | | |
| 16 | 1 | | | | 9739-1031-22 | Nut | Mutter | | |
| 17 | 1 | | | | 9585-0099-01 | V- belt | Keilriemen | | |
| 18 | 1 | | | | 1134-1565-08 | Spacer | Distanz | | |
| 19 | 1 | | | | 9997-0870-16 | Screw | Schraube | | |
| 20 | 2 | | | | 9699-0056-02 | Flat washer | Scheibe | | |
| 21 | 1 | | | | 9739-0831-22 | Nut | Mutter | | |
| 22 | 1 | | | | 1134-5214-01 | Spring | Feder | | |
| 23 | 1 | | | | 1134-4846-01 | Transaxle assy | Getriebe kpl | | |
| 24 | 4 | | | | 9960-0860-12 | Screw | Schraube | | |
| 25 | 4 | | | | 9747-0831-02 | Lock nut | Mutter | | |
| 26 | 1 | | | | 1134-6290-01 | Strut | Strebe | | |
| 27 | 1 | | | | 9945-0816-16 | Screw | Schraube | | |
| 28 | 1 | | | | 9997-0840-16 | Screw | Schraube | | |
| 29 | 1 | | | | 9747-0831-02 | Lock nut | Mutter | | |
| 42 | 1 | | | | 1134-5156-01 | Pull rod | Zugstange | | |
| 43 | 1 | | | | 1134-4014-01 | Plastic button | Plastikknopf | | |
| 44 | 1 | | | | 9675-0009-02 | Starlock | Verriegelungsscheibe | | |
| 51 | 1 | | | | 1134-2138-01 | Eye bolt | Schrauböse | | |
| 52 | 1 | | | | 1134-4779-01 | Plastic bushing | Plastikbuchse | | |
| 53 | 1 | | | | 9739-0831-22 | Nut | Mutter | | |
| 54 | 1 | | | | 9747-0831-02 | Lock nut | Mutter | | |
| 55 | 1 | | | | 1134-5319-01 | Belt guide | Riemenführung | | |
| 56 | 1 | | | | 9699-0056-02 | Flat washer | Scheibe | | |



M190C

| Issue Ausgabe 2008-21 | | Picture No Bild Nr M190C | | 2105M- 2125H WHEELS | | 2105M- 2125H RÄDER | | Page Seite 54 | |
|-----------------------------|-----------------|--------------------------------|--|------------------------|-------------------------|-----------------------|-----------------------|---------------------|--------------------|
| Fig. Pos. | Quantity/Anzahl | | | | Part No. Artikel Nr. | Description | Bezeichnung | Kit Satz | Notes Anmerkung |
| | 2715 | | | | | | | | |
| 1 | 1 | | | | 1134-5894-01 | Rear axle..... | Hinterachse..... | | |
| 2 | 2 | | | | 9501-0500-00 | Grease joint..... | Schmiernippel..... | | |
| 3 | 1 | | | | 1134-5009-02 | Spindle- LH..... | Spindel- L..... | | |
| 4 | 1 | | | | 1134-5009-01 | Spindle- RH..... | Spindel- R..... | | |
| 5 | 2 | | | | 9699-0088-02 | Flat washer..... | Scheibe..... | | |
| 6 | 2 | | | | 9650-0020-04 | Circlip..... | Seegersicherung..... | | |
| 7 | 1 | | | | 1134-5316-01 | Steering pulley..... | Lenkdrahtscheibe..... | | |
| 8 | 1 | | | | 1134-5575-01 | Spacer..... | Distanz..... | | |
| 9 | 2 | | | | 1134-0068-00 | Bearing..... | Lager..... | | |
| 10 | 1 | | | | 9699-0104-02 | Washer..... | Scheibe..... | | |
| 11 | 1 | | | | 9997-1680-12 | Screw..... | Schraube..... | | |
| 12 | 2 | | | | 1134-3247-05 | Tie rod..... | Spurstange..... | | |
| 13A | 2 | | | | 9997-0825-16 | Screw..... | Schraube..... | | L = 25 mm |
| 13B | 1 | | | | 9997-0835-12 | Screw..... | Schraube..... | | L = 35 mm |
| 14 | 2 | | | | 9699-0090-02 | Flat washer..... | Scheibe..... | | |
| 15 | 3 | | | | 9747-0831-02 | Lock nut..... | Mutter..... | | |
| 16 | 2 | | | | 1134-4706-01 | Rim..... | Felge..... | | |
| 17 | 4 | | | | 1134-1319-01 | Bearing bush..... | Lagerbuchse..... | | |
| 18 | 2 | | | | 9545-0117-00 | Tyre..... | Reifen..... | | 13 x 5.00 - 6 |
| 19 | 2 | | | | 9545-0500-00 | Valve..... | Ventil..... | | |
| 20 | 2 | | | | 1134-0341-01 | Washer..... | Scheibe..... | | |
| 21 | 2 | | | | 9650-0020-04 | Circlip..... | Seegersicherung..... | | |
| 22 | 2 | | | | 1134-4344-01 | Hub cap..... | Nabenkapsel..... | | |
| 25 | 1 | | | | 9501-0500-00 | Grease joint..... | Schmiernippel..... | | |
| 26 | 1 | | | | 9699-0088-02 | Flat washer..... | Scheibe..... | | |
| 27 | 1 | | | | 9650-0020-04 | Circlip..... | Seegersicherung..... | | |
| 28 | 2 | | | | 1134-5255-01 | Rim..... | Felge..... | | |
| 29 | 2 | | | | 9545-0126-01 | Tyre..... | Reifen..... | | 16 x 6.00 - 8 |
| 30 | 2 | | | | 9545-0500-00 | Valve..... | Ventil..... | | |
| 32 | 6 | | | | 9731-1031-22 | Nut..... | Mutter..... | | |
| 33 | 2 | | | | 1134-2471-03 | Key..... | Keil..... | | |
| 34 | 2 | | | | 9653-0001-04 | Lock ring..... | Schließring..... | | |
| 35 | 2 | | | | 1134-0341-01 | Washer..... | Scheibe..... | | |
| 36 | 2 | | | | 1134-4844-02 | Wheel hub..... | Radnabe..... | | |
| 37 | 2 | | | | 1134-4845-02 | Hub sleeve..... | Nabenhülse..... | | |
| 38 | 2 | | | | 1134-4981-01 | Washer..... | Scheibe..... | | |
| 50 | 2 | | | | 1134-6274-01 | Attachment assy..... | Geräthalter kpl..... | | Pos 51 - 52 incl. |
| 51 | 2 | | | | 1134-1319-01 | • Bearing bush..... | • Lagerbuchse..... | | |
| 52 | 1 | | | | 9501-0502-00 | • Grease joint..... | • Schmiernippel..... | | |
| 98 | | | | | 9545-0204-00 | Inner tube..... | Innenschlauch..... | | Only as spare part |
| 99 | | | | | 9545-0203-00 | Inner tube..... | Innenschlauch..... | | Only as spare part |



| Issue Ausgabe 2008-21 | | Picture No Bild Nr M191D | | 2105M- 2125H POWER TAKE- OFF | | 2105M- 2125H NEBENANTRIEB | | Page Seite 56 | |
|-----------------------------|-----------------|--------------------------------|--|---------------------------------|-------------------------|------------------------------|-----------------------------|---------------------|--------------------|
| Fig. Pos. | Quantity/Anzahl | | | | Part No. Artikel Nr. | Description | Bezeichnung | Kit Satz | Notes Anmerkung |
| | 2715 | | | | | | | | |
| 1 | 1 | | | | 1134- 5046- 01 | Engine belt pulley | Motorriemenscheibe | | L = 2 1/2" |
| 2 | 1 | | | | 1134- 5017- 01 | Washer | Scheibe | | |
| 3 | 1 | | | | 9987- 5332- 16 | Screw | Schraube | | |
| 4 | 1 | | | | 1134- 5058- 01 | Belt guide | Riemenführung | | |
| 5 | 1 | | | | 1134- 5057- 01 | Belt guide | Riemenführung | | |
| 6 | 1 | | | | 9600- 0251- 01 | Key | Keil | | |
| 7 | 2 | | | | 9699- 0056- 02 | Flat washer | Scheibe | | |
| 8 | 1 | | | | 1134- 4650- 01 | Pulley bracket | Riemenscheibebügel | | |
| 9 | 2 | | | | 9945- 0816- 16 | Screw | Schraube | | |
| 10 | 1 | | | | 1134- 4643- 01 | Intermediate pulley | Zwischenriemenscheibe | Pos 11 - 12 incl. | |
| 11 | 1 | | | | 1134- 0051- 12 | • Spacer | • Distanz | | |
| 12 | 2 | | | | 9549- 0019- 00 | • Ball bearing | • Kugellager | | |
| 14 | 2 | | | | 1134- 0052- 00 | Bearing spacer | Lagerdistanz | | |
| 15 | 1 | | | | 9997- 1040- 16 | Screw | Schraube | | |
| 16 | 1 | | | | 9699- 0035- 02 | Flat washer | Scheibe | | |
| 17 | 1 | | | | 9585- 0139- 01 | V- belt | Keilriemen | | |
| 18 | 1 | | | | 1134- 5231- 01 | Tension arm | Spannarm | | |
| 19 | 1 | | | | 1134- 6329- 01 | Tension roller | Spannrolle | | |
| 20 | 1 | | | | 1134- 4619- 01 | Spacer | Distanz | | |
| 21 | 1 | | | | 9997- 1060- 12 | Screw | Schraube | | |
| 22 | 1 | | | | 9731- 1031- 22 | Nut | Mutter | | |
| 23 | 1 | | | | 1134- 6314- 01 | Attachment | Halterung | | |
| 24 | 1 | | | | 9997- 0640- 12 | Screw | Schraube | | |
| 25 | 1 | | | | 9747- 0631- 02 | Lock nut | Mutter | | |
| 26 | 1 | | | | 1134- 4619- 01 | Spacer | Distanz | | |
| 27 | 1 | | | | 9930- 1050- 12 | Screw | Schraube | | |
| 28 | 1 | | | | 9699- 0035- 02 | Flat washer | Scheibe | | |
| 29 | 1 | | | | 9731- 1031- 22 | Nut | Mutter | | |
| 30 | 1 | | | | 1134- 4708- 02 | Bracket | Halterung | | |
| 31 | 2 | | | | 9945- 0816- 16 | Screw | Schraube | | |
| 36 | 1 | | | | 1131- 1507- 00 | Spring | Feder | | |
| 40 | 1 | | | | 1134- 5037- 01 | Bracket | Bügel | | |
| 41 | 1 | | | | 1134- 1769- 03 | Centre pulley assy | Riemenscheibe Kpl | Pos 42 - 43 incl. | |
| 42 | 1 | | | | 1134- 0051- 09 | • Spacer | • Distanz | | |
| 43 | 2 | | | | 9549- 0019- 00 | • Ball bearing | • Kugellager | | |
| 44 | 1 | | | | 1134- 1839- 02 | Shaft | Achse | | |
| 45 | 1 | | | | 9699- 0035- 02 | Flat washer | Scheibe | | |
| 46 | 1 | | | | 9739- 1031- 22 | Nut | Mutter | | |
| 47 | 1 | | | | 9997- 1070- 12 | Screw | Schraube | | |
| 48 | 1 | | | | 1134- 5541- 01 | Clutch lever | Kupplungsarm | | |
| 49 | 1 | | | | 1134- 1565- 10 | Spacer | Distanz | | |
| 50 | 1 | | | | 9997- 0860- 16 | Screw | Schraube | | |
| 51 | 1 | | | | 9699- 0056- 02 | Flat washer | Scheibe | | |
| 52 | 1 | | | | 9739- 0831- 22 | Nut | Mutter | | |
| 53 | 1 | | | | 1134- 2989- 02 | Tension roller- grey | Spannrolle- grau | | |
| 54 | 1 | | | | 1134- 1795- 01 | Belt stirrup | Riemenbügel | | |
| 55 | 1 | | | | 9997- 1040- 16 | Screw | Schraube | | |
| 56 | 2 | | | | 9699- 0035- 02 | Flat washer | Scheibe | | |
| 57 | 1 | | | | 9739- 1031- 22 | Nut | Mutter | | |
| 58 | 1 | | | | 9585- 0138- 01 | V- belt | Keilriemen | | |
| 59 | 1 | | | | 1134- 4164- 03 | Brake pad | Bremsklotz | | |
| 60 | 1 | | | | 9959- 0820- 16 | Screw | Schraube | | |
| 61 | 1 | | | | 9699- 0090- 02 | Flat washer | Scheibe | | |
| 62 | 1 | | | | 9747- 0831- 02 | Lock nut | Mutter | | |
| 63 | 2 | | | | 9959- 0820- 16 | Screw | Schraube | | |
| 64 | 2 | | | | 9739- 0831- 22 | Nut | Mutter | | |
| 65 | 1 | | | | 9699- 0056- 02 | Flat washer | Scheibe | | |
| 66 | 1 | | | | 1131- 1506- 00 | Spring | Feder | | |
| 67 | 1 | | | | 9997- 0860- 16 | Screw | Schraube | | |
| 68 | 2 | | | | 9739- 0831- 22 | Nut | Mutter | | |