



REPAIR PARTS MANUAL
MODEL NO. 15-107R (MBA15T107RA)
Lawn Tractor

Mr. Bricolage

HOW TO USE THIS MANUAL

This manual is designed to provide the customer with a means to identify the parts on his/her tractor when ordering repair parts. The illustrations may or may not represent the actual assemblies; therefore, it is not recommended to use this manual as a guide to assemble or disassemble the tractor. Some hardware and parts are drawn larger in order to more readily identify them.

Each tractor has its own model number.

The model number for your tractor can be found on the fender under the seat.

When ordering parts, always give the following information:

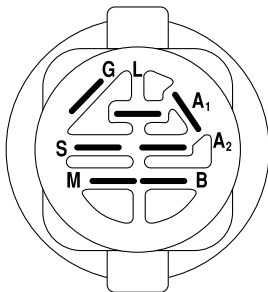
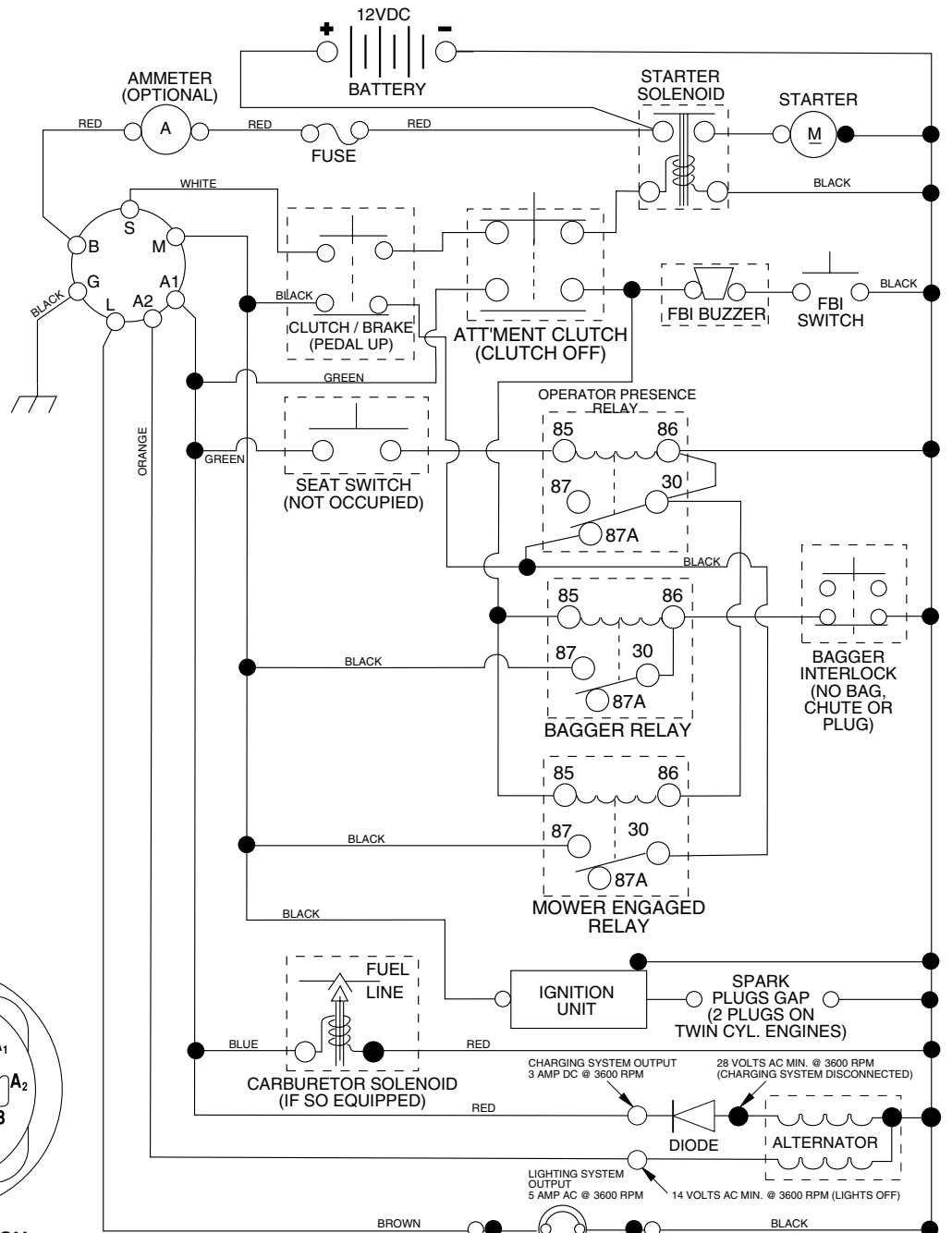
- Product - "Lawn Tractor"
- Model Number - "15-107R" (MBA15T107RA)
- Part Number
- Part Description

TABLE OF CONTENTS

SCHEMATIC	3
ELECTRICAL	4-5
CHASSIS AND ENCLOSURES	6-7
DRIVE	8-9
STEERING ASSEMBLY	10-11
SEAT ASSEMBLY	12
DECALS	13
ENGINE	14-15
LIFT	16
BAGGER	17
MOWER DECK	18-19

TRACTOR- -MODEL NO. 15-107R (MBA15T107RA)

SCHEMATIC



IGNITION SWITCH

POSITION	CIRCUIT	"MAKE"
OFF	M+G+A1	NONE
RUN/LIGHT	B+A1	A2+L
RUN	B+A1	NONE
START	B + S + A1	NONE

WIRING INSULATED CLIPS
NOTE: IF WIRING INSULATED CLIPS WERE REMOVED FOR SERVICING OF UNIT, THEY SHOULD BE REPLACED TO PROPERLY SECURE YOUR WIRING.

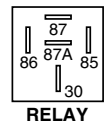


PTO SWITCH

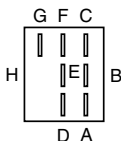
POSITION	CIRCUIT
OFF	C + G, B + H
ON	C + F, B + E, A + D

NOTE

YOUR TRACTOR IS EQUIPPED WITH A SPECIAL ALTERNATOR SYSTEM. THE LIGHTS ARE NOT CONNECTED TO THE BATTERY, BUT HAVE THEIR OWN ELECTRICAL SOURCE. BECAUSE OF THIS, THE BRIGHTNESS OF THE LIGHTS WILL CHANGE WITH ENGINE SPEED. AT IDLE THE LIGHTS WILL DIM. AS THE ENGINE IS SPEEDED UP, THE LIGHTS WILL BECOME THEIR BRIGHTEST.



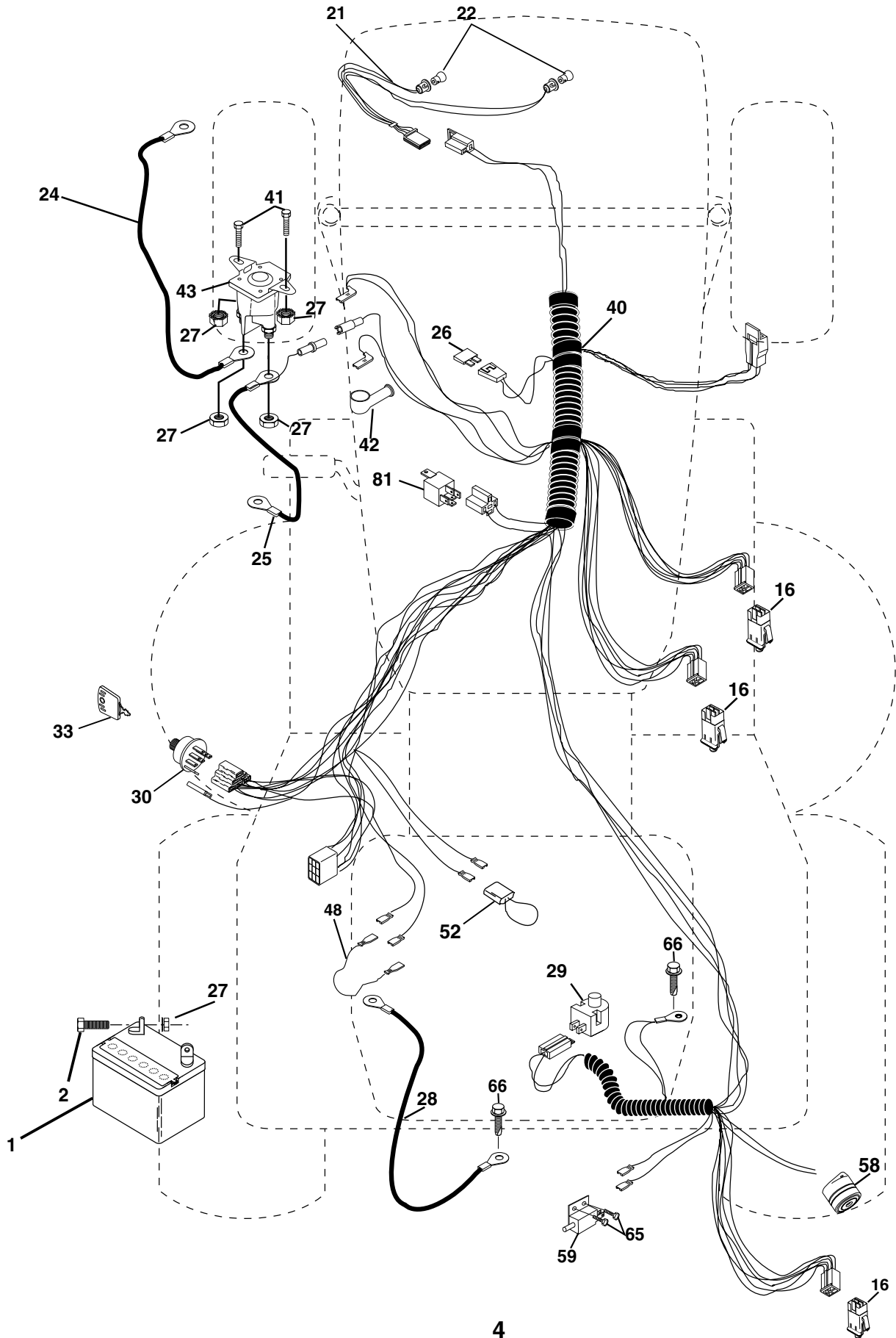
RELAY



REPAIR PARTS

TRACTOR- -MODEL NO. 15-107R (MBA15T107RA)

ELECTRICAL



REPAIR PARTS

TRACTOR- -MODEL NO. 15-107R (MBA15T107RA)

ELECTRICAL

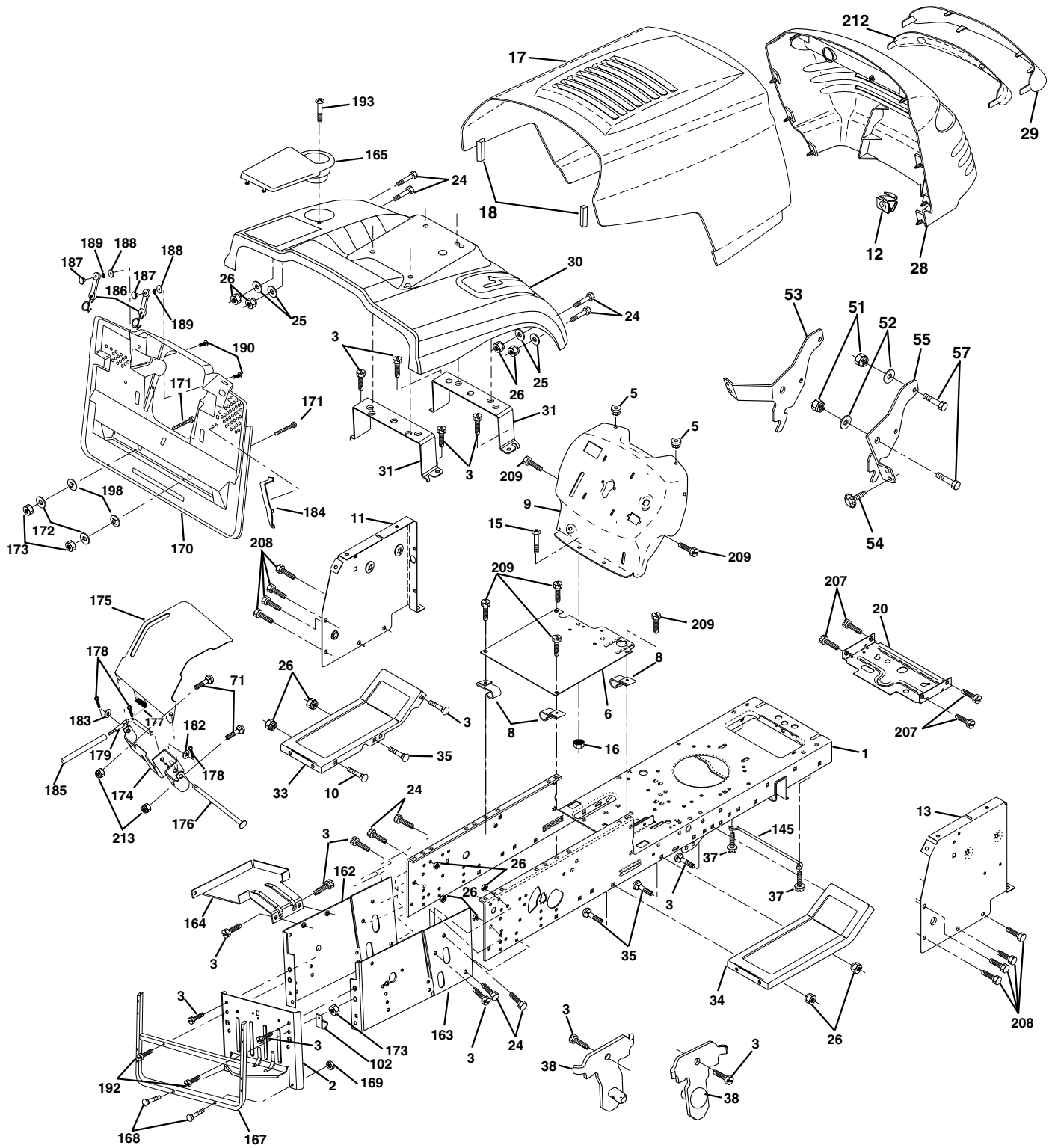
KEY NO.	PART NO.	DESCRIPTION
1	144925	Battery 12 Volt 25 AMP Wet
2	74760412	Bolt Hex Hd 1/4-20 Unc X 3/4
16	153664	Switch Interlock Push-In
21	166181	Harness Asm Light W/4152J
22	4152J	Bulb Light #1156
24	108423X	Cable Battery 6Ga 16" Red
25	165987	Cable Battery Crd 56" Red
26	175158	Fuse
27	73510400	Nut Keps Hex 1/4-20 Unc
28	127725X	Cable Ground 6Ga 18" Black
29	160784	Switch Plunger Normal Op Olive
30	175566	Switch Ignition
33	140401	Key Ign
40	170164	Harness Ign Crd
41	71110408	Bolt Flk Fin Hex 1/4-20 Unc X 1/2
42	131563	Cover Terminal Red
43	175141	Solenoid
48	140844	Adapter Ammeter Rectangular
52	141940	Protection Wire Loop
58	169419	Buzzer Crd
59	166299	Switch FBI CRD
65	17211008	Screw Slftp #10-16 x 1/2 Ty-Ab
66	17490608	Screw Thdrol 3/8-16 x 1/2 Ty-Tt
81	109748X	Relay Asm

NOTE: All component dimensions given in U.S. inches.
1 inch = 25.4 mm.

REPAIR PARTS

TRACTOR- -MODEL NO. 15-107R (MBA15T107RA)

CHASSIS AND ENCLOSURES



REPAIR PARTS

TRACTOR- -MODEL NO. 15-107R (MBA15T107RA)

CHASSIS AND ENCLOSURES

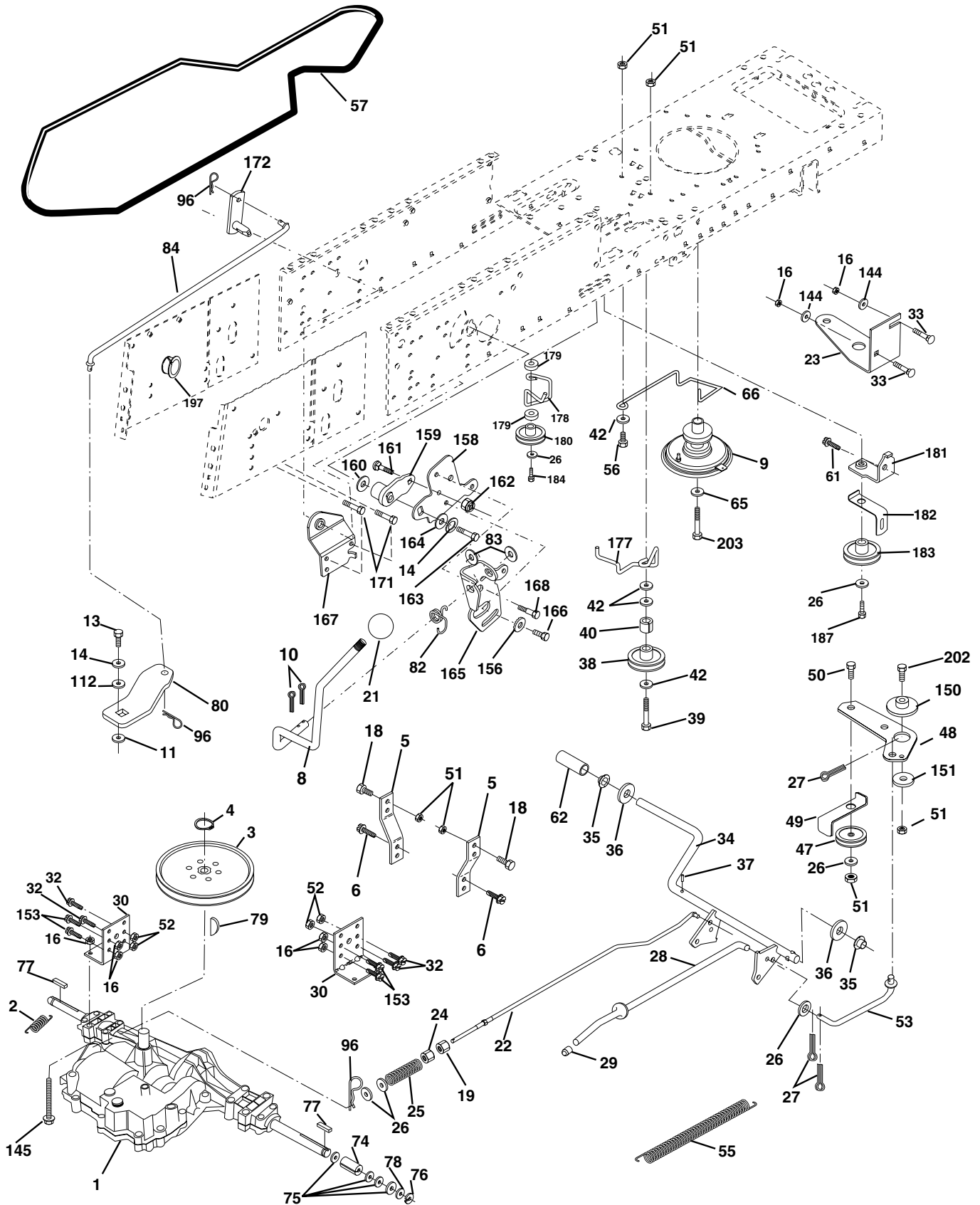
KEY NO.	PART NO.	DESCRIPTION	KEY NO.	PART NO.	DESCRIPTION
1	169831	Chassis	145	156524	Rod Pivot Chassis/Hood
2	165606	Drawbar	162	170256	Bracket Exten Chassis Lh CRD
3	17060612	Screw 3/8-16 x 3/4	163	175770	Bracket Exten Chassis Rh CRD
5	155272	BumperHood/Dash	164	165605	Support Battery CRD
6	155923	Saddle	165	165742X428	Cover Battery CRD Lt
8	126471X	Clip Insulator 13/32 Mtg. Hole	167	165779	Support Asm Backplate Wldmnt
9	168347X011	Dash	168	72050412	Bolt, RDHD SHT NK 1/4-20 x 1-1/2
10	72140608	Bolt, Carriage 3/8-16 x 3/4	169	123976X	Nut, Lock 1/4 LGE FLG Gr. 5 Zinc
11	155927	Panel, Dash, L.H.	170	175264	Backplate Asm CRD
12	145660	Clip Tinnerman Grille P/L	171	72140620	Bolt Rdhd Sqnk 3/8-16 x 2-1/2 Gr 5
13	172107X010	Panel, Asm. Dash R.H.	172	19132016	Washer 13/32 x 1-1/4 x 16 Ga.
15	74180512	Screw, Machine, Truss Head 5/16-18 UNC x 3/4	173	73510600	Nut, Keps Hex 3/8-16 UNC
16	73510500	Nut	174	165939	Bracket Switch FBI CRD
17	159639X558	Hood Assembly	175	166212	Guard Door Rear CRD
18	126938X	BumperHood	176	128600	Pin Hinge Pivot
20	156437	Plate Mtg. Battery/Fuel Tank	177	132796	Spring Bagger Top LH Black
24	74780616	Bolt	178	76020312	Pin Cotter 3/32 x 3/4 Cad Zinc
25	19131312	Washer 13/32 x 13/16 x 12 Gauge	179	165942	Rod Pivot FBI CRD
26	73800600	Nut	182	138200	Washer .385 x .625 x 11 Ga.
28	150407	Grille/Lens Asm	183	19131316	Washer 13/32 x 13/16 x 16 Ga.
29	150209X599	Lens, Grille	184	174662	Bracket Actuator Bagger CRD
30	165714X558	Fender	185	165940	Tube Lever Switch FBI CRD
31	165156	Bracket, Fender Support	186	160793	Latch Asm Multch Bagger
33	145244X558	Footrest, L.H.	187	2029J	Nut Weld .327/.304 #10-24
34	145243X558	Footrest, R.H.	188	19061216	Washer #10
35	72110606	Bolt	189	10071000	Washer Lock #10
37	17490508	Screw Thdrol 5/16-18 x 1/2 TYT	190	71081010	Screw Pan Hd Phil 10-24 x 5/8
38	169834	Bracket Asm Pivot Mower Rear	192	17060624	Screw 3/8-16 x 1-1/2
51	73800400	Nut Lock w/Insert 1/4-20 UNC	193	17070412	Screw Truss 1/4-20 x 3/4
52	19091416	Washer 9/32 x 7/8 x 16 Ga.	198	168937	Nut Push
53	144697	Bracket Grille Lh	207	17670508	Screw Thdrol 5/16-18 x 1/2
54	161464	Screw Hex Wsh hd 8-18 x 7/8	208	17670608	Screw Thdrol 3/8-16 x 1/2
55	144696	Bracket Grille Rh	209	17000612	Screw Hex Wsh Thdrol 3/8-16
57	74780412	Bolt, Fin Hex 1/4-20 UNC x .75	212	156494	Insert Lens Reflect
71	73680400	Nut Crownlock 1/4-20 Unc	213	72110406	Bolt Carr.
102	2751R	Clip Fuel Line	--	5479J	Plug, Button

NOTE: All component dimensions given in U.S. inches.
1 inch = 25.4 mm.

REPAIR PARTS

TRACTOR- -MODEL NO. 15-107R (MBA15T107RA)

DRIVE



REPAIR PARTS

TRACTOR- -MODEL NO. 15-107R (MBA15T107RA)

DRIVE

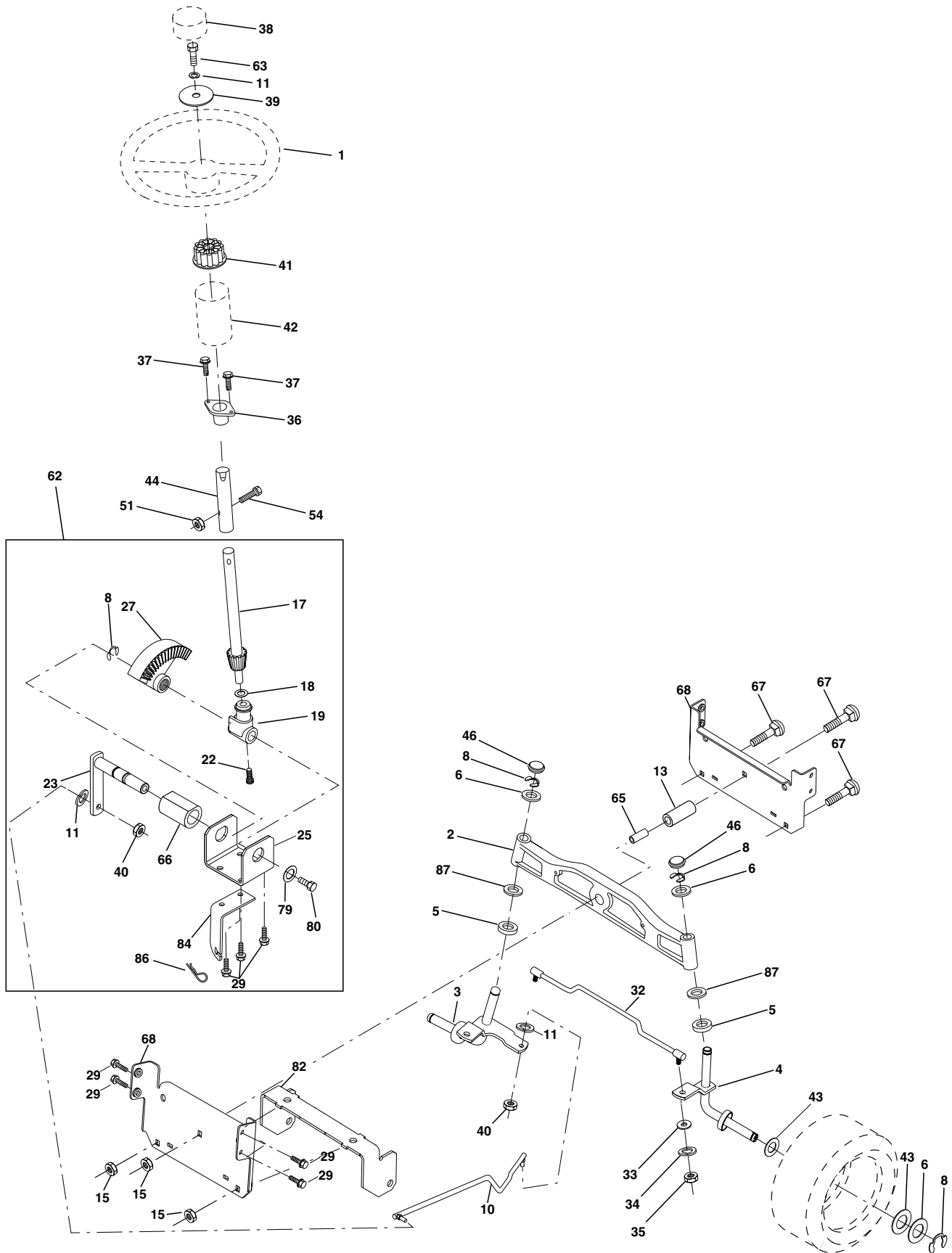
KEY NO.	PART NO.	DESCRIPTION	KEY NO.	PART NO.	DESCRIPTION
1	-----	Transaxle Peerless Model 206-546 (Order parts from transaxle manufacturer)	62	8883R	Cover Pedal Blk Round
2	146682	Spring Return Brake	65	10040700	Washer
3	165999	Pulley Transaxle 7"	66	154778	Keeper Belt Engine
4	12000028	Ring Retainer #5100-62	74	137057	Spacer Axle
5	121520X	Strap Torque 30 Degrees	75	121749X	Washer 25/32 x 1 1/4 x 16 Ga
6	17060512	Screw 5/16-18 x 3/4	76	12000001	E-romg
8	165619	Rod Shift Fender Adjust LT	77	123583X	Key Square 2.0 x .1845/ .1865
9	170163	Clutch Asm Noram	78	121748X	Washer 25/32 x 1-5/8 x 16 Ga
10	76020416	Pin Cotter 1/8 x 1 Cad	79	2228M	Key Woodruff #9 3/16 x 3/4
11	105701X	Washer Plate Shf. .388 Sq Hole	80	145090	Arm Shift
13	74550412	Bolt 1/4-28 Unf Gr 8 W/Patch	82	123782X	Spring, Torsion
14	10040400	Washer Lock Hvy Helical 1/4	83	19171216	Washer 17/32 x 3/4 x 16 Ga
16	73800500	Nut Lock Hex w/Ins 5/16-18 Unc Pl	84	165621	Link Shift CRD PMST
18	74780616	Bolt, Fin Hex 3/8-16 x 1 Gr 5	96	4497H	Retainer Spring 1" Zinc/Cad
19	73800600	Nut Lock 3/8-16 Unc	112	19091210	Washer 9/32 x 3/4 x 10 Ga
21	106933X	Knob Rd 1/2-13 Plstc. Thdrol Black	144	19111016	Washer 11/32 x 5/8 x 16 Ga.
22	165811	Rod Brake PPMST CRD	145	74490540	Bolt Hex Flghd 5/16-18 x Gr. 5
23	170017	Bracket Clutch	150	165850	Bushing Bellcrank Grd Drive
24	73350600	Nut Hex Jam 3/8-16 Unc	151	19133210	Washer 13/32 x 2 x 10 Ga.
25	106888X	Spring Rod Brake 2.00 Zinc	153	74760516	Bolt Hex Hd 5/16-18 Unc x 1
26	19131316	Washer 13/32 x 13/16 x 16 Ga.	156	166002	Washer Srrted 5/16 ID x 1 x .125
27	76020412	Pin Cotter 1/8 x 3/4 Cad	158	165589	Bracket Shift Mount
28	145204	Rod Brake Parking LT/YT	159	165494	Hub Tapered Flange Shift Lt
29	71673	Cap Brake Parking	160	19292016	Washer 29/32 x 1-1/4 x 16 Ga.
30	174973	Bracket Mtg Transaxle	161	72140406	Bolt Rdhd Sqnk 1/4-20 x 3/4 x Gr 5
32	74760512	Bolt Hex Hd 5/16-18 Unc x 3/4	162	73680400	Nut Crownlock 1/4-20 Unc
33	72140506	Bolt Rdhd Sqnk 5/16-18 Unc x 3/4	163	74780416	Bolt Hex Fin 1/4+20 Unc x 1 Gr 5
34	165496	Shaft Asm Pedal Foot CRD	164	19091010	Washer 5/8 x .281 x 10 Ga.\
35	120183X	Bearing Nylon Blk 629 Id	165	165623	Bracket Pivot Lever
36	19211616	Washer 21/32 x 1 x 16 Ga	166	166880	Screw 5/16 -18 x 5/8
37	1572H	Pin Roll 3/16 x 1"	167	165588	Bracket Support Shift CRD
38	165936	Pulley Flat Composite 3.06	168	165492	Bolt Shoulder 5/16-18 x .561
39	74760644	Bolt Fin Hex 3/8-16 Unc x 2-3/4	171	17490608	Screw Thdrol 3/8-16 x 1/2 TY-TT
40	4470J	Spacer Split .395 x .59 Bzp	172	165635	Shaft Asm Shift Front CRD PMST
42	19131312	Washer 13/32 x 13/16 x 12 Ga	177	165932	Keeper Flat Idler 3.06
47	127783	Pulley Idler V Groove Plastic	178	165933	Keeper Belt Idler 1.88"CRD
48	154407	Bellcrank Clutch Grnd Drv Stl	179	120958X	Washer Sintered
49	123205X	Retainer Belt Style Spring	180	165630	Pulley Flat Idler 1.88"CRD
50	74760624	Bolt Hex Hd 3/8-16 Unc x 1-1/2	181	165797	Bracket Idler Ground Drive CRD
51	73680600	Nut Crownlock 3/8-16 Unc	182	165634	Keeper Belt 2.5" Od V-Idler CRD
52	73680500	Nut Crownlock 5/16-18 Unc	183	165626	Pulley V-Idler 2.50" Od CRD
53	105710X	Link Clutch	184	17490644	Scr Hex Wsh Thdrol 3/8-16 x 2-3/4
55	105709X	Spring Return Clutch 6.75	187	17490620	Screw Thdrol 3/8-16 x 1-1/2 TY-TT
56	74760620	Bolt Fin Hex 3/8-16 x 1-1/4	197	169613	Nyliner Snap-In 5/8" ID
57	165631	V-Belt Kev 111" PMST CRD	202	72110612	Bolt Carr Sh 3/8-16 x 1-1/2 Gr. 5
61	17060612	Screw 3/8-16 x 3/4	203	71170780	Bolt Hex 7/16-20 x 5

NOTE: All component dimensions given in U.S. inches.
1 inch = 25.4 mm.

REPAIR PARTS

TRACTOR- -MODEL NO. 15-107R (MBA15T107RA)

STEERING ASSEMBLY



REPAIR PARTS

TRACTOR- -MODEL NO. 15-107R (MBA15T107RA)

STEERING ASSEMBLY

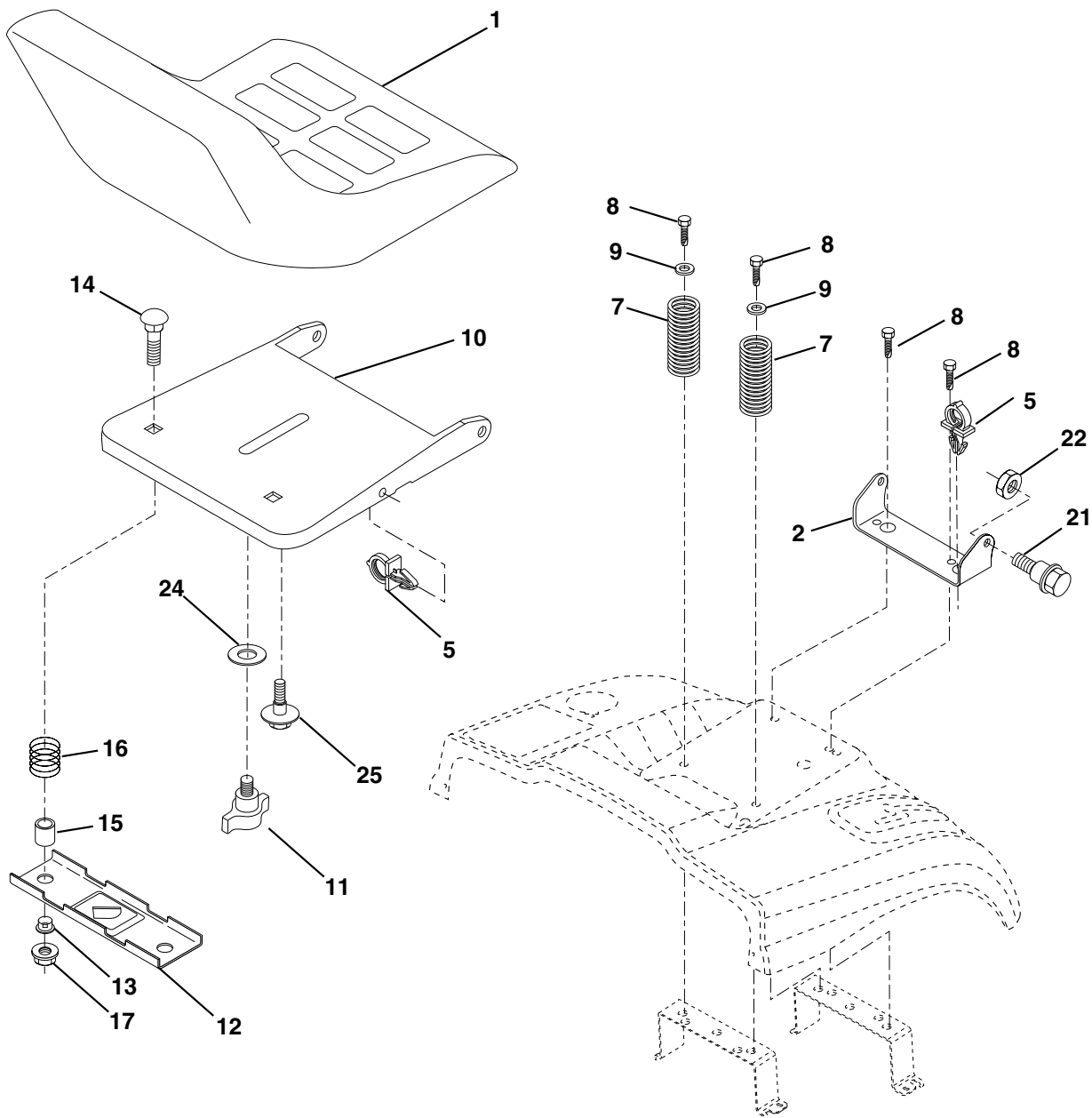
KEY NO.	PART NO.	DESCRIPTION
1	139768	Steering Wheel
2	172393	Axle Asm Cast Iron Lt
3	169840	Spindle Assembly, L.H.
4	169839	Spindle Assembly, R.H.
5	6266H	Bearing, Race, Thrust, Hardened
6	121748X	Washer 25/32 x 1-5/8 x 16 Gauge
8	12000029	Ring, Klip
10	169832	Link, Drag
11	10040600	Washer, Lock
13	136518	Spacer Brg Axle Front
15	145212	Nut Hexflange Lock
17	156546	Shaft Assembly, Steering
18	57079	Washer, Thrust .515 x .750 x .033
19	160395	Support, Shaft
22	165857	Screw Hex Wshhd Torx
23	165851	Pittman Shaft Assembly
25	154406	Bracket, Steering
27	136874	Gear, Sector
29	17060612	Screw 3/8-16 x 3/4
32	170162	Rod, Tie
33	19111216	Washer 11/32 x 3/4 x 16 Ga.
34	10040500	Washer Lock Hvy Hlcl Spr 5/16
35	73540500	Crownlock Nut 5/16-24
36	155099	Bushing, Steering
37	152927	Screw TT #10-32 x 5 x 3/8 Flange
38	140175	Cap Wheel Steer
39	19133812	Washer 13/32 x 2-3/8 x 12 Gauge
40	7810H	Nut Lock Center 3/8-24 Unf
41	100711L	Adaptor, Steering Wheel
42	145054X428	Boot, Steering Dash P/L Mtl
43	121749X	Washer 25/32 x 1-1/4 x 16 Gauge
44	153720	Extension Steering Non-Adjust
46	121232X	Cap, Spindle
51	73800500	Nut Lock Hx W/Ins 5/16-18 UNC
54	74780520	Bolt Fin Hex 5/16-18 UNC x 1-1/4
62	167914	Kit, Steering Assembly, Service
63	74780616	Bolt Fin Hex 3/8-16 unc. x 1 Gr. 5
65	160367	Spacer Brace Axle
66	154404	Bearing Arm Pittman
67	72140618	Bolt Rdhd Sq 3/8-16 Unc x 2-1/4
68	169827	Brace Axle
79	19132012	Washer 13/32 x 1-1/4 x 12 Ga
80	74950612	Bolt Hex Nylon 3/8-16 x 3/4
82	169835	Bracket Susp Chassis Front
84	170016	Bracket Cable Clutch Chassis
86	165898	Retainer Spring Yellow
87	173966	Washer Flat .781 x 1-1/2 x .14

NOTE: All component dimensions given in U.S. inches.
1 inch = 25.4 mm.

REPAIR PARTS

TRACTOR- -MODEL NO. 15-107R (MBA15T107RA)

SEAT ASSEMBLY



KEY NO.	PART NO.	DESCRIPTION
1	175390	Seat
2	140551	Bracket Pnt Pivot Seat (blk)
5	145006	Clip Push In Hinged
7	124181X	Spring Seat Cprsn 2 250 Blk Zi
8	17000616	Screw 3/8-16 X 1
9	19131614	Washer 13/32 X 1 X 14 Ga
10	174894	Pan Pnt Seat (blk)
11	166369	Knob Seat Adj. Wingnut
12	121246X	Bracket Pnt Mounting Switch
13	121248X	Bushing Snap Blk Nyl 50 Id

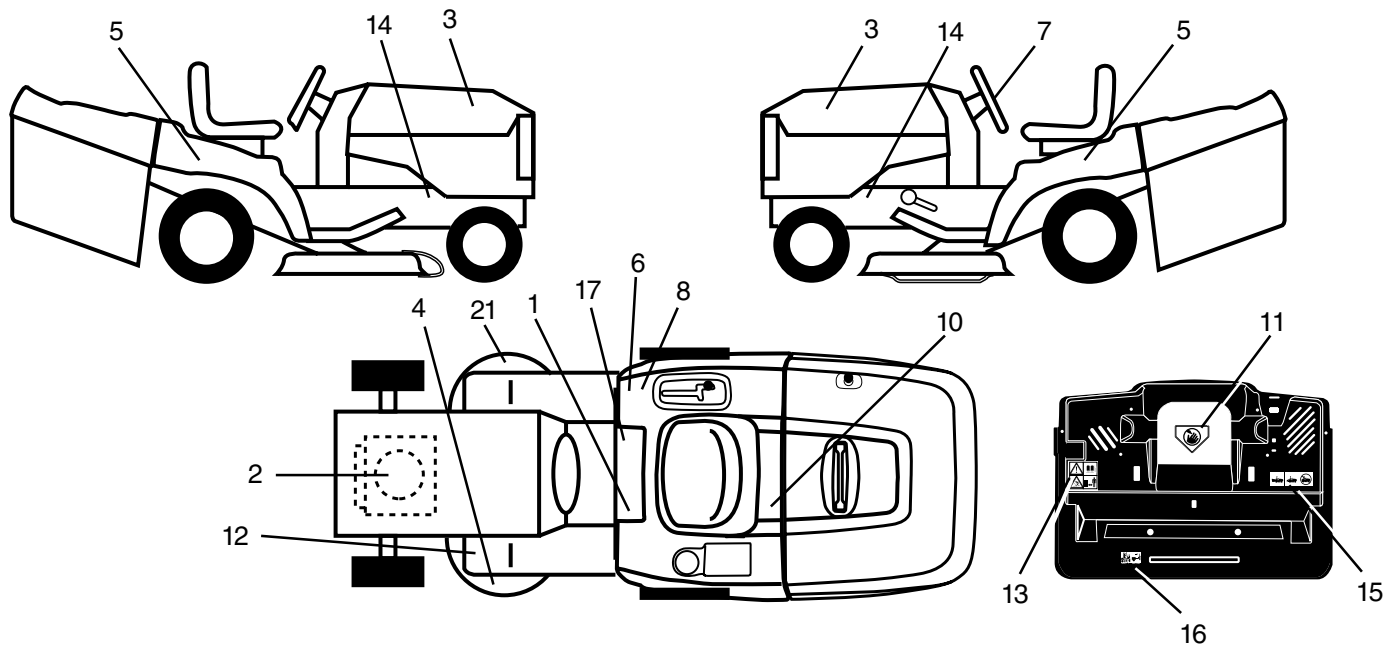
KEY NO.	PART NO.	DESCRIPTION
14	72050412	Bolt Rdhd Sht Nk 1/4-20x1-1/2
15	121249X	Spacer Split 28 X .88 Zinc
16	123740X	Spring Cprsn
17	123976X	Nut Lock 1/4 Lge Flg Gr 5 Zinc
21	171852	Bolt Shoulder 5/16-18 Unc-2A
22	73800500	Nut Hex Lock w/Ins 5/16-18
24	19171912	Washer 17/32 X 1-3/16 X 12 Ga.
25	127018X	Bolt Shoulder 5/16-18 X 62

NOTE: All component dimensions given in U.S. inches.
1 inch = 25.4 mm

REPAIR PARTS

TRACTOR- -MODEL NO. 15-107R (MBA15T107RA)

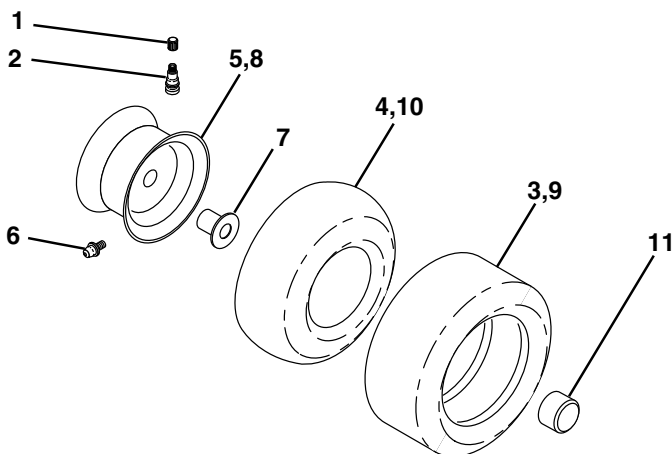
DECALS



KEY NO.	PART NO.	DESCRIPTION
1	145498	Decal Read Owner's Manual Sym
2	64-1730-29	Decal Hp Engine
3	171668	Decal Hood Logo
4	134999	Decal Enviro Deck Yellow
5	175801	Decal Fender
6	126187X	Decal 100 DBA
7	167970	Decal Strng Wheel Logo
8	145437	Decal Europe Stand Ce
10	145005	Decal Bat Dan/Poi P/L Sym Wpn
11	145494	Decal Mower Cut Finger Symbol
12	159737	Decal Brake/Clutch Symbol Lt

KEY NO.	PART NO.	DESCRIPTION
13	166959	Decal Warn Back Plate CRD
14	159736	Decal Chassis Hot Muffler
15	166961	Decal Oper Bag Presence CRD
16	162598	Decal Drawbar Load Limit
17	140837	Decal Saddle Brake Parking
21	166286	Decal Hex Belt Sch 92 CRD
--	138311	Decal Lift Handle
--	157199X428	Pad Footrest
--	176522	Manual Operator's (Euro)
--	176523	Manual Part's

WHEELS & TIRES



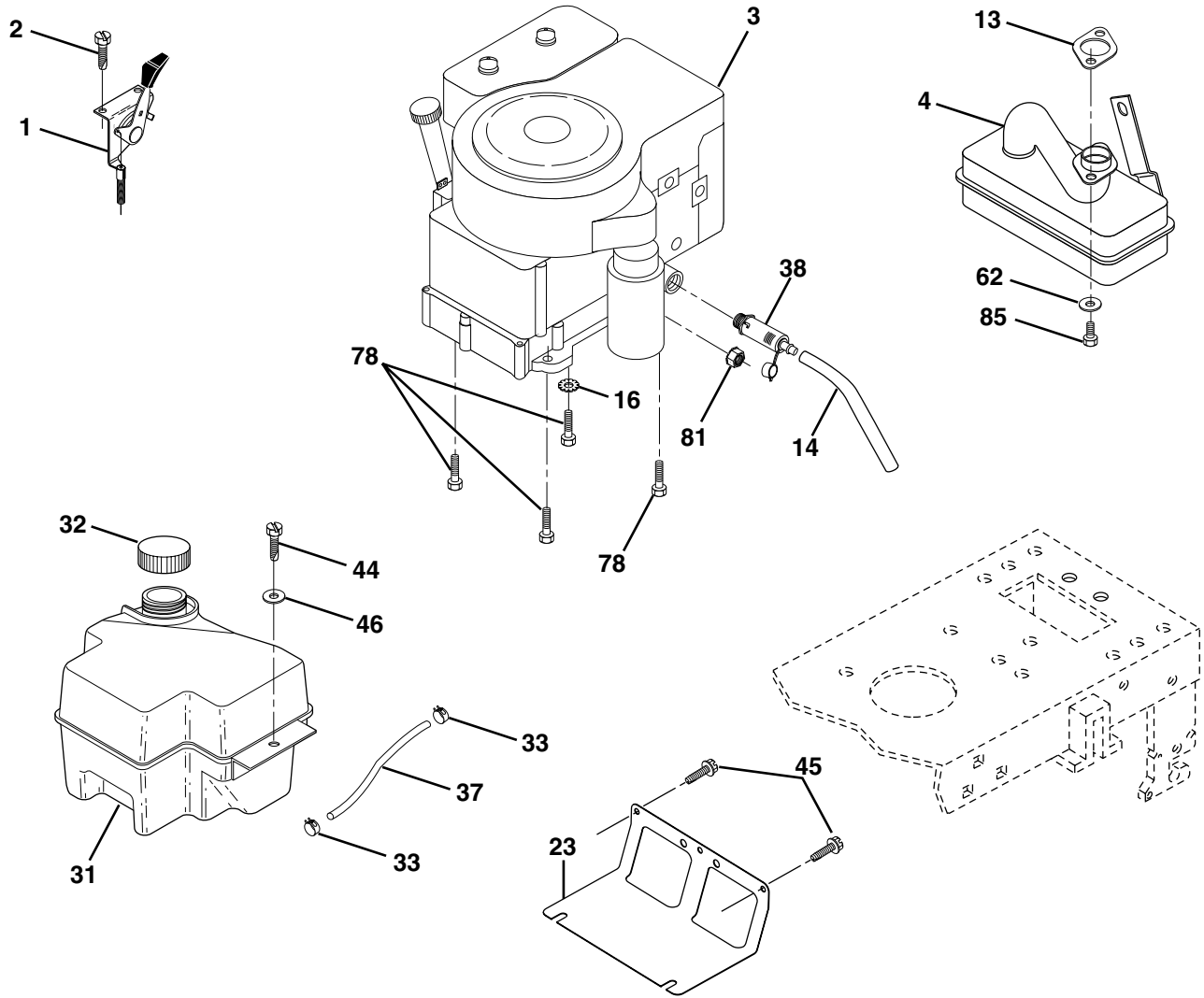
KEY NO.	PART NO.	DESCRIPTION
1	59192	Cap Value Tire
2	65139	Stem Value
3	106222X	Tire F Ts 15 X 6 0 - 6 Service
4	59904	Tube Inner Front #35060
5	106732X427	Rim Asm 6" front Service
6	278H	Fitting Grease
7	9040H	Bearing Flange
8	106108X427	Rim Asm 8" rear Service
9	124635X	Tire R Ts 18 x 8.5-8 Service
10	7152J	Tube Rear 9 5 X 8 Service
11	104757X428	Cap Axle Blk 1 50 X 1 00
--	144334	Sealant, Tire (10 oz. tube)

NOTE: All component dimensions given in U.S. inches
1 inch = 25.4 mm

REPAIR PARTS

TRACTOR- -MODEL NO. 15-107R (MBA15T107RA)

ENGINE



29

OPTIONAL EQUIPMENT
Spark Arrester

REPAIR PARTS

TRACTOR- -MODEL NO. 15-107R (MBA15T107RA)

ENGINE

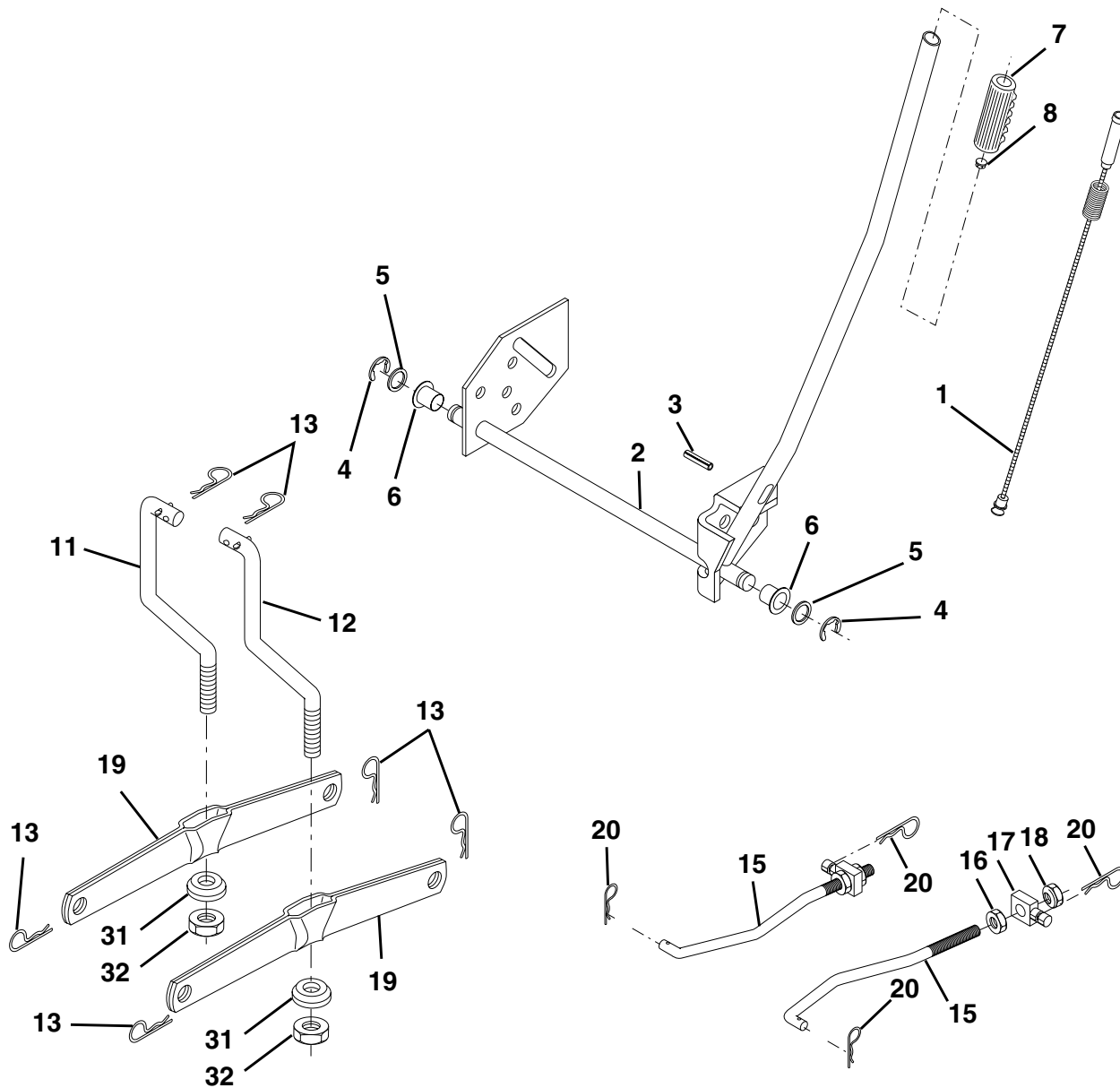
KEY NO.	PART NO.	DESCRIPTION
1	170551	Control Throt /Ch
2	17720410	Screw Hex Thd Cut 1/4-20x5/8 T
3	-----	Engine, Tecumseh Model OHV165 (Order parts from engine manufacturer)
4	137351	Muffler Tec 13.5/17HP LT
14	148456	Tube Drain Oil Easy
13	149272	Gasket Muffler
16	11050600	Washer Lock Ext Tooth 3/8
23	169837	Shield Browning/Debris Guard
29	137180	Arrestor Spark
31	174642	Tank Fuel 2.00 Fr
32	140527	Cap Asm Fule Top Vent N/Lany
33	123487X	Clamp Hose Blk
37	137040	Line Fuel 20"
38	148315	Plug Drain Oil Easy
44	17670412	Screw Hexwsh Thdrol 1/4-20x3/4
45	17000612	Screw Hex Wsh Thdrol 3/8-16 BI
46	19091416	Washer 9/32 X 7/8 X 16ga
62	10040500	Washer Lock Hvy Hlcl Spr 5/16
78	17060620	Screw 3/8-16x1-1/4
81	73510400	Nut Keps Hex 1/4-20 Unc
85	123528X	Bolt Hex Hd Phillips

NOTE: All component dimensions given in U.S. inches
1 inch = 25.4 mm

REPAIR PARTS

TRACTOR- -MODEL NO. 15-107R (MBA15T107RA)

MOWER LIFT



KEY NO.	PART NO.	DESCRIPTION
1	159460	Washer Asm Inner Spring W/Plunger
2	159471	Shaft Asm. Lift
3	105767X	Pin Groove
4	12000002	E Ring #5133-62
5	19211621	Washer 21/32 x 1 x 21 Ga.
6	120183X	Bearing Nylon
7	109413X	Grip Handle Bicycle
8	124526X	Button Plunger
11	165829	Link Asm Lift L.H.
12	165831	Link Asm Lift R.H.

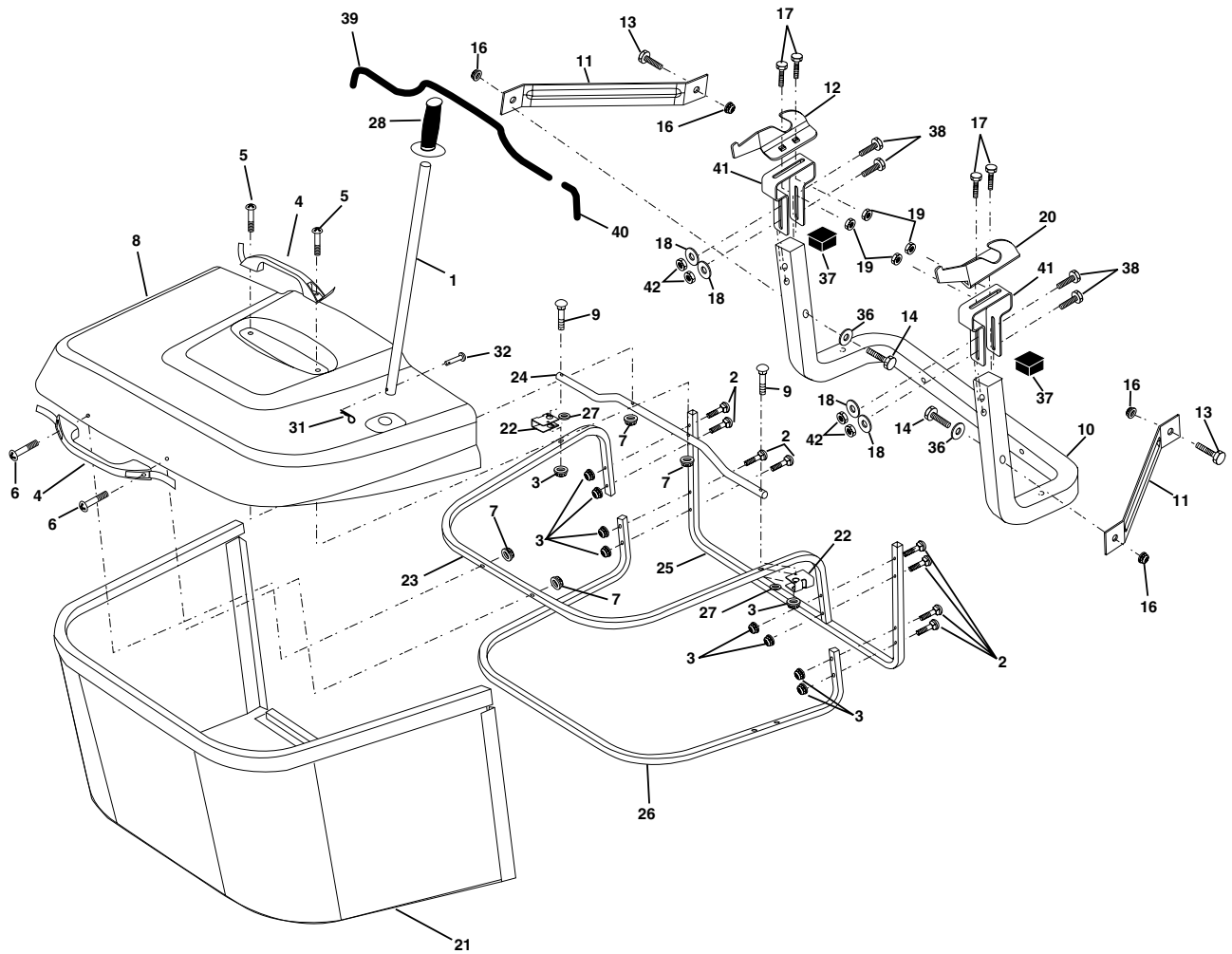
KEY NO.	PART NO.	DESCRIPTION
13	4939M	Retainer Spring
15	173288	Link Front
16	73350800	Nut Jam Hex 1/2-13 Unc
17	130171	Trunnion Blk Zinc
18	73800800	Nut Lock W/Wsh 1/2-13 Unc
19	139868	Arm Suspension Mower
20	163552	Retainer Spring
31	169865	Bearing, Pvt. Lift
32	73540600	Nut Crownlock 3/8-24

NOTE: All component dimensions given in U.S. inches
1 inch = 25.4 mm

REPAIR PARTS

TRACTOR- -MODEL NO. 15-107R (MBA15T107RA)

BAGGER



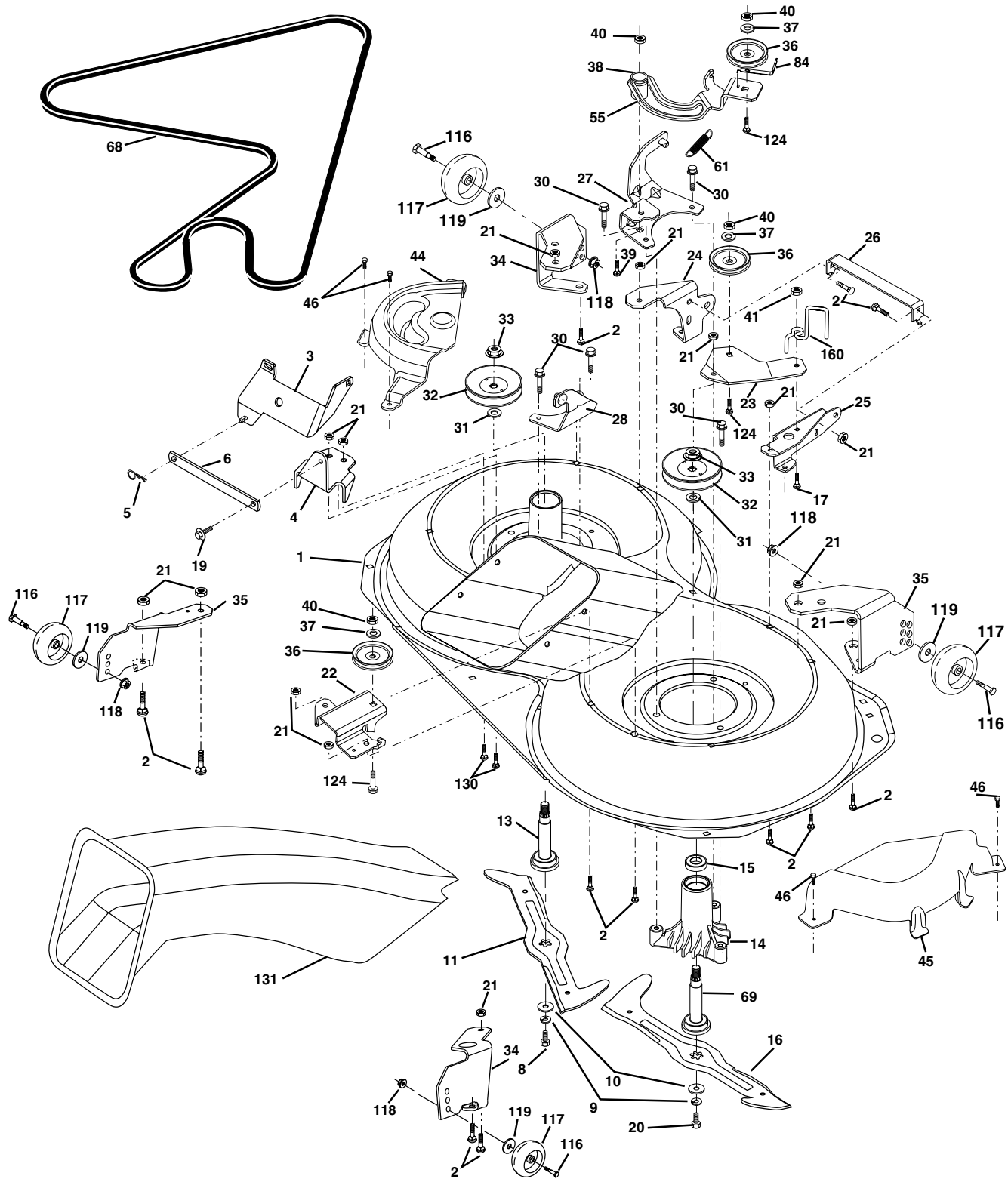
KEY NO.	PART NO.	DESCRIPTION	KEY NO.	PART NO.	DESCRIPTION
1	170690	Tube Handle Bagger CRD	20	169684	Bracket Horiz Adj Bggr Rh CRD
2	72140416	Bolt Carriage 1/4-20 x 2.0 Gr.5	21	165780	Bag Asm CRD
3	123976X	Nut Lock 1/4 Lge Flg Gr. 5 Zinc	22	165781	Bracket Side Bagger CRD
4	169916	Handle Bagger W/Lurs Blk CRD	23	165782	Tube Upper Bagger CRD
5	74981024	Screw Pan Head #10-24 x 1.50 Blk	24	165783	Tube Pivot Bagger CRD
6	74981032	Screw Pan Hd	25	165784	Tube Front Bagger CRD
7	73401000	Nut Wiz Lock Hex Serr/Hd 10-24	26	165785	Tube Lower Bagger CRD
8	165715X558	Cover Bagger Plastic CRD	27	169692	Bushing Snap Bagger CRD
9	72140418	Bolt Carriage 1/4-20 x 2.25d x Gr.5	28	170696	Grip Handle Black
10	169688	Tube Support Bagger CRD	31	4497H	Retainer Spring 1" Zinc/Cad
11	165719	Bracket Support Upper Bag CRD	32	126875X	Rivet Rd Hd Drilled 3/8 Dia
12	169685	Bracket Horiz Adj Bggr Lh CRD	36	19132016	Washer 13/32 x 1-1/4 x 16 Ga.
13	72110606	Bolt Rdhd Sht Sqnk 3/8-16 x 3/4	37	175401	Plug Support Bagger CRD
14	74520640	Bolt Hex 3/8-16 x 2-1/2 Gr. 5	38	72010520	Bolt 5/16-18 x 2-1/2
16	73900600	Nut Lock Flg 3/8-16 Unc	39	169999	Seal 26"
17	72140506	Bolt Rdhd Sht Sqnk 5/16 -18 Unc x 3/4	40	170000	Seal 7"
18	19111216	Washer 11/32 x 3/4 x 16 Ga.	41	169683	Bracket Vert Adj Bagger CRD
19	73900500	Nut Lock Hex Flange 5/16-18	42	73800500	Nut Lock Hex W/Ins 5/16-18 Unc PI

NOTE: All component dimensions given in U.S. inches
1 inch = 25.4 mm

REPAIR PARTS

TRACTOR- -MODEL NO. 15-107R (MBA15T107RA)

MOWER



REPAIR PARTS

TRACTOR- -MODEL NO. 15-107R (MBA15T107RA)

MOWER

KEY NO.	PART NO.	DESCRIPTION	KEY NO.	PART NO.	DESCRIPTION
1	169160	Housing Asm. Mower	40	73680600	Nut Crownlock 3/8-16 Unc
2	72140506	Bolt Rdhd Sqnk 5/16-18 Unc x 3/4	41	73900600	Nut Lock Flg 3/8-16 Unc
3	165569	Bracket Asm. S-Bar Chass	44	169180	Cover Mandrel Lh
4	169167	Bracket Bar Sway Deck	45	169179	Cover Mandrel Rh
5	4939M	Retainer Spring	46	137729	Screw Thd Roll 1/4-20 x 5/8
6	165557	Bar Sway	55	169849	Arm Idler 107 CRD
8	850857	Bolt 3/8-24 x 1.25 Gr8 Patched	61	175159	Spring Tension Belt
9	10030600	Washer Lock Hvy 3/8 Unplated	67	106932X	Knob Rd 3/8-16 Plstc Thds Blk
10	140296	Washer Hard Blade Mower vented	68	169178	Hex-Belt Mower
11	175450	Blade 3-1 Lh	69	165482	Shaft Asm W/Lwr Brg Rh Thd CRD
13	137645	Shaft Asm. W/Lower Bearing	84	156085	Keeper Belt Idler
14	128774	Housing Mandrel Vented (Machd)	116	137644	Bolt Shoulder
15	110485X	Bearing Ball Mandrel	117	133957	Wheel Gage Donut Wide
16	175451	Blade 3-1 Rh	118	73930600	Nut Centerlock 3/8-16 Unc
17	72140610	Bolt Carriage 3/8-16 x 1-1/4	119	19121414	Washer 3/8 x 7/8 x 14 Ga.
19	132827	Bolt Shoulder 5/16-18 Thd Form	124	72110612	Bolt Carr Sh 3/8-16 x 1-1/2 Gr5
20	165484	Bolt 3/8-24 x 1.25 Gr8 Ptch Lhthd	130	72110506	Bolt Rdhd sqnk 5/16-18 Unc x 3/4
21	73680500	Nut Crown Lock 5/16-18	131	165661	Chute Bagger CRD
22	169165	Bracket Idler RR	151	169670	Bracket Clutch Cable
23	169166	Bracket Idler RF	152	176074	Cable Clutch CRD Service
24	169170	Bracket Suspension LF	153	169674	Washer Flat 3/8" Type B
25	169171	Bracket Suspension RF	154	169675	Spring Retainer
26	165237	Brace Support Susp Frt CRD	155	169671	Spring Retention Lvr Cltch Cab
27	169172	Bracket Asm. Susp RR	156	169672	Spacer Clutch Cable
28	169168	Bracket Asm. Susp LR	157	169669	Rod Clutch Cable 3/8"
30	157722	Screw Thd Rolling Washer Head	158	17720410	Screw Hex Thd Cut 1/4-20 x 5/8
31	129963	Washer Spacer Mower Vented	160	175160	Guide Belt CRD
32	175707	Mandrel Pulleys	--	130794	Mandrel Asm Service
33	137266	Nut Flg Top Lock Cntr B 9/16	--	165579	Mandrel Asm CRD Lh Threads SVC
34	169174	Bracket Gauge Wheel Lf	--	175842	Deck Mower Complete
35	169175	Bracket Gauge Wheel Rf			
36	146763	Pulley Idler V-Groove Dim 4.25			
37	19131316	Washer 11/32 x 13/16 x 16 Ga			
38	169851	Spacer Hub Arm Idler 107 CRD			
39	72110622	Bolt Crownlock 3/8-16 Unc			

NOTE: All component dimensions given in U.S. inches
1 inch = 25.4 mm