



# **REPAIR PARTS MANUAL**

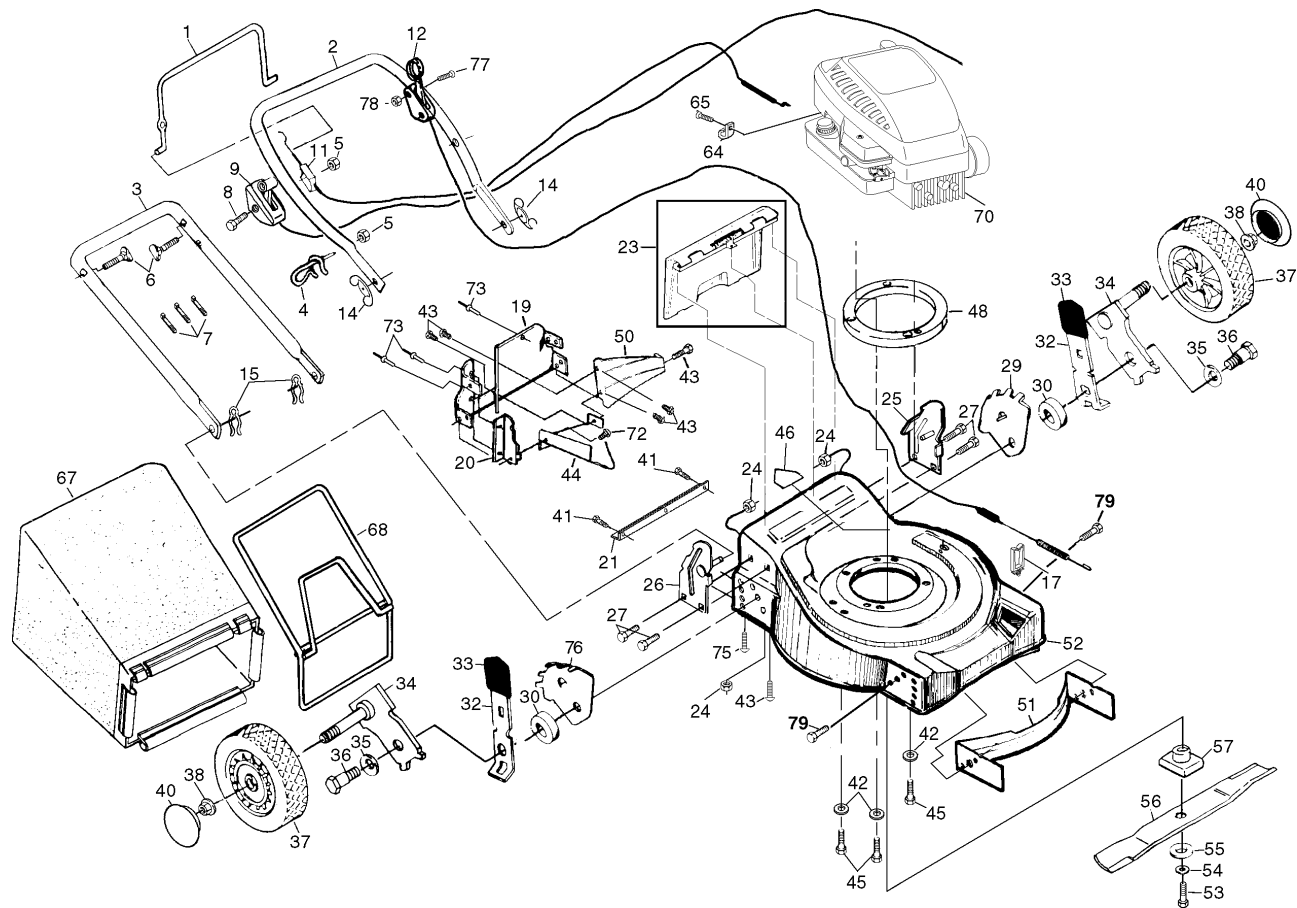
## **MODEL NO. RE2C671F**

### **Rotary Lawn Mower**

---

# **Rally**

# ROTARY LAWN MOWER -- MODEL NUMBER RE2C671F



# 

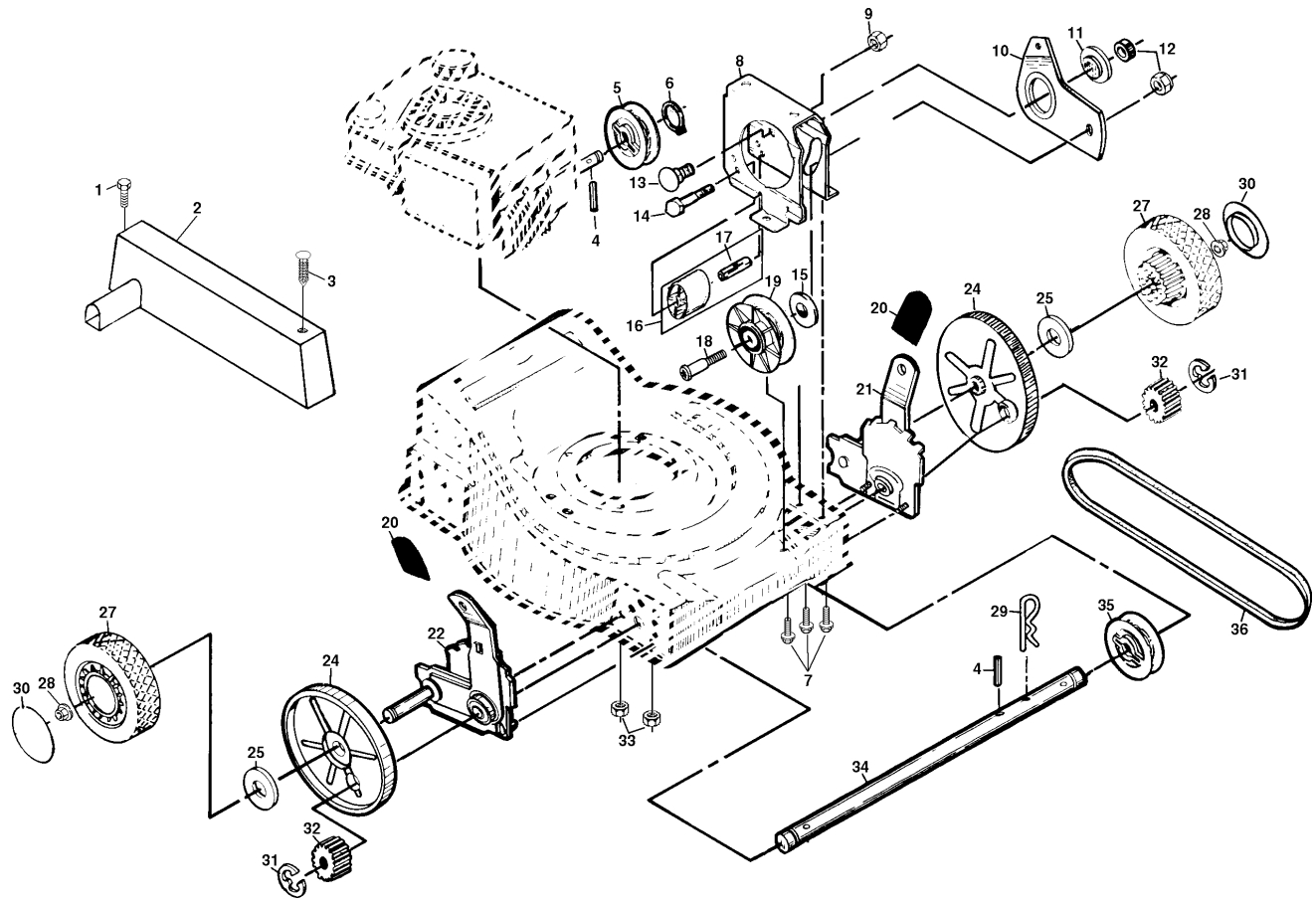
KEY NO.	PART NO.	DESCRIPTION
1	<b>146771</b>	Control Bar
2	<b>166860X479</b>	Upper Handle
3	<b>151590X479</b>	Lower Handle
4	132001	Rope Guide
5	63601	Locknut 1/4-20
6	131959	Handle Bolt
7	66426	Wire Tie
8	144929	Hex Washer Head Screw 1/4-20 x 2.12
9	<b>166971</b>	Throttle Control
11	<b>701181</b>	Engine Zone Control Cable
12	<b>146392</b>	Drive Control
14	128638	Wing Nut
15	51793	Hairpin Cotter
17	145669	Drive Cable Guide
19	156445X479	Back Plate
20	700363X479	Side Baffle
21	146143X479	Foot Guard
23	147613	Rear Door Assembly Kit
24	751592	Locknut 3/8-16
25	151589X479	Handle Bracket Assembly (Left)
26	151588X479	Handle Bracket Assembly (Right)
27	150078	Screw 5/16-18 x 3/4
29	134340	Wheel Adjusting Bracket (Left)
30	146630	Spacer
32	850862X004	Selector Spring
33	87877	Selector Knob
34	145937X004	Axle Arm Assembly
35	62335	Belleville Washer
36	142748	Shoulder Bolt 3/8-16
37	148438	Wheel & Tire Assembly
38	83923	Flanged Locknut
40	77400	Hubcap
41	146694	Screw

KEY NO.	PART NO.	DESCRIPTION
42	53998	Flat Washer
43	54583	Hex Tapping Screw 1/4-20 x 1/2
44	133188X479	Discharge Baffle
45	850999	Hex Head Thread Rolling Screw 3/8-16 x 2
46	145494	Danger Decal
48	850988	Engine Spacer
50	169207X479	Rear Baffle
51	170635	Front Baffle Kit
52	170677	Housing Assembly (Incl. Ref. #46)
53	851084	Hex Head Bolt 3/8-24 x 1-3/8 Grd. 8
54	850263	Helical Lock Washer
55	851074	Hardened Washer
56	850972	20" Blade
57	851514	Blade Adapter
64	213146	Cable Clamp
65	83816	Screw #10 x 5/8
67	149619	Grass Bag
68	149555	Catcher Frame
70	-----	Engine - Briggs & Stratton - Model No. 10A982
		Order parts from engine manufacturer
72	150050	Self Tapping Screw #10-24 x 1/2
73	128415	Pop Rivet
75	88652	Screw (not shown)
76	134341	Wheel Adjusting Bracket (Right)
77	158755	Screw
78	751152	Nut
79	17600406	Screw
80	161057	Warning Decal (Not Shown)
--	<b>177012</b>	Replacement Parts Manual
--	<b>173222</b>	Operator's Manual(Euro)
--	<b>173225</b>	Operator's Manual(Scand)

**NOTE:** All component dimensions given in U.S. inches

1 inch = 25.4 mm

ROTARY LAWN MOWER - - MODEL NUMBER RE2C671F



ROTARY LAWN MOWER - - MODEL NUMBER RE2C671F

KEY NO.	PART NO.	DESCRIPTION	KEY NO.	PART NO.	DESCRIPTION
1	141912	Hex Washer Head Screw #10-24 x 1/2	19	88516	Idler Pulley
2	154049	Drive Cover	20	87877	Selector Knob
3	701477	Push Fastener	21	152465	Adjuster Assembly (Left)
4	164795	Drive Pawl	22	152463	Adjuster Assembly (Right)
5	88043	Drive Pulley	24	88080	Dust Cover
6	12000030	Retaining Ring	25	67725	Washer
7	54583	Screw 1/4-20 x 1/2	27	750124	Wheel & Tire Assembly
8	851947X004	Clutch Frame	28	145212	Flanged Locknut
9	50962	Locknut 1/4-20	29	85179	Retainer Clip
10	702631X004	Clutch Lever	30	77400	Hubcap
11	88067	Clutch Lever Spacer	31	12000058	E-Ring
12	750253	Locknut 5/16-18	32	137054	Pinion
13	72070504	Carriage Bolt 5/16-18 x 1/2	33	63601	Locknut 1/4-20
14	74350424	Hex Head Screw 1/4-20 x 1-1/2	34	700537	Drive Shaft
15	88069	Spacer	35	88082	Driven Pulley
16	48160	Idler Assembly (Includes Key No. 17)	36	111924X	Drive Belt
17	88576	Idler Spacer			
18	88517	Shoulder Bolt 5/16-18 x 1-3/8			

NOTE: All component dimensions given in U.S. inches  
 1 inch = 25.4 mm