

REPAIR PARTS MANUAL
MODEL NO. REN12597 (96011025505)
Lawn Tractor

HOW TO USE THIS MANUAL

This manual is designed to provide the customer with a means to identify the parts on his/her tractor when ordering repair parts. The illustrations may or may not represent the actual assemblies; therefore, it is not recommended to use this manual as a guide to assemble or disassemble the tractor. Some hardware and parts are drawn larger in order to more readily identify them.

Each tractor has its own model number.

The model number for your tractor can be found on the fender under the seat.

When ordering parts, always give the following information:

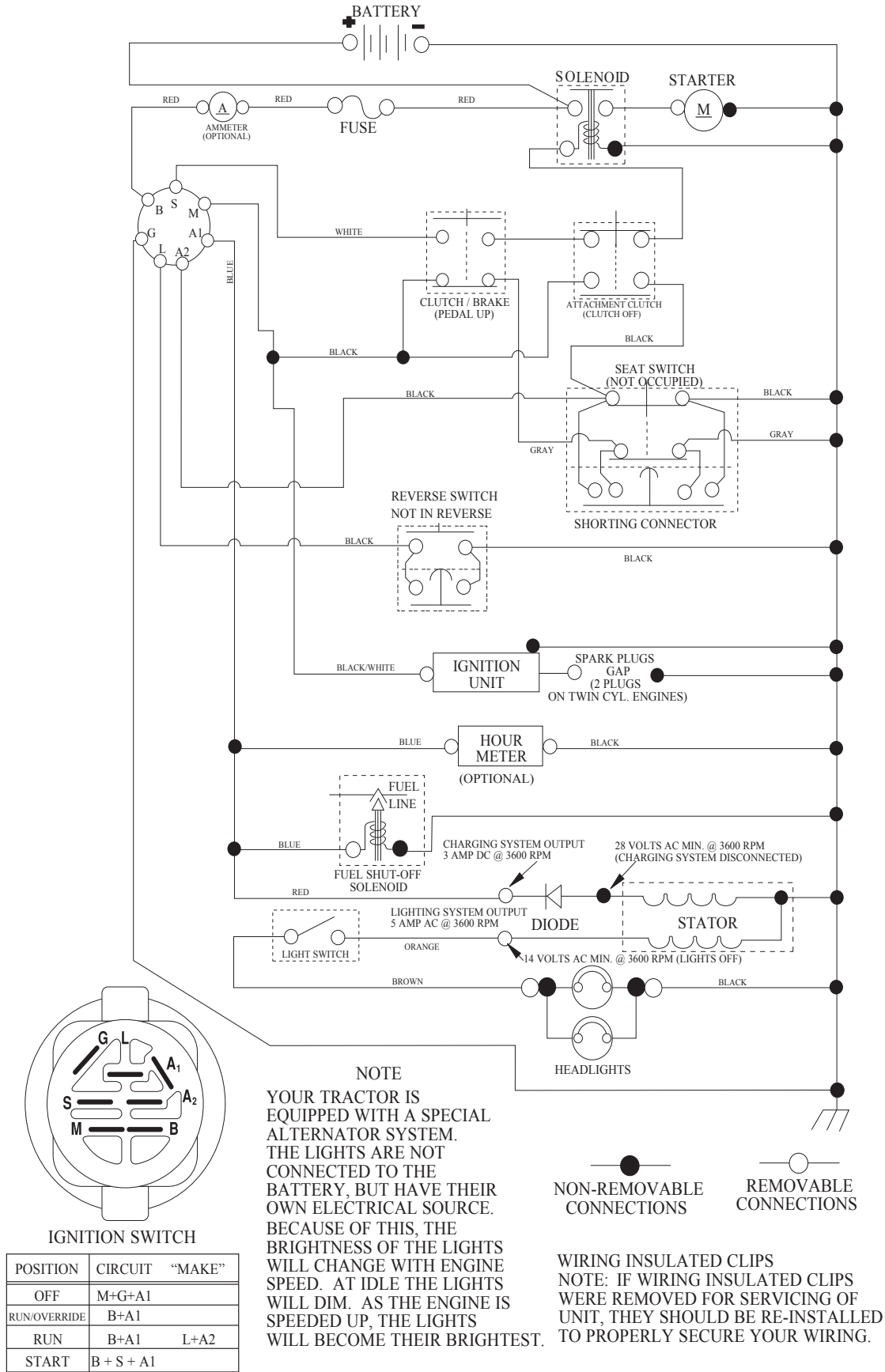
- Product - "Lawn Tractor"
- Model Number - REN12597 (96011025505)
- Part Number
- Part Description

TABLE OF CONTENTS

| | |
|------------------------------------|--------------|
| SCHEMATIC | 3 |
| ELECTRICAL..... | 4-5 |
| CHASSIS AND ENCLOSURES..... | 6-7 |
| DRIVE..... | 8-9 |
| ENGINE..... | 10-11 |
| STEERING WHEEL | 12-13 |
| SEAT | 14 |
| DECALS..... | 15 |
| MOWER DECK | 16-17 |
| MOWER LIFT..... | 18 |

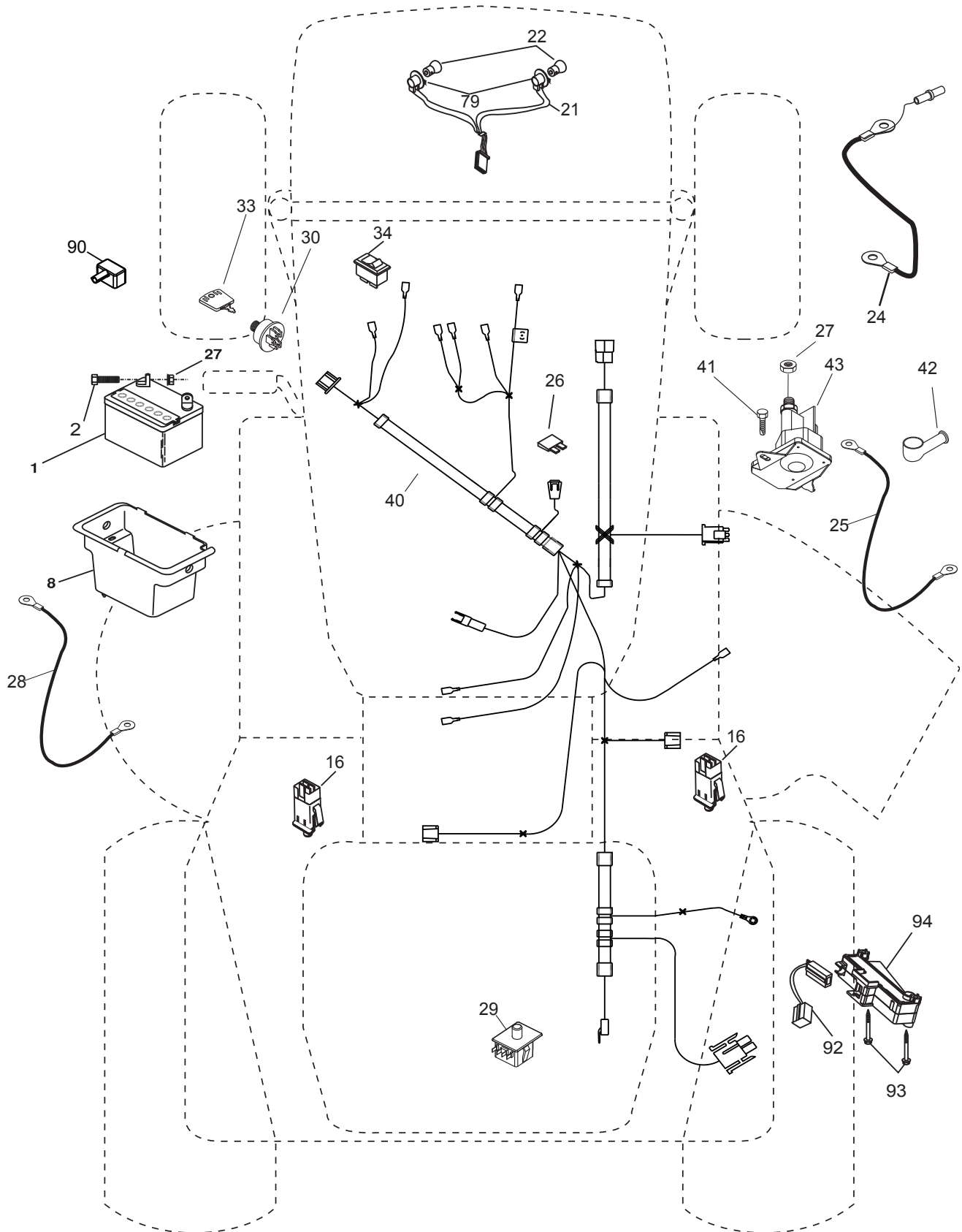
TRACTOR - MODEL NO. REN12597 (96011025505), PRODUCT NO. 960 11 02-55 SCHEMATIC

SCH03



**TRACTOR - MODEL NO. REN12597 (96011025505), PRODUCT NO. 960 11 02-55
ELECTRICAL**

L02



**TRACTOR - MODEL NO. REN12597 (96011025505), PRODUCT NO. 960 11 02-55
ELECTRICAL**

| KEY NO. | PART NO. | DESCRIPTION |
|----------------|---------------------|-------------------------------|
| 1 | 532 16 34-65 | Battery 12 Volt 25 AMP |
| 2 | 874 76 04-12 | Bolt Hex Hd 1/4-20 unc x 3/4 |
| 8 | 532 17 66-89 | Box Battery |
| 16 | 532 17 61-38 | Switch Interlock Push-In |
| 21 | 532 18 37-59 | Harness Asm. |
| 22 | 532 00 41-52 | Bulb Light |
| 24 | 532 42 12-99 | Cable Battery 6 Ga. 11" Red |
| 25 | 532 42 12-97 | Cable Battery 44" 8 Ga. |
| 26 | 532 17 51-58 | Fuse 20 AMP |
| 27 | 873 51 04-00 | Nut Keps Hex 1/4-20 unc |
| 28 | 532 42 12-98 | Cable Ground 6 Ga. 12" Black |
| 29 | 532 19 27-49 | Switch Seat |
| 30 | 532 19 33-50 | Switch Ign |
| 33 | 532 41 19-35 | Key/Chain |
| 34 | 532 11 07-12 | Switch Light |
| 40 | 532 19 74-28 | Harness Ign. |
| 41 | 871 11 04-08 | Bolt Blk Fin Hex 1/4-20 x 1/2 |
| 42 | 532 13 15-63 | Cover Terminal Red |
| 43 | 532 19 25-07 | Solenoid |
| 79 | 532 17 52-42 | Socket Asm. Bulb |
| 90 | 532 18 04-49 | Cover Terminal Battery |
| 92 | 532 19 66-15 | Harness Pigtail Console ROS |
| 93 | 532 19 25-40 | Screw Plastite 10-14 x 2.0 |
| 94 | 532 19 18-34 | Module Reverse ROS |

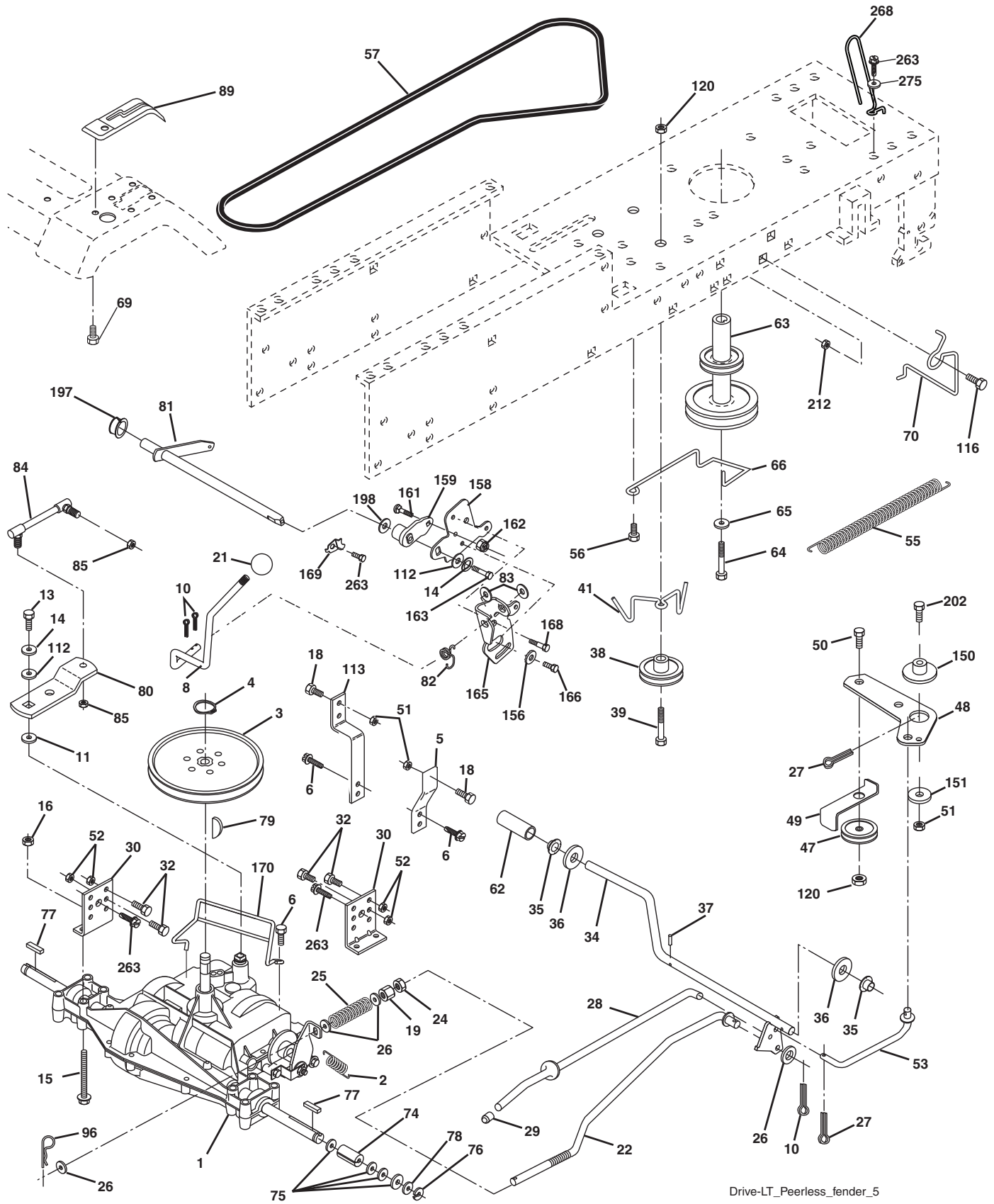
NOTE: All component dimensions given in U.S. inches.
1 inch = 25.4 mm.

**TRACTOR - MODEL NO. REN12597 (96011025505), PRODUCT NO. 960 11 02-55
CHASSIS AND ENCLOSURES**

| KEY NO. | PART NO. | DESCRIPTION |
|----------------|-----------------|------------------------------------|
| 1 | 532 17 46-20 | Chassis Stamping |
| 2 | 532 17 65-54 | Drawbar |
| 5 | 532 15 52-72 | Bumper Hood/Dash |
| 6 | 532 18 44-19 | Saddle, Flat |
| 8 | 532 15 51-38 | Clip Retainer |
| 9 | 532 19 46-88 | Dash P/L |
| 10 | 872 14 06-08 | Bolt Carriage 3/8-16 x 1 |
| 11 | 532 17 49-96 | Panel Dash LH |
| 13 | 532 18 69-52 | Panel Dash RH |
| 15 | 874 18 05-12 | Screw Mach. TRHD 5/16-18 unc x 3/4 |
| 16 | 873 51 05-00 | Nut Keps 5/16-18unc |
| 17 | 532 18 67-07 | Hood |
| 18 | 532 18 49-21 | Bumper Hood |
| 24 | 874 78 06-16 | Bolt Fin Hex 3/8-16unc x 1 Gr. 5 |
| 25 | 819 13 13-12 | Washer 13/32 x 13/16 x 12 Ga |
| 26 | 873 80 06-00 | Nut Lock Hex w/Ins 3/8-16 unc |
| 28 | 532 18 38-26 | Grille |
| 29 | 532 18 98-37 | Lens Grille |
| 30 | 532 19 58-55 | Fender |
| 31 | 532 13 66-19 | Bracket Support Fender |
| 33 | 532 18 11-93 | Footrest LH |
| 34 | 532 18 11-94 | Footrest RH |
| 35 | 872 11 06-06 | Bolt RDHD SHT SQNK 3/8-16 x 3/4 |
| 37 | 817 49 05-08 | Screw Thdrol 6/16-18 x 1/2 TYT |
| 38 | 532 17 57-10 | Bracket, Asm. Pivot, Mower Rear |
| 39 | 532 40 78-07 | Bracket Pivot |
| 145 | 532 40 91-67 | Rod Pivot Hood |
| 205 | 817 49 06-08 | Screw Thdrol 3/8-16 x 1/2 |
| 206 | 532 17 01-65 | Bolt Shoulder 5/16-18 TT |
| 208 | 817 67 06-08 | Screw Thdrol 3/8-16 x 1/2 |
| 209 | 817 00 06-12 | Screw Thdr 3/8-16 x 3/4 |
| 212 | 532 18 38-23 | Insert Lens |
| 278 | 532 41 63-58 | Screw #10 x 0.750 |
| -- | 532 00 54-79 | Plug Button |

NOTE: All component dimensions given in U.S. inches
1 inch = 25.4 mm

**TRACTOR - MODEL NO. REN12597 (96011025505), PRODUCT NO. 960 11 02-55
DRIVE**



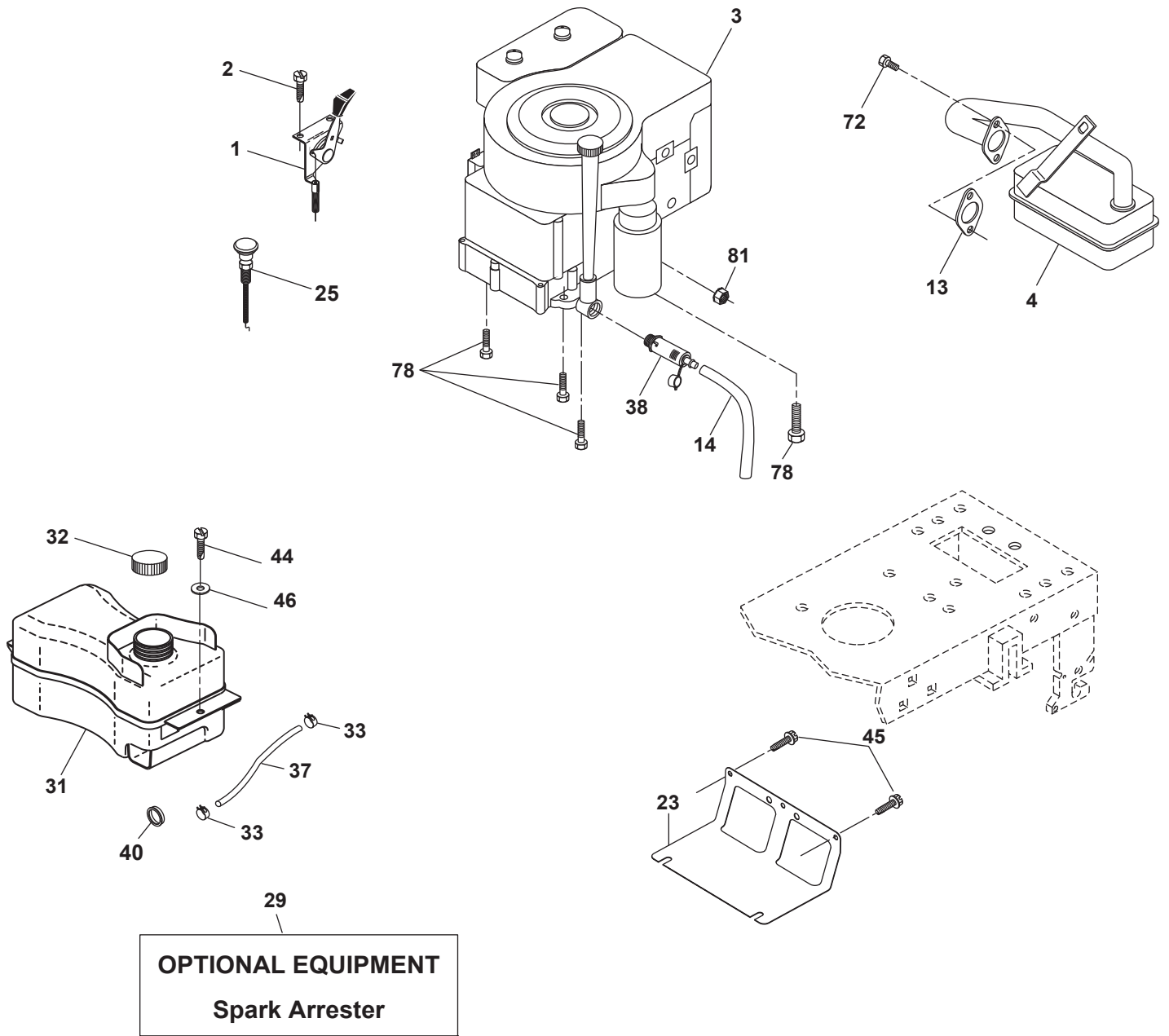
Drive-LT_Peerless_fender_5

**TRACTOR - MODEL NO. REN12597 (96011025505), PRODUCT NO. 960 11 02-55
DRIVE**

| KEY NO. | PART NO. | DESCRIPTION | KEY NO. | PART NO. | DESCRIPTION |
|---------|--------------|------------------------------------|---------|--------------|-----------------------------------|
| 1 | ----- | Transaxle, Peerless 205-544C | 66 | 532 15 47-78 | Keeper Belt Engine Foolproof |
| 2 | 532 14 66-82 | Spring Return Brake T/a Zinc | 69 | 532 14 24-32 | Screw Hex Wsh Hi-Lo 1/4 X 1/4 unc |
| 3 | 532 12 36-66 | Pulley Transaxle 18" Tires | 70 | 532 13 46-83 | Guide Belt Mower Drive RH |
| 4 | 812 00 00-28 | Ring Retainer # 5100-62 | 74 | 532 13 70-57 | Spacer Axle |
| 5 | 532 12 15-20 | Strap Torque 30 Degrees | 75 | 532 12 17-49 | Washer 25/32 x 1 1/4 x 16 Ga. |
| 6 | 817 06 05-12 | Screw Thdrol 5/16-18 x 3/4 TYT | 76 | 812 00 00-01 | E-ring #5133-75 |
| 8 | 532 19 27-06 | Rod Shift | 77 | 532 12 35-83 | Key Square 2 0 x 1845/ 1865 |
| 10 | 876 02 04-16 | Pin Cotter 1/8 x 1 Cad | 78 | 532 12 17-48 | Washer 25/32 x 1-5/8 x 16 Ga. |
| 11 | 532 10 57-01 | Washer Plate Shf 388 Sq Hole | 79 | 532 12 50-96 | Key Woodruff #9 3/16 x 3/4 |
| 13 | 874 55 04-12 | Bolt 1/4-28 unf Gr. 8 w/Patch | 80 | 532 13 14-86 | Arm Shift Trans |
| 14 | 810 04 04-00 | Washer Lock Hvy Helical 1/4 | 81 | 532 16 55-94 | Shaft Asm. Cross Taper |
| 15 | 874 49 05-44 | Bolt 5/16-18 Gr. 5 | 82 | 532 16 57-11 | Spring Torsion |
| 16 | 873 80 05-00 | Nut Lock Hex w/lns 5/16-18 | 83 | 819 17 12-16 | Washer 17/32 x 3/4 x 16 Ga. |
| 18 | 874 78 06-16 | Bolt, Fin Hex 3/8-16 unc x 1 Gr. 5 | 84 | 532 16 62-28 | Link Trans |
| 19 | 873 80 06-00 | Nut Lock 3/8-16 unc | 85 | 532 15 03-60 | Nut Lock Center 1/4-28 |
| 21 | 532 10 69-33 | Knob | 89 | 532 19 58-61 | Console Shift |
| 22 | 532 13 08-04 | Rod Brake Blk Zinc 26 840 | 96 | 532 12 47-88 | Retainer Spring 1" |
| 24 | 873 35 06-00 | Nut Hex Jam 3/8-16 unc | 112 | 819 09 12-10 | Washer 9/32 x 3/4 x 10 Ga. |
| 25 | 532 10 68-88 | Spring Rod Brake 2 00 Zinc | 113 | 532 12 72-85 | Strap Torque LT |
| 26 | 819 13 13-16 | Washer 13/32 x 13/16 x 16 Ga | 116 | 872 14 06-08 | Bolt Rdhd Sq Neck 3/8-16 x 1 |
| 27 | 876 02 04-12 | Pin Cotter 1/8 x 3/4 Cad | 120 | 873 90 06-00 | Nut Lock Flg. 3/8-16 |
| 28 | 532 17 57-65 | Rod Brake Parking LT/YT | 150 | 532 17 54-56 | Spacer Retainer |
| 29 | 532 07 16-73 | Cap Brake Parking Black | 151 | 819 13 32-10 | Washer 13/32 x 2 x 10 Ga. |
| 30 | 532 17 49-73 | Bracket Mtg Transaxle | 156 | 532 16 60-02 | Washer Srrtd 5/16ID x 1 x .125 |
| 32 | 874 76 05-12 | Bolt Hex Hd 5/16-18 unc x 3/4 | 158 | 532 16 55-89 | Bracket Shift Mount |
| 34 | 532 17 55-78 | Shaft Asm Pedal Foot | 159 | 532 18 39-00 | Hub Shift |
| 35 | 532 12 01-83 | Bearing Nylon Blk 629 Id | 161 | 872 14 04-06 | Bolt RDHD SQNK 1/4-20 x 3/4 Gr. 5 |
| 36 | 819 21 16-16 | Washer 21/32 x 1 x 16 Ga. | 162 | 873 68 04-00 | Nut Crownlock 1/4-20 unc |
| 37 | 532 12 49-63 | Pin Roll 3/16 x 1" | 163 | 874 78 04-16 | Bolt Hex Fin 1/4-20 unc x 1 Gr. 5 |
| 38 | 532 17 91-14 | Pulley Composite | 165 | 532 16 56-23 | Bracket Pivot Lever |
| 39 | 872 11 06-22 | Bolt 3/8-16 x 2-3/4 Gr. 5 | 166 | 817 49 05-10 | Screw 5/16-18 x 5/8 |
| 41 | 532 17 55-56 | Keeper Belt Idler Flat | 168 | 532 16 54-92 | Bolt Shoulder 5/16-18 x .561 |
| 47 | 532 12 77-83 | Pulley Idler V Groove Plastic | 169 | 532 16 55-81 | Plate Fastening |
| 48 | 532 15 44-07 | Bellcrank Clutch Grnd Drv Stl | 170 | 532 18 74-14 | Keeper Belt T/A |
| 49 | 532 12 32-05 | Retainer Belt Style Spring | 197 | 532 16 96-13 | Nyliner Smap-in 5/8 |
| 50 | 872 11 06-12 | Bolt Carr SH 3/8-16 x 1-1/2 Gr. 5 | 198 | 532 16 98-45 | Washer Nylon |
| 51 | 873 68 06-00 | Nut Crownlock 3/8-16 unc | 202 | 872 11 06-14 | Bolt 3/8-16 x 1-3/4 Gr. 5 |
| 52 | 873 68 05-00 | Nut Crownlock 5/16-18 unc | 212 | 532 14 52-12 | Nut Hex Flg Lock |
| 53 | 532 19 96-52 | Link Clutch | 263 | 817 00 06-12 | Screw Hex Wsh THDR 3/8-16 x 3/4 |
| 55 | 532 10 57-09 | Spring Return Clutch 6 75 | 268 | 532 18 24-02 | Guard Muffler |
| 56 | 817 06 06-20 | Screw 3/8-16 x 1-1/4 | 275 | 819 13 16-14 | Washer 13/32 x 1 x 14 Ga. |
| 57 | 532 13 82-55 | V-Belt Ground Drive | | | |
| 62 | 532 12 48-72 | Cover Pedal | | | |
| 63 | 532 17 54-10 | Engine Pulley | | | |
| 64 | 532 17 39-37 | Bolt Hex | | | |
| 65 | 810 04 07-00 | Washer Lock Hvy Hlcl Spr 7/16 | | | |

NOTE: All component dimensions given in U.S. inches
1 inch = 25.4 mm

**TRACTOR - MODEL NO. REN12597 (96011025505), PRODUCT NO. 960 11 02-55
ENGINE**



engine-bs.1cyl_38

**TRACTOR - MODEL NO. REN12597 (96011025505), PRODUCT NO. 960 11 02-55
ENGINE**

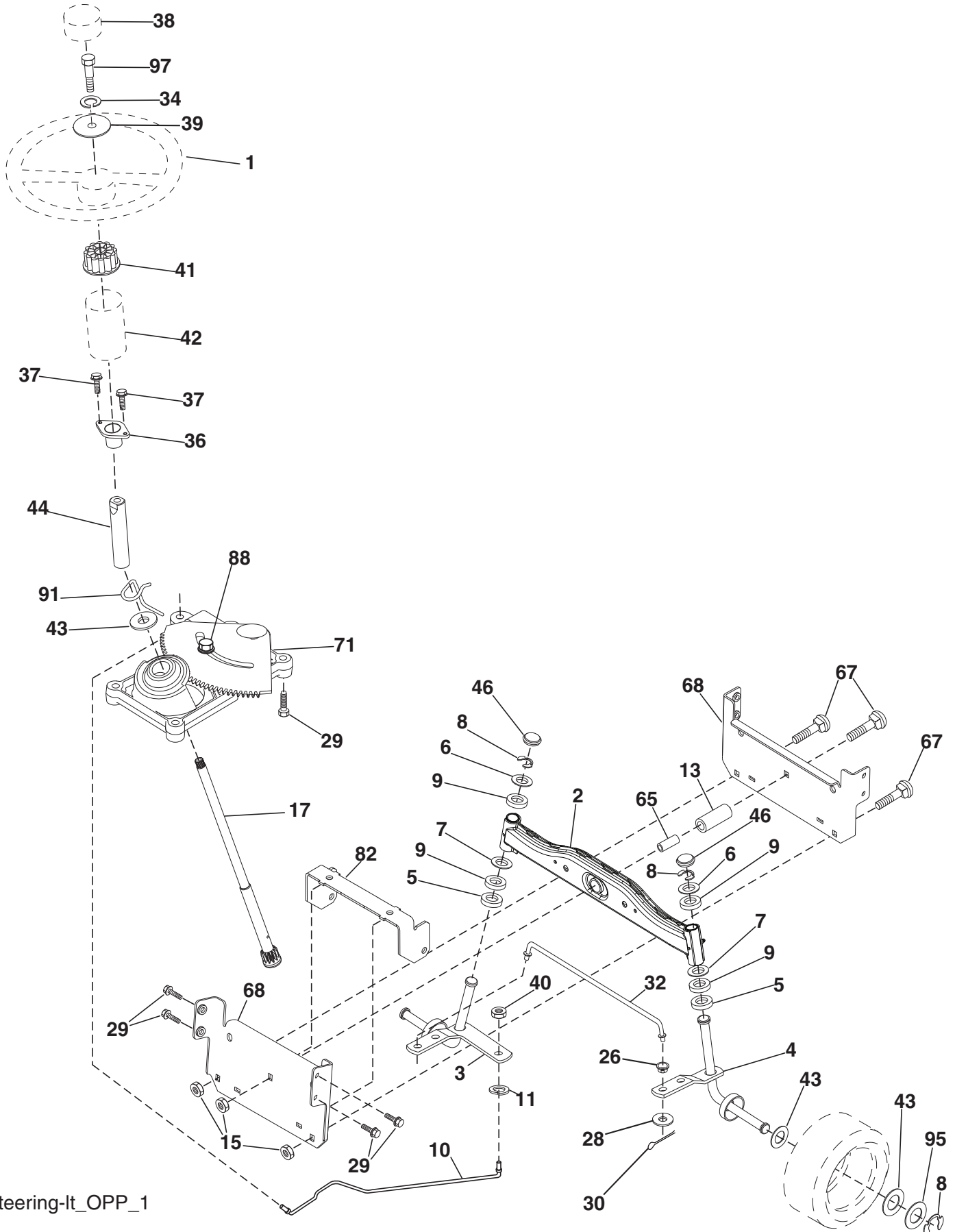
| KEY NO. | PART NO. | DESCRIPTION |
|----------------|-----------------|-----------------------------------|
| 1 | 532 17 05-51 | Control Throttle |
| 2 | 817 72 04-08 | Screw Hex Thd Cut 1/4-20 x 1/2 |
| 3 | ----- | Engine B&S Model No. 219807 |
| 4 | 532 17 97-58 | Muffler LT B&S |
| 13 | 532 16 52-91 | Gasket |
| 14 | 532 14 84-56 | Tube Drain Oil Easy |
| 23 | 532 16 98-37 | Shield Brn/Dbr Guard |
| 25 | 532 19 06-95 | Control Choke |
| 29 | 532 13 71-80 | Kit Spark Arrester (Flat Scrn) |
| 31 | 532 40 75-16 | Tank Fuel Front |
| 32 | 532 19 77-25 | Cap Asm Fuel |
| 33 | 532 12 34-87 | Clamp Hose Black |
| 37 | 532 13 70-40 | Line Fuel 20" |
| 38 | 532 18 16-54 | Plug Drain Oil Easy |
| 40 | 532 12 40-28 | Bushing Snap Nyl Blk Fuel Line |
| 44 | 817 67 04-12 | Screw Hexwsh Thdrol 1/4-20 x 3/4 |
| 45 | 817 00 06-12 | Screw Hex Wsh Thdrol 3/8-16 x 3/4 |
| 46 | 819 09 14-16 | Washer 9/32 x 7/8 x 16 Ga. |
| 72 | 532 19 23-34 | Screw Socket HD 5/16-18 x 3/4 |
| 78 | 817 06 06-20 | Screw 3/8-16 x 1-1/4 |
| 81 | 873 51 04-00 | Nut 1/4-20 |

NOTE: All component dimensions given in U.S. inches
1 inch = 25.4 mm
For engine service and replacement parts, call the toll
free number for your engine manufacturer listed below:
Briggs & Stratton 1-800-233-3723

Engine Power Rating Information

The gross power rating for individual gas engine models is labeled in accordance with SAE (Society of Automotive Engineers) code J11940 (Small Engine Power & Torque Rating Procedure), and rating performance has been obtained and corrected in accordance with SAE J1995 (Revision 2002-5). Actual gross engine power will be lower and is affected by, among other things, ambient operating conditions and engine-to-engine variability. Given both the wide array of products on which engines are placed and the variety of environmental issues applicable to operating the equipment, the gas engine will not develop the rated gross power when used in a given piece of power equipment (actual "on-site" or net horsepower). This difference is due to a variety of factors including, but not limited to, accessories (air cleaner, exhaust, charging, cooling, carburetor, fuel pump, etc.), application limitations, ambient operating conditions (temperature, humidity, altitude), and engine-to-engine variability. Due to manufacturing and capacity limitations, Briggs & Stratton may substitute an engine of higher rated power for this Series engine.

TRACTOR - MODEL NO. REN12597 (96011025505), PRODUCT NO. 960 11 02-55
STEERING ASSEMBLY



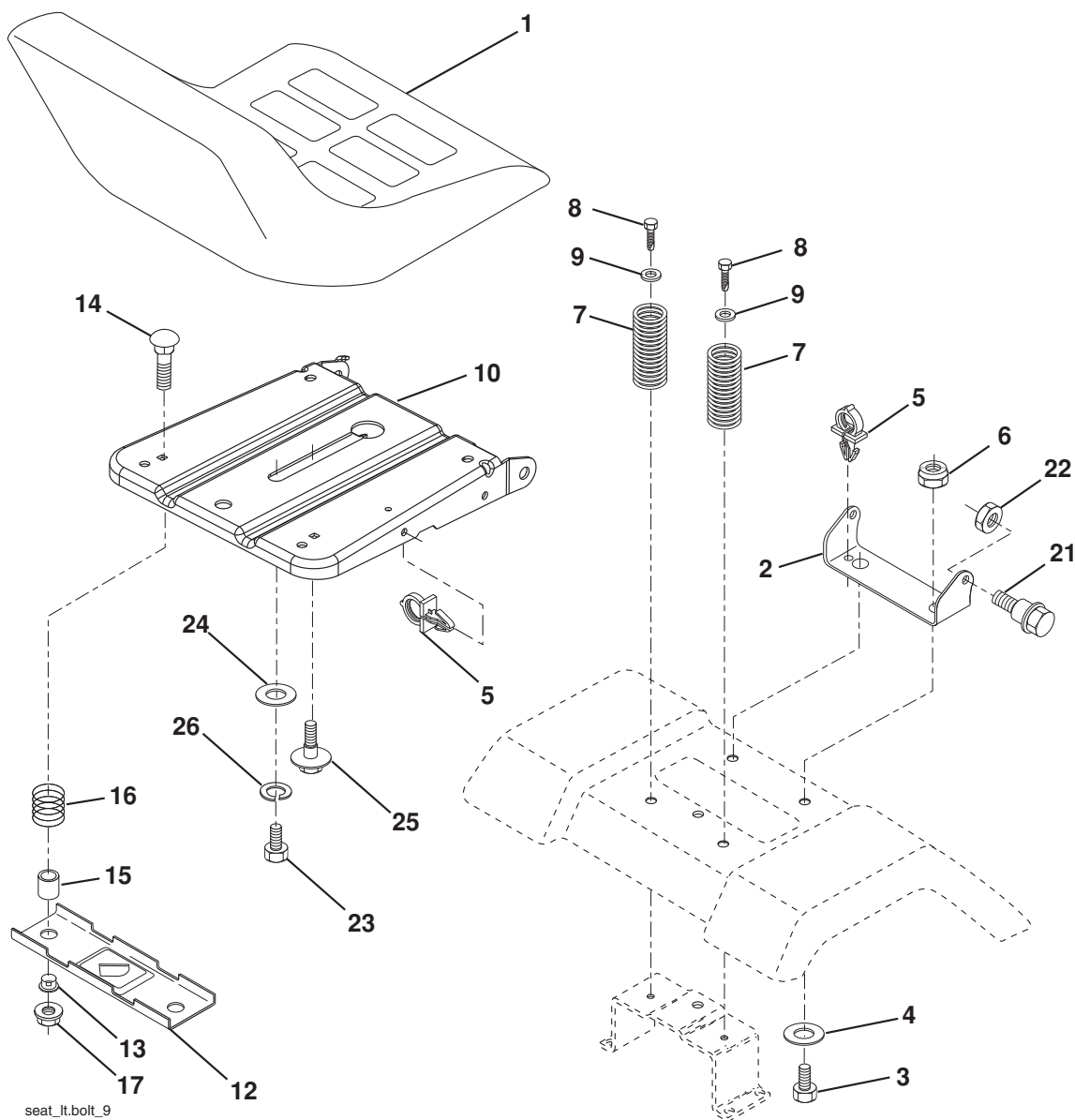
Steering-It_OPP_1

**TRACTOR - MODEL NO. REN12597 (96011025505), PRODUCT NO. 960 11 02-55
STEERING ASSEMBLY**

| KEY NO. | PART NO. | DESCRIPTION |
|----------------|-----------------|------------------------------------|
| 1 | 532 18 67-80 | Wheel Steering |
| 2 | 532 41 81-68 | Axle Asm |
| 3 | 532 16 98-40 | Spindle Asm LH |
| 4 | 532 16 98-39 | Spindle Asm RH |
| 5 | 532 12 49-31 | Bearing Race Thrust Harden |
| 6 | 532 12 17-48 | Washer 25/32 x 1-5/8 x 16 Ga. |
| 7 | 819 27 20-16 | Washer 27/32 x 1-1/4 x 16 Ga. |
| 8 | 812 00 00-29 | Ring Klip #t5304-75 |
| 9 | 532 12 49-37 | Bearing Col Strg Blk |
| 10 | 532 17 51-21 | Link Drag |
| 11 | 810 04 06-00 | Washer Lock Hvy Hlcl Spr 3/8 |
| 13 | 532 13 65-18 | Spacer Brg Axle Front |
| 15 | 532 14 52-12 | Nut Hex Flange Lock |
| 17 | 532 19 07-53 | Shaft Asm Strg |
| 26 | 532 12 68-47 | Bushing Link Drag Blk LR |
| 28 | 819 13 14-16 | Washer 13/32 x 7/8 x 16 Ga. |
| 29 | 817 00 06-12 | Screw 3/8-16 x 3/4 |
| 30 | 876 02 04-12 | Pin Cotter 1/8 x 3/4 Cad |
| 32 | 532 19 27-57 | Rod Tie Wire Form |
| 34 | 810 04 05-00 | Washer Lock Hvy HLCL Spr. 5/16 |
| 36 | 532 15 50-99 | Bushing Strg |
| 37 | 532 15 29-27 | Screw |
| 38 | 532 19 29-16 | Insert Cap Strg Wh |
| 39 | 819 11 38-12 | Washer 11/32- ID x 2-3/8 OD 12 Ga. |
| 40 | 873 54 06-00 | Nut Crownlock 3/8-24 |
| 41 | 532 18 67-37 | Adaptor Wheel Strg |
| 42 | 532 16 96-33 | Boot Steering Shaft |
| 43 | 532 12 17-49 | Washer 25/32 x 1-1/4 x 16 Ga. |
| 44 | 532 19 07-52 | Extension Steering Shaft |
| 46 | 532 12 12-32 | Cap Spindle Fr Top Blk |
| 65 | 532 41 47-36 | Spacer Brace Axle |
| 67 | 872 11 06-18 | Bolt, Rdhd Sqnk 3/8-16 x 2-1/4 |
| 68 | 532 16 98-27 | Axle, Brace |
| 71 | 532 17 51-46 | Steering Asm. |
| 82 | 532 19 99-78 | Bracket Susp Chassis Front |
| 88 | 532 17 51-18 | Bolt Shoulder 7/16-20 |
| 91 | 532 17 55-53 | Clip Steering |
| 95 | 532 18 89-67 | Washer Hardened |
| 97 | 874 78 05-64 | Bolt 5/16-18 unc x 4" L Gr. 5 |

NOTE: All component dimensions given in U.S. inches.
1 inch = 25.4 mm.

TRACTOR - MODEL NO. REN12597 (96011025505), PRODUCT NO. 960 11 02-55 SEAT ASSEMBLY



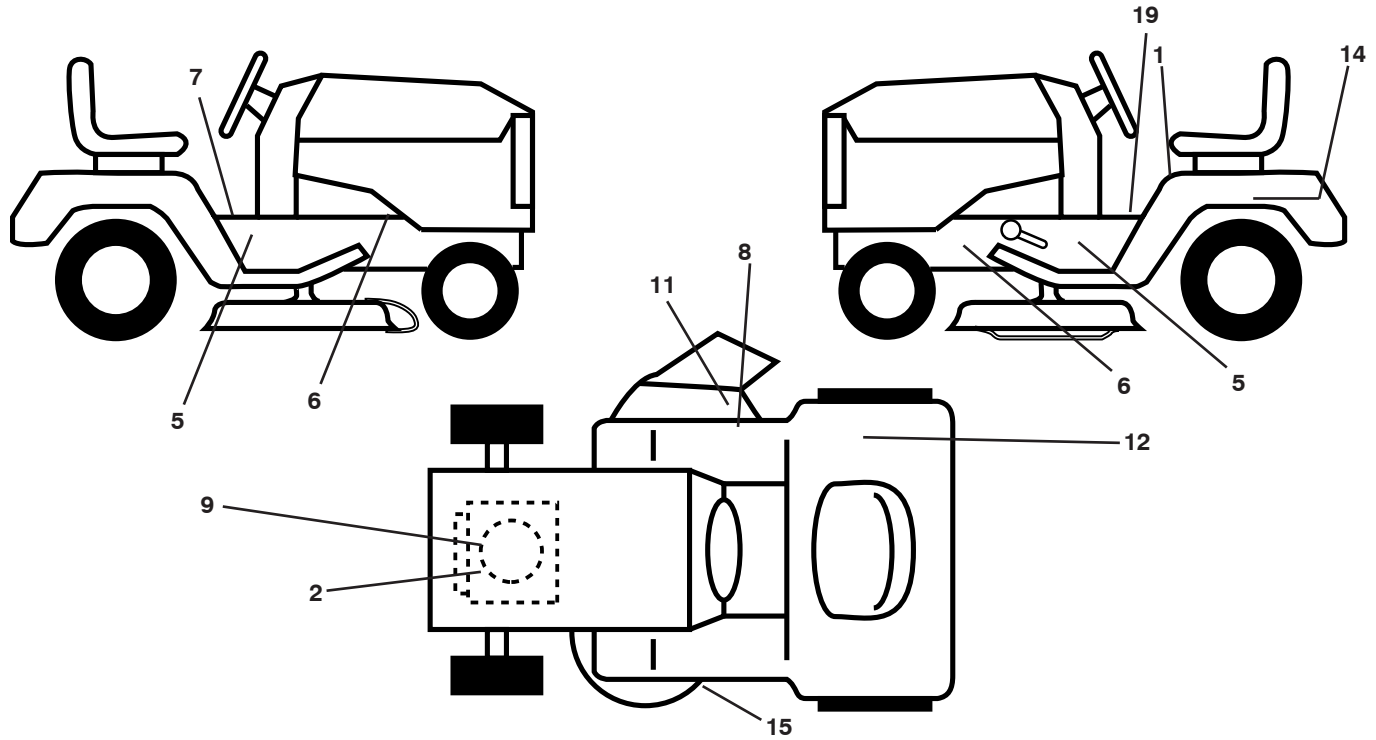
seat_lt.bolt_9

| KEY NO. | PART NO. | DESCRIPTION |
|---------|--------------|--------------------------------|
| 1 | 532 40 10-42 | Seat |
| 2 | 532 14 05-51 | Bracket Pivot Seat 8 720 |
| 3 | 871 11 06-16 | Bolt Fin Hex 3/8-16 unc x 1 |
| 4 | 819 13 16-10 | Washer 13/32 x 1 x 10 Ga |
| 5 | 532 14 50-06 | Clip Push-In |
| 6 | 873 80 06-00 | Nut Hex w/Ins. 3/8-16 unc |
| 7 | 532 12 41-81 | Spring Seat Cprsn 2 250 Blk Zi |
| 8 | 817 00 06-16 | Screw 3/8-16 x 1-1/2 |
| 9 | 819 13 16-14 | Washer 13/32 x 1 x 14 Ga. |
| 10 | 532 19 55-30 | Pan Seat |
| 12 | 532 17 46-48 | Bracket Mounting Switch |
| 13 | 532 12 12-48 | Bushing Snap Blk Nyl 50 Id |

| KEY NO. | PART NO. | DESCRIPTION |
|---------|--------------|---------------------------------|
| 14 | 872 05 04-12 | Bolt Rdhd Sqnk 1/4-20 x 1-1/2 |
| 15 | 532 13 43-00 | Spacer Split 28 x 96 Yel Zinc |
| 16 | 532 12 12-50 | Spring Cprsn 1 27 Blk Pnt |
| 17 | 532 12 39-76 | Nut Lock 1/4 Lge Flg Gr. 5 Zinc |
| 21 | 532 17 18-52 | Bolt Shoulder 5/16-18 unc |
| 22 | 873 80 05-00 | Nut Hex Lock w/Ins 5/16-18 |
| 23 | 871 11 08-14 | Bolt Hex |
| 24 | 819 17 19-12 | Washer 17/32 x 1-3/16 x 12 Ga. |
| 25 | 532 12 70-18 | Bolt Shoulder 5/16-18 x 62 |
| 26 | 810 04 08-00 | Washer Lock Hvy HLCL SPR 1/2 |

NOTE: All component dimensions given in U.S. inches
1 inch = 25.4 mm

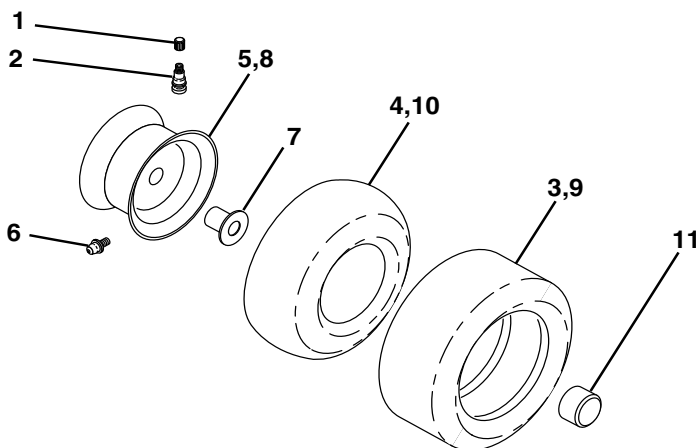
**TRACTOR - MODEL NO. REN12597 (96011025505), PRODUCT NO. 960 11 02-55
DECALS**



| KEY NO. | PART NO. | DESCRIPTION |
|---------|---------------------|---------------------------------|
| 1 | 532 40 03-89 | Decal Warning Symbols CE |
| 2 | 532 19 68-41 | Decal Warning Eng Syms. |
| 5 | 532 40 22-08 | Decal Chassis |
| 6 | 532 15 97-36 | Decal Chassis Hot Muffler |
| 7 | 532 15 97-37 | Decal Brake/Clutch Symbol LT |
| 8 | 532 19 63-57 | Decal Deflect Warning Cutfinger |
| 9 | 532 41 79-27 | Decal Engine HP |
| 11 | 532 18 21-66 | Decal Mower Cut Finger Symbol |
| 12 | 532 18 04-32 | Decal 100 DE/CE |

| KEY NO. | PART NO. | DESCRIPTION |
|---------|---------------------|---------------------------------|
| 14 | 532 14 50-05 | Decal Btry Dngr/PSN P/L Symbol |
| 15 | 532 19 43-02 | Decal V-Belt |
| 19 | 532 14 08-37 | Decal Parking Brake |
| -- | 532 16 25-98 | Decal Drawbar |
| -- | 532 13 83-11 | Decal Handle Lift Height Adjust |
| -- | 532 40 09-01 | Manual Operator's (Euro) |
| -- | 532 40 09-02 | Manual Operator (Scan) |
| -- | 532 42 38-78 | Manual Parts |

WHEELS & TIRES



| KEY NO. | PART NO. | DESCRIPTION |
|---------|--------------|-----------------------------------|
| 1 | 532 05 91-92 | Cap Valve Tire |
| 2 | 532 06 51-39 | Stem Valve |
| 3 | 532 12 41-57 | Tire F Ts 15 x 6 0 - 6 Service |
| 4 | 532 05 99-04 | Tube Front (Service Item Only) |
| 5 | 532 18 33-37 | Rim Asm 6" Front Service |
| 6 | 532 12 49-57 | Fitting Grease (Front Wheel Only) |
| 7 | 532 12 49-59 | Bearing Flange (Front Wheel Only) |
| 8 | 532 18 33-38 | Rim Asm 8" Rear Service |
| 9 | 532 12 39-69 | Tire R Ts 18 x 8 5-8 C Service |
| 10 | 532 12 49-26 | Tube Rear (Service Item Only) |
| 11 | 532 17 50-39 | Cap Axle Blk 1 50 x 1 00 |
| -- | 532 14 43-34 | Sealant, Tire (10 oz. Tube) |

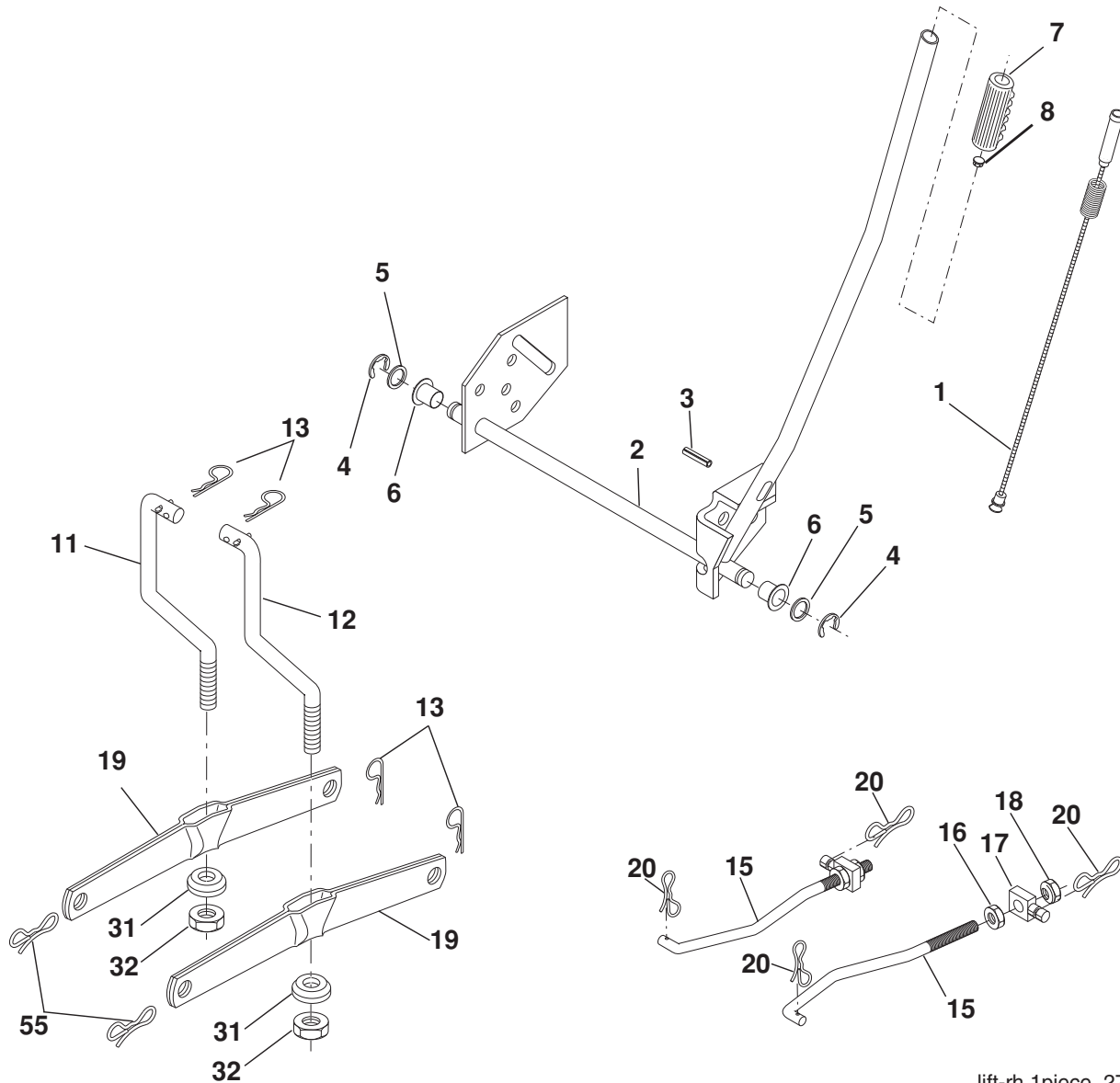
NOTE: All component dimensions given in U.S. inches
1 inch = 25.4 mm

**TRACTOR - MODEL NO. REN12597 (96011025505), PRODUCT NO. 960 11 02-55
MOWER DECK**

| KEY NO. | PART NO. | DESCRIPTION | KEY NO. | PART NO. | DESCRIPTION |
|---------|--------------|---------------------------------|---------|---------------------|---|
| 1 | 532 19 25-56 | Mower Housing Assembly | 72 | 532 19 32-16 | Spring Brake Return |
| 2 | 872 14 05-06 | Bolt Carriage 5/16-18 x 3/4 | 89 | 819 13 13-11 | Washer 13/32 x 13/16 x 11 Ga. |
| 3 | 532 13 80-17 | Bracket Asm Fr. Sway Bar | 107 | 532 13 35-02 | Spacer Retainer |
| 4 | 532 19 25-68 | Bracket Deck Sway Bar 38"/42" | 108 | 532 13 35-03 | Stiffener, Idler Arm |
| 5 | 532 12 46-70 | Retainer Spring | 122 | 532 41 01-89 | Rod, Brake LH |
| 6 | 532 17 80-24 | Bar Sway Deck | 123 | 532 41 01-90 | Rod, Brake RH |
| 7 | 873 80 05-00 | Nut Lock Hex w/Ins. 5/16-18 unc | 144 | 532 19 34-14 | Keeper Belt Idler Tension |
| 8 | 532 19 30-03 | Bolt 3/8-24 x 1.25 Gr. 8 | 148 | 532 16 90-22 | Spring Return Idler |
| 11 | 532 19 39-57 | Blade Mower | 149 | 532 16 58-98 | Retainer Spring Yellow |
| 13 | 532 19 28-72 | Shaft Assembly, Mandrel, Vented | 150 | 819 09 12-10 | Washer 9/32 x 3/4 x 10 Ga. |
| 14 | 532 18 72-81 | Housing, Mandrel, Vented | 152 | 532 19 32-35 | Clutch Cable 38"/46" |
| 15 | 532 11 04-85 | Bearing, Ball, Mandrel | 158 | 817 72 04-08 | Screw Hex Thd Cut 1/4-20 x 1/2 |
| 18 | 872 14 05-05 | Bolt Rdhd Sqnk 5/16-18 x 5/8 | 185 | 532 18 82-34 | Head Asm Cable Clutch |
| 19 | 532 13 28-27 | Bolt, Shoulder | 186 | 817 49 06-44 | Screw Hex Wsh Thdrol 3/8-16x2-3/4 |
| 20 | 532 40 00-95 | Baffle Vortex Front | 187 | 532 19 34-12 | Keeper Belt |
| 21 | 873 68 05-00 | Nut | 188 | 532 16 58-91 | Bolt Carriage Idler |
| 23 | 532 19 25-57 | Bracket, Mower Deflector | 189 | 532 19 25-59 | Stand, Brake |
| 24 | 532 10 53-04 | Cap, Sleeve | 190 | 532 19 25-60 | Arm, Brake |
| 25 | 532 19 70-26 | Spring, Torsion, Deflector | 191 | 532 19 25-61 | Spacer, Brake |
| 26 | 532 11 04-52 | Nut, Push | 193 | 532 19 34-13 | Keeper Belt RH Mandrel |
| 27 | 532 40 14-72 | Shield, Deflector | 194 | 532 19 41-05 | Guard Brake |
| 29 | 532 13 14-91 | Rod, Hinge | 195 | 819 13 32-10 | Washer 13/32 x 2 x 10 Ga. |
| 30 | 532 17 39-84 | Screw Thdrol. | 214 | 532 19 37-82 | Bolt/Washer Asm 5/16-18 |
| 31 | 532 18 76-90 | Washer, Spacer | -- | 532 19 25-58 | Brake Assembly (Includes Stand, Arm and Guard Components) |
| 32 | 532 15 35-32 | Pulley, Mandrel | -- | 532 19 28-70 | Mandrel Assembly (Includes housing, shaft assembly, and bearing only - pulley/nut/washer and blade bolt/washers not included) |
| 33 | 532 40 02-34 | Nut, Toplock | -- | 532 19 36-46 | Replacement Mower, Complete |
| 36 | 532 13 14-94 | Pulley, Idler, Flat | | | |
| 37 | 532 19 31-98 | Pulley Idler Flat | | | |
| 40 | 873 68 06-00 | Nut, Crownlock 3/8-16 unc | | | |
| 45 | 532 12 47-88 | Retainer | | | |
| 55 | 532 13 38-40 | Idler Arm Assembly | | | |
| 56 | 532 16 57-23 | Spacer, Retainer | | | |
| 67 | 532 10 69-32 | Knob | | | |
| 68 | 532 19 32-14 | V-Belt | | | |

NOTE: All component dimensions given in U.S. inches
1 inch = 25.4 mm

**TRACTOR - MODEL NO. REN12597 (96011025505), PRODUCT NO. 960 11 02-55
MOWER LIFT**



lift-rh.1piece_27

| KEY NO. | PART NO. | DESCRIPTION |
|---------|--------------|--------------------------------|
| 1 | 532 40 50-07 | Plunger Asm. Lift Lever |
| 2 | 532 19 80-70 | Shaft Asm Lift |
| 3 | 532 18 88-22 | Pin Groove |
| 4 | 812 00 00-02 | E Ring #5133-62 |
| 5 | 819 21 16-21 | Washer PLTD 21/32 x 1 x 21 Ga. |
| 6 | 532 12 01-83 | Bearing Nylon Blk 629 Id |
| 7 | 532 10 94-13 | Grip Handle |
| 8 | 532 12 45-26 | Button Plunger Black |
| 11 | 532 13 98-65 | Link Lift LH |
| 12 | 532 13 98-66 | Link Lift RH |
| 13 | 532 12 46-70 | Retainer Spring |
| 15 | 532 17 32-88 | Link Front |

| KEY NO. | PART NO. | DESCRIPTION |
|---------|--------------|---------------------------|
| 16 | 873 35 08-00 | Nut Jam Hex 1/2-13 unc |
| 17 | 532 17 56-89 | Trunnion |
| 18 | 873 80 08-00 | Nut Lock w/Wsh 1/2-13 unc |
| 19 | 532 13 98-68 | Arm Suspension Rear |
| 20 | 532 19 42-09 | Spring, Retainer |
| 31 | 532 16 98-65 | Bearing Pvt. Lift |
| 32 | 873 54 06-00 | Nut Crownlock 3/8-24 |
| 55 | 532 19 42-08 | Nut Crownlock 3/8-24 |

NOTE: All component dimensions given in U.S. inches
1 inch = 25.4 mm

SERVICE NOTES
