



REPAIR PARTS MANUAL
MODEL NO. RZLT125H36A
LAWN TRACTOR

Rally

HOW TO USE THIS MANUAL

This manual is designed to provide the customer with a means to identify the parts on his/her tractor when ordering repair parts. The illustrations may or may not represent the actual assemblies; therefore, it is not recommended to use this manual as a guide to assemble or disassemble the tractor. Some hardware and parts are drawn larger in order to more readily identify them.

Each tractor has its own model number.

The model number for your tractor can be found on the fender under the seat.

When ordering parts, always give the following information:

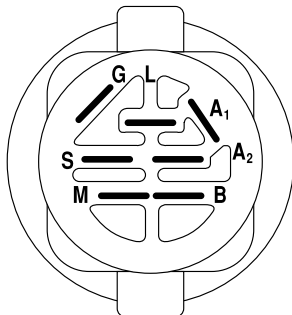
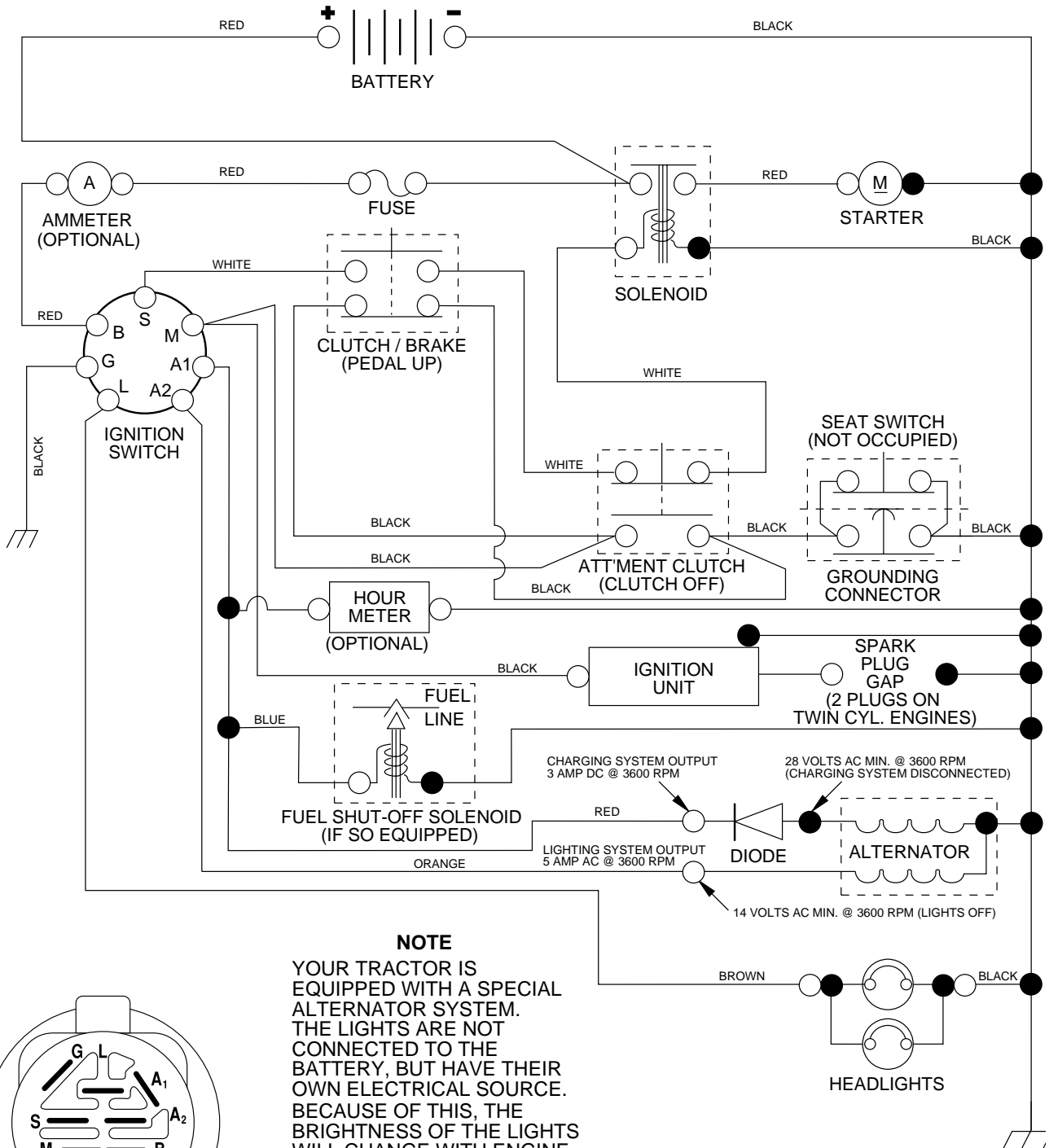
- Product - “Lawn Tractor”
- Model Number - “RZLT125H36A”
- Part Number
- Part Description

TABLE OF CONTENTS

| | |
|------------------------------|--------------|
| SCHEMATIC..... | 3 |
| ELECTRICAL..... | 4-5 |
| CHASSIS..... | 6-7 |
| DRIVE | 8-9 |
| STEERING WHEEL | 10-11 |
| ENGINE | 12-13 |
| MOWER DECK | 14-15 |
| MOWER LIFT LEVER..... | 16 |
| SEAT | 17 |
| DECALS | 18 |
| WARRANTY | 19-20 |

TRACTOR - - MODEL NUMBER RZLT125H36A

SCHEMATIC



IGNITION SWITCH

| POSITION | CIRCUIT | "MAKE" |
|-----------|------------|--------|
| OFF | M+G+A1 | NONE |
| RUN/LIGHT | B+A1 | A2+L |
| RUN | B+A1 | NONE |
| START | B + S + A1 | NONE |

NOTE

YOUR TRACTOR IS EQUIPPED WITH A SPECIAL ALTERNATOR SYSTEM. THE LIGHTS ARE NOT CONNECTED TO THE BATTERY, BUT HAVE THEIR OWN ELECTRICAL SOURCE. BECAUSE OF THIS, THE BRIGHTNESS OF THE LIGHTS WILL CHANGE WITH ENGINE SPEED. AT IDLE THE LIGHTS WILL DIM. AS THE ENGINE IS SPEEDED UP, THE LIGHTS WILL BECOME THEIR BRIGHTEST.

WIRING INSULATED CLIPS

NOTE: IF WIRING INSULATED CLIPS WERE REMOVED FOR SERVICING OF UNIT, THEY SHOULD BE REPLACED TO PROPERLY SECURE YOUR WIRING.

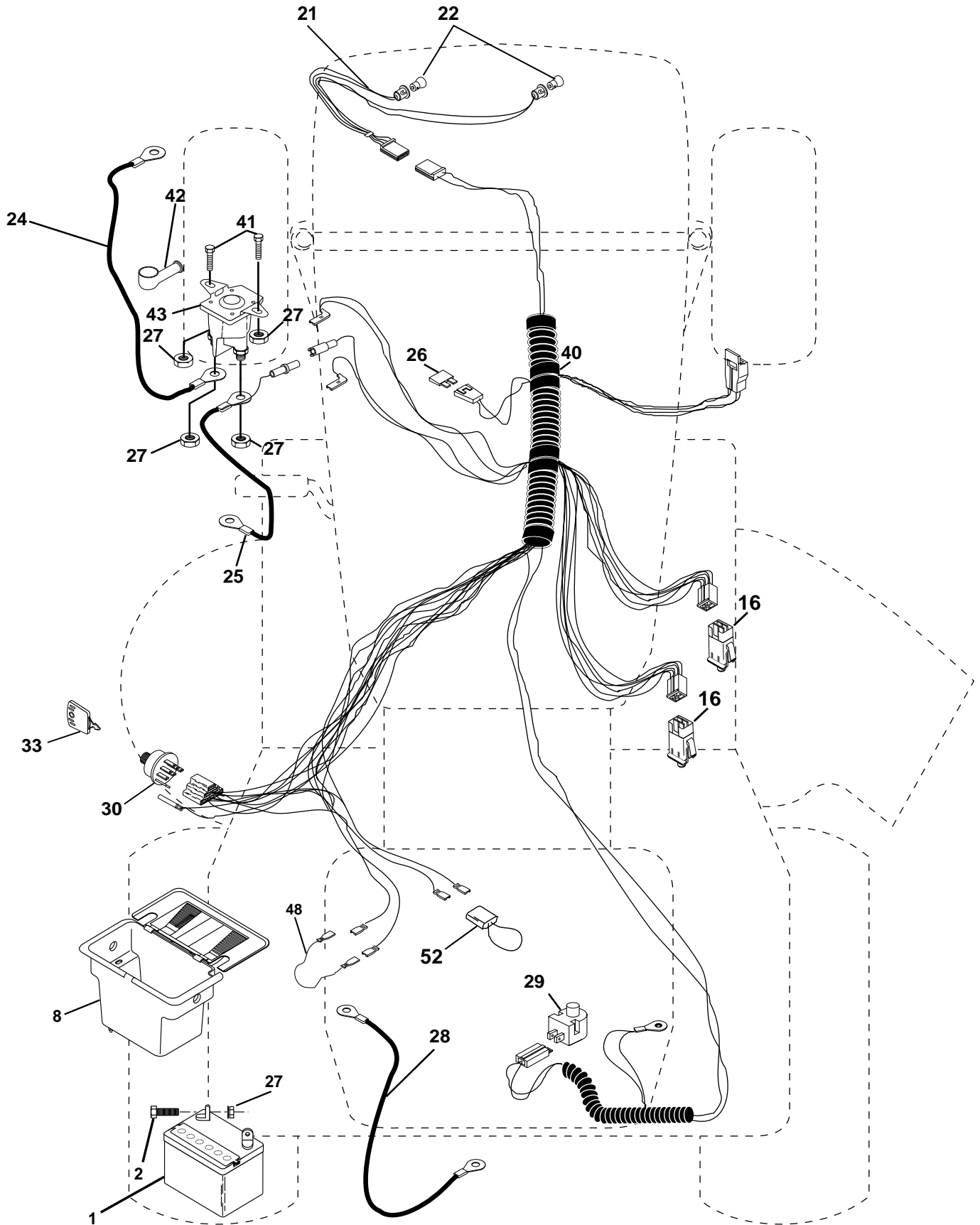
NON-REMOVABLE CONNECTIONS

REMOVABLE CONNECTIONS

REPAIR PARTS

TRACTOR - - MODEL NUMBER RZLT125H36A

ELECTRICAL



REPAIR PARTS

TRACTOR - - MODEL NUMBER RZLT125H36A

ELECTRICAL

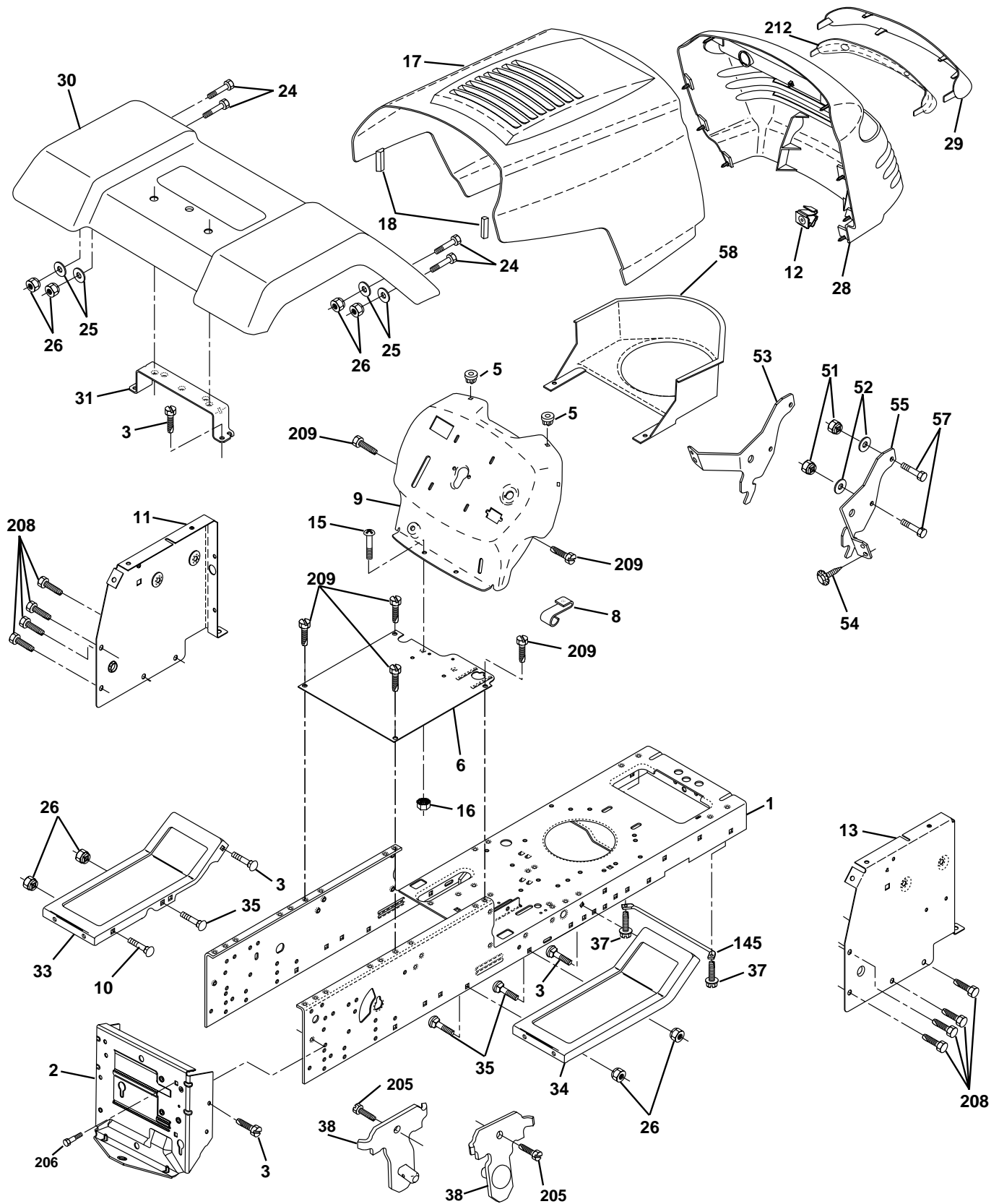
| KEY NO. | PART NO. | DESCRIPTION |
|------------|-------------|---------------------------------|
| 1 | 144925 | Battery 12 Volt 25 AMP |
| 2 | 74760412 | Bolt Hex Hd 1/4-20unc X 3/4 |
| 8 | 156417 | Case Battery |
| 16 | 153664 | Switch Interlock Push-In |
| 21 | 166181 | Harness Asm Light W/4152j |
| 22 | 4152J | Bulb Light #1156 |
| 24 | 4799J | Cable Battery 6 Ga 11" red |
| 25 | 146147 | Cable Battery 6 Ga 44" red |
| 26 | 175158 | Fuse |
| 27 | 73510400 | Nut Keps Hex 1/4-20 |
| 28 | 4207J | Cable Ground 6 Ga 12" black |
| 29 | 121305X | Switch Plunger Nc Gray |
| 30 | 175566 | Switch Ign |
| 33 | 140401 | Key Ign |
| 40 | 170217 | Harness Ignition |
| 41 | 71110408 | Bolt Blk Fin Hex 1/4 - 20 x 1/2 |
| 42 | 131563 | Cover Terminal Red |
| 43 | 175141 | Solenoid |
| 48 | 140844 | Adapter Ammeter |
| 52 | 141940 | Protection Wire Loop |

NOTE: All component dimensions give in U.S. inches
1 inch = 25.4 mm.

REPAIR PARTS

TRACTOR - - MODEL NUMBER RZLT125H36A

CHASSIS AND ENCLOSURES



REPAIR PARTS

TRACTOR - - MODEL NUMBER RZLT125H36A

CHASSIS AND ENCLOSURES

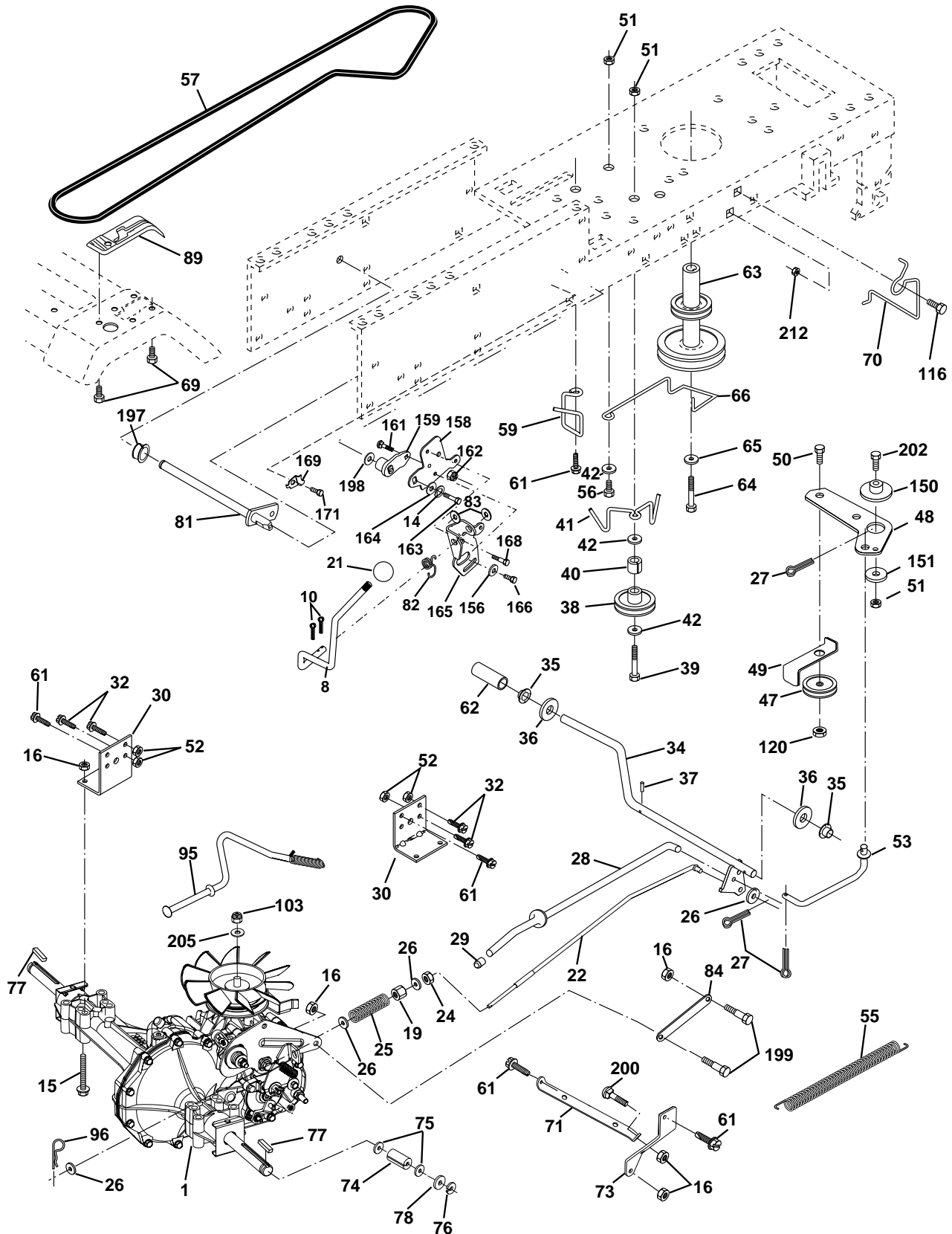
| KEY NO. | PART NO. | DESCRIPTION |
|---------|------------|------------------------------------|
| 1 | 169831 | Chassis |
| 2 | 176554 | Drawbar 12 Ga. |
| 3 | 17060612 | Screw 3/8-16x3/4 |
| 5 | 155272 | BumperHood/Dash |
| 6 | 155923 | Saddle LT Fender Shift |
| 8 | 155138 | Clip Retainer Slide-On |
| 9 | 168347X011 | Dash Private Label |
| 10 | 72140608 | Bolt Carriage 3/8-16 x 1 |
| 11 | 155927 | Panel Pnt Dash Lh |
| 12 | 145660 | Clip Tinnerman Grille P/L |
| 13 | 172107X010 | Panel Dash Rh |
| 15 | 74180512 | Screw, Mach Trhd 5/16-18 UNC x 3/4 |
| 16 | 73510500 | Nut Keps 5/16-18 UNC |
| 17 | 159639X505 | Hood Paint Steel Private Label |
| 18 | 126938X | BumperHood |
| 24 | 74780616 | Bolt Fin Hex 3/8-16unc X 1 Gr. 5 |
| 25 | 19131312 | Washer 13/32 X 13/16 X 12 Ga |
| 26 | 73800600 | Nut Lock Hex W/Ins 3/8-16 Unc |
| 28 | 140434 | Grille/Lens Asm. |
| 29 | 140273X599 | Lens Grille Private Label |
| 30 | 169467X505 | Fender Pnt |
| 31 | 136619 | Bracket Fender |
| 33 | 145244X505 | Footrest Pnt Lh |
| 34 | 145243X505 | Footrest Pnt Rh |
| 35 | 72110606 | Bolt Rdhd Sht Sqnk 3/8-16 X3/4 |
| 37 | 17490508 | Screw Thdrol 5/16-18 x 1/2 Tyt |
| 38 | 175710 | Bracket, Asm. Pivot, Mower Rear |
| 51 | 73800400 | Nut Lock Hex W/Ins 1/4-20 |
| 52 | 19091416 | Washer 9/32 x 7/8 x 16 Ga. |
| 53 | 144697 | Bracket, Grille, LH |
| 54 | 161464 | Screw Hex Wshd 8-18 x 7/8 |
| 55 | 144696 | Bracket, Grille, RH |
| 57 | 74780412 | Bolt Hex 1/4-20 x 3/4 |
| 58 | 150127 | Air Duct P/L |
| 145 | 156524 | Rod Pivot Chassis/Hood |
| 205 | 17490608 | Screw Thdrol 3/8-16 x 1/2 |
| 206 | 170165 | Bolt, Shoulder 5/16-18 |
| 208 | 17670608 | Screw 3/8-16 x 1/2 B.D. |
| 209 | 17000612 | Screw Hxwsh 3/8-16 x 3/4 |
| 212 | 156229 | Insert Lens |
| -- | 5479J | Plug Button |

NOTE: All component dimensions given in U.S. inches
1 inch = 25.4 mm

REPAIR PARTS

TRACTOR - - MODEL NUMBER RZLT125H36A

DRIVE



REPAIR PARTS

TRACTOR - - MODEL NUMBER RZLT125H36A

DRIVE

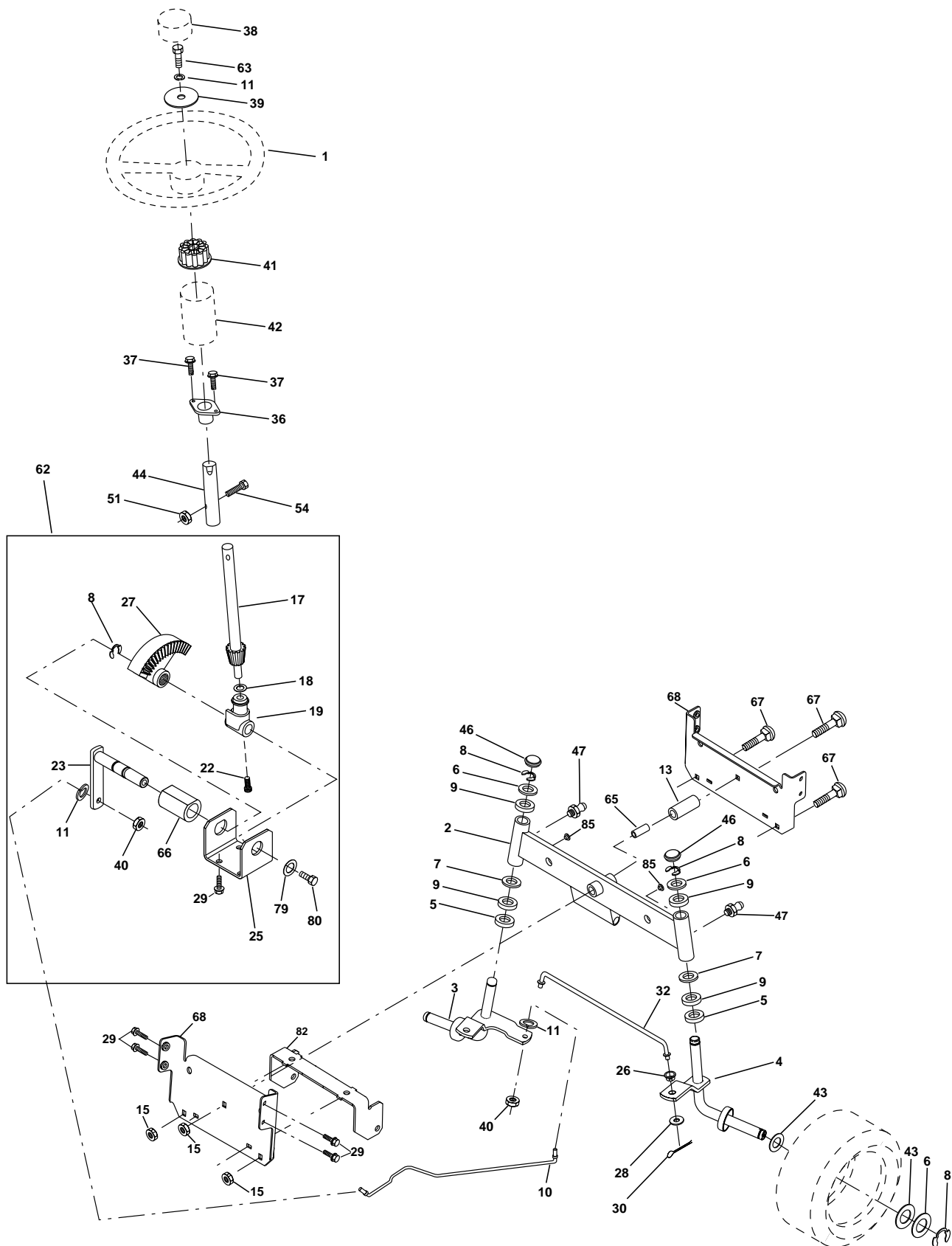
| KEY NO. | PART NO. | DESCRIPTION | KEY NO. | PART NO. | DESCRIPTION |
|---------|----------|---|---------|------------|-----------------------------------|
| 1 | ----- | Transaxle, Hydro Gear Model 322-0510 (Order parts from the transaxle manufacturer) | 65 | 10040700 | Washer |
| 8 | 165619 | Rod, Shift | 66 | 154778 | Keeper, Belt Engine Hydro |
| 10 | 76020416 | Pin, Cotter 1/8 x 1 | 69 | 142432 | Screw Hex Wsh Hi-Lo 1/4-1/2 Unc |
| 14 | 10040400 | Washer Lock 1/4 | 70 | 134683 | Guide, Belt, Mower Drive RH |
| 15 | 74490544 | Bolt Hex Flghd 5/16-18 Gr. 5 | 71 | 169183 | Strap, Torque, Lh |
| 16 | 73800500 | Nut, Lock Hex w/Ins 5/16-18 UNC | 73 | 169182 | Strap, Torque, Rh |
| 19 | 73800600 | Nut, Lock Hex w/Wsh 3/8-16 UNC | 74 | 137057 | Spacer, Axle |
| 21 | 106933X | Knob Rd. 1/2-13 Plstc. Thds. Blk. | 75 | 121749X | Washer 25/32 x 1-1/4 x 16 Ga. |
| 22 | 169498 | Rod, Brake | 76 | 12000001 | Ring, E |
| 24 | 73350600 | Nut | 77 | 123583X | Key, Square |
| 25 | 106888X | Spring, Rod, Brake | 78 | 121748X | Washer 25/32 x 1-5/8 x 16 Ga. |
| 26 | 19131316 | Washer 13/32 x 13/16 x 16 Ga. | 81 | 165596 | Shaft Asm Cross |
| 27 | 76020412 | Pin, Cotter 1/8 x 3/4 | 82 | 123782X | Spring, Torsion |
| 28 | 145204 | Rod, Parking Brake | 83 | 19171216 | Washer 17/32 x 3/4 x 16 Ga. |
| 29 | 71673 | Cap, Parking Brake | 84 | 169843 | Link Transaxle |
| 30 | 174973 | Bracket, Transmission | 89 | 169373X428 | Console, Shift |
| 32 | 74760512 | Bolt Hex 5/16-18 UNC x 3/4 | 95 | 170201 | Control Asm Bypass Hydro |
| 34 | 155071 | Shaft, Foot Pedal | 96 | 4497H | Spring, Retainer 1" |
| 35 | 120183X | Bearing, Nylon | 120 | 74760624 | Bolt Hex 3/8-16 |
| 36 | 19211616 | Washer | 103 | 73940800 | Nut, Hex Jam Toplock 1/2-20 UNF |
| 37 | 1572H | Pin, Roll | 116 | 72140608 | Bolt Rdhd Sq Neck 3/8-16 x 1 |
| 38 | 131494 | Pulley, Idler, Flat | 150 | 165850 | Bushing Bellcrank Grd Drive |
| 39 | 74760644 | Bolt | 151 | 19133210 | Washer 13/32 x 2 x 10 |
| 40 | 4470J | Spacer, Split | 156 | 166002 | Washer 5/16 x 1.0 x 1.25 |
| 41 | 165838 | Keeper, Belt, Idler | 158 | 165589 | Bracket Shift Mount |
| 42 | 19131312 | Washer 13/32 x 13/16 x 12 Ga. | 159 | 165494 | Hub Tapered Flange Shift |
| 47 | 127783 | Pulley, Idler, V-Belt | 161 | 72140406 | Bolt Rdhd Sqnk 1/4-20 x 3/4 Gr. 5 |
| 48 | 154407 | Bellcrank Clutch Grnd Drustl | 162 | 73680400 | Nut Crownlock 1/4-20 Unc |
| 49 | 123205X | Retainer, Belt | 163 | 74780416 | Bolt Hex Fin 1/4-20 x 1 |
| 50 | 74760624 | Bolt | 164 | 19091010 | Washer 5/8 x .281 x 10 Ga. |
| 51 | 73680600 | Nut | 165 | 165623 | Bracket Pivot Lever |
| 52 | 73680500 | Nut Crownlock 5/16-28 | 166 | 166880 | Screw 5/16 x 1.0 x .125 |
| 53 | 105710X | Link, Clutch | 168 | 165492 | Bolt Shoulder 5/16-18 x .561 |
| 55 | 105709X | Spring, Return, Clutch | 169 | 165581 | Plate Fastener Cross Shaft |
| 56 | 74760620 | Bolt, Hex 3/8-16 UNC x 1-1/4 | 171 | 17490608 | Screw Thdrol 3/8-16 x 1/2 |
| 57 | 140294 | V-Belt, Drive | 197 | 169613 | Nyliner Snap-in 5/8" ID |
| 59 | 169691 | Keeper, Belt, Center | 198 | 169593 | Washer Nyl 7/8ID x .105"HYD |
| 61 | 17060612 | Screw, 3/8-16 x 3/4 | 199 | 169612 | Bolt Shoulder 5/16-18 Unc |
| 62 | 8883R | Cover, Pedal | 200 | 72140508 | Bolt Rdhd Sqnk 5/16-18 Unc x 1 |
| 63 | 140186 | Pulley, Engine | 202 | 72110612 | Bolt Car SH 3/8-16 x 1-1/2 Gr 5 |
| 64 | 71170764 | Bolt Hex 7/16 x 4 Gr. 5 | 205 | 19171616 | Washer 17/32 x 1 x 16 Ga |
| | | | 212 | 145212 | Nut Hexflange Lock |

NOTE: All component dimensions given in U.S. inches
1 inch = 25.4 mm

REPAIR PARTS

TRACTOR - - MODEL NUMBER RZLT125H36A

STEERING ASSEMBLY



REPAIR PARTS

TRACTOR - - MODEL NUMBER RZLT125H36A

STEERING ASSEMBLY

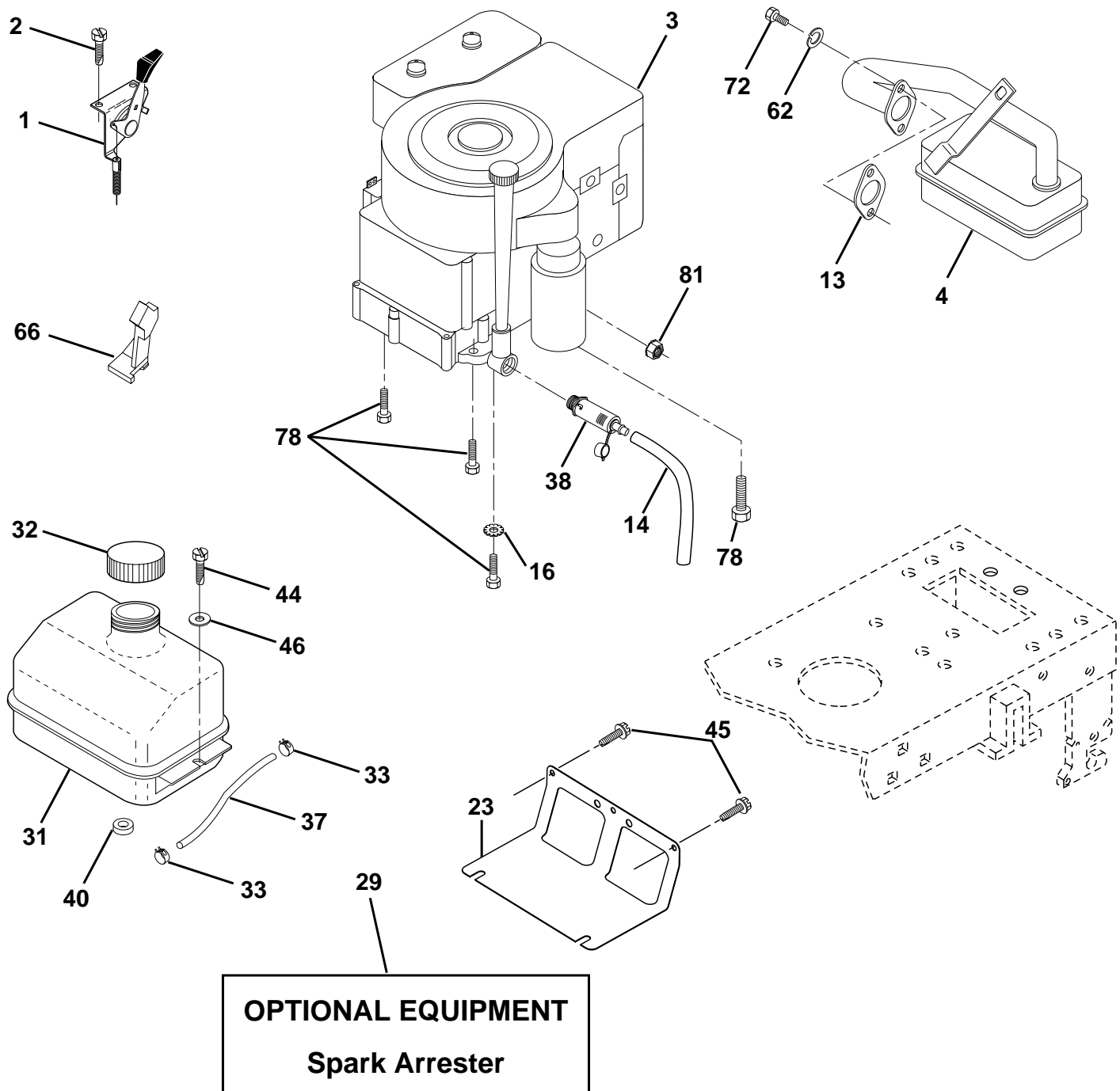
| KEY NO. | PART NO. | DESCRIPTION |
|---------|------------|----------------------------------|
| 1 | 140044X428 | Wheel Steering Blk |
| 2 | 154427 | Axle Asm Fr LT W/gzks 38/42 |
| 3 | 169840 | Spindle Asm LH |
| 4 | 169839 | Spindle Asm RH |
| 5 | 6266H | Bearing Race Thrust Harden |
| 6 | 121748X | Washer 25/32 X 1-5/8 X 16 Ga |
| 7 | 19272016 | Washer 27/32 X 1-1/4 X 16 Ga |
| 8 | 12000029 | Ring Klip #t5304-75 |
| 9 | 3366R | Bearing Col Strg Blk |
| 10 | 169832 | Link Drag |
| 11 | 10040600 | Washer Lock Hvy Hlcl Spr 3/8 |
| 13 | 136518 | Bearing Axle |
| 15 | 145212 | Nut Lock Flange |
| 17 | 156546 | Shaft Asm Strg Private Label |
| 18 | 57079 | Washer Thrust .515 x .750 x .033 |
| 19 | 160395 | Support Shaft Steering |
| 22 | 165857 | Screw Hex |
| 23 | 165851 | Shaft Asm Pitman |
| 25 | 154406 | Bracket Steering |
| 26 | 126847X | Bushing Link Drag Blk LR |
| 27 | 136874 | Gear Sector |
| 28 | 19131416 | Washer 13/32 X 7/8 X 16 Ga |
| 29 | 17060612 | Screw 3/8-16x3/4 |
| 30 | 76020412 | Pin Cotter 1/8 X 3/4 Cad |
| 32 | 130465 | Rod Tie Wire Form 19 75 Mech |
| 36 | 155099 | Bushing Strg |
| 37 | 152927 | Screw TT #10-32 X 5 X 3/8 Flange |
| 38 | 140045X428 | Cap Strg Wh AYP P/L |
| 39 | 19133812 | Washer 13/32 X 2-3/8 X 12 Ga |
| 40 | 7810H | Nut Lock Center 3/8-24unf |
| 41 | 100711L | Adaptor Wheel Strg 758/753 ID |
| 42 | 145054X428 | Boot Steering |
| 43 | 121749X | Washer 25/32 X 1 1/4 X 16 Ga |
| 44 | 153720 | Shaft Extention Steering |
| 46 | 121232X | Cap Spindle Fr Top Blk |
| 47 | 6855M | Fitting Grease |
| 51 | 73800500 | Nut Lock Hex w/Ins 5/16-18 |
| 54 | 74780520 | Bolt Fin Hex 5/16-18 Unc x 1-1/4 |
| 62 | 167902 | Kit Steering Asm Ser |
| 63 | 74780616 | Bolt Fin Hex 3/8-16 x 1 Gr. 5 |
| 65 | 160367 | Spacer Axle |
| 66 | 154404 | Bearing Arm Pitman |
| 67 | 72140618 | Bolt Rdhd 3/8-16 x 2-1/4 |
| 68 | 169827 | Brace Axle |
| 79 | 19132012 | Washer 13/32 x 1-1/4 x 12 |
| 80 | 74950612 | Bolt Hex Nylon 3/8-16 x 3/4 |
| 82 | 169835 | Bracket, Susp. Chassis, Front |
| 85 | 133835 | Fastener, Christmas Tree |

NOTE: All component dimensions given in U.S. inches.
1 inch = 25.4 mm.

REPAIR PARTS

TRACTOR - - MODEL NUMBER RZLT125H36A

ENGINE



REPAIR PARTS

TRACTOR - - MODEL NUMBER RZLT125H36A

ENGINE

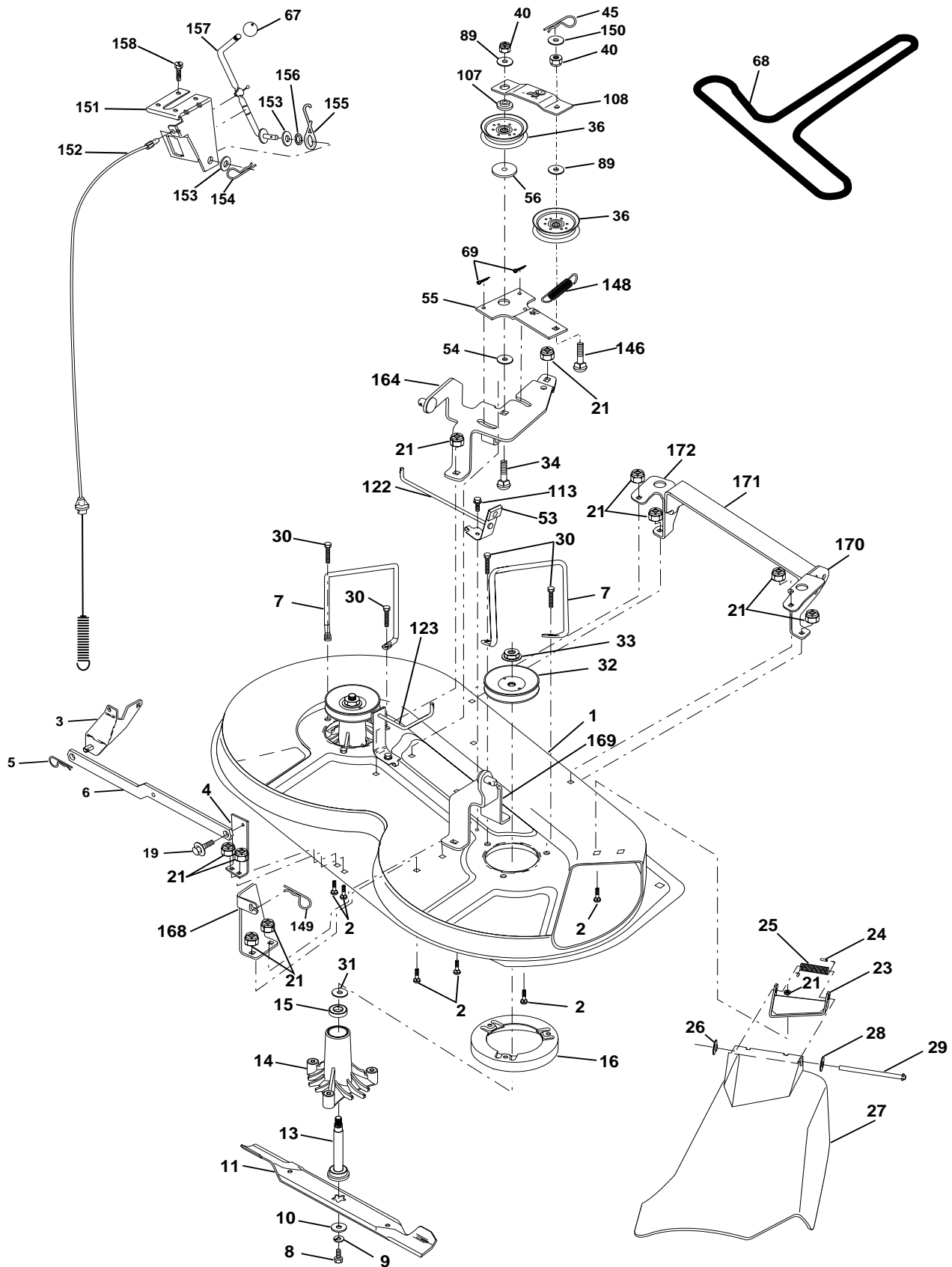
| KEY NO. | PART NO. | DESCRIPTION |
|---------|----------|---|
| 1 | 170865 | Control Th/ch Flag |
| 2 | 17720410 | Screw Hex Thd Cut 1/4-20x5/8 T |
| 3 | ----- | Engine, Briggs Model 289707 Order Parts From Engine Manufacturer |
| 4 | 137348 | Muffler LT B&S 14HP IC OHV |
| 13 | 165291 | Gasket Eng |
| 14 | 148456 | Tube Drain Oil Easy |
| 16 | 11050600 | Washer Lock Ext Tooth 3/8 |
| 23 | 169837 | Shield Brn/Dbr Guard |
| 29 | 137180 | Kit Spark Arrestor (Flat Scrn) |
| 31 | 109202X | Tank Fuel Front |
| 32 | 140527 | Cap Asm Fuel W/sym Vented |
| 33 | 123487X | Clamp Hose Black |
| 37 | 137040 | Line Fuel 20" |
| 38 | 148315 | Plug Drain Oil Easy |
| 40 | 124028X | Bushing Snap Nyl Blk Fuel Line |
| 44 | 17670412 | Screw Hexwsh Thdrol 1/4-20x3/4 |
| 45 | 17000612 | Screw Hxwsh 3/8-16 x 3/4 BD |
| 46 | 19091416 | Washer 9/32 X 7/8 X 16 Ga |
| 62 | 10040500 | Washer Lock Hvy Hlcl Spr 5/16 |
| 66 | 127951 | Stop Throttle 3000 RPM |
| 72 | 71070512 | Screw Hexhd Cap 5/16-18x 3/4 |
| 78 | 17060620 | Screw Thdrol 3/8-16x1-1/4 TYTT |
| 81 | 73510400 | Nut Flange 1/4-20 Starter Nut |

NOTE: All component dimensions given in U.S. inches.
1 inch = 25.4 mm.

REPAIR PARTS

TRACTOR - - MODEL NUMBER RZLT125H36A

MOWER DECK



REPAIR PARTS

TRACTOR - - MODEL NUMBER RZLT125H36A

MOWER DECK

| KEY NO. | PART NO. | DESCRIPTION |
|---------|------------|-----------------------------------|
| 1 | 174595 | Mower Deck Assembly |
| 2 | 72140506 | Bolt |
| 3 | 138017 | Bracket Assembly, Sway Bar, Front |
| 4 | 175654 | Bracket Sway Bar |
| 5 | 4939M | Retainer Spring |
| 6 | 130832 | Arm, Suspension |
| 7 | 140608 | Keeper Belt Lh |
| 8 | 850857 | Bolt, Hex 3/8-24 x 1.25 Gr. 8 |
| 9 | 10030600 | Washer, Lock |
| 10 | 140296 | Washer, Hardened |
| 11 | 138496 | Blade |
| 13 | 137645 | Shaft Assembly, Mandrel, Vented |
| 14 | 128774 | Housing, Mandrel, Vented |
| 15 | 110485X | Bearing, Ball, Mandrel |
| 16 | 174493 | Stripper, Vented Mower Deck |
| 19 | 132827 | Bolt, Shoulder |
| 21 | 73680500 | Nut Crownlock 5/16-18 UNC |
| 23 | 136631 | Bracket, Deflector |
| 24 | 105304X | Cap, Sleeve |
| 25 | 123713X | Spring, Torsion, Deflector |
| 26 | 110452X | Nut, Push |
| 27 | 175029X428 | Shield, Deflector |
| 28 | 19111016 | Washer 11/32 x 5/8 x 16 Ga. |
| 29 | 121980X | Rod, Hinge |
| 30 | 157722 | Screw Thdrol Washer Head |
| 31 | 129963 | Washer, Spacer |
| 32 | 153531 | Pulley, Mandrel |
| 33 | 137266 | Nut, Toplock, Flanged |
| 34 | 72110614 | Bolt |
| 36 | 131494 | Pulley, Idler, Flat |
| 40 | 73680600 | Nut Crownlock 3/8-16 UNC |
| 45 | 4497H | Retainer |
| 53 | 130840 | Brake Asm Mower Vented |
| 54 | 133943 | Washer, Hardened |

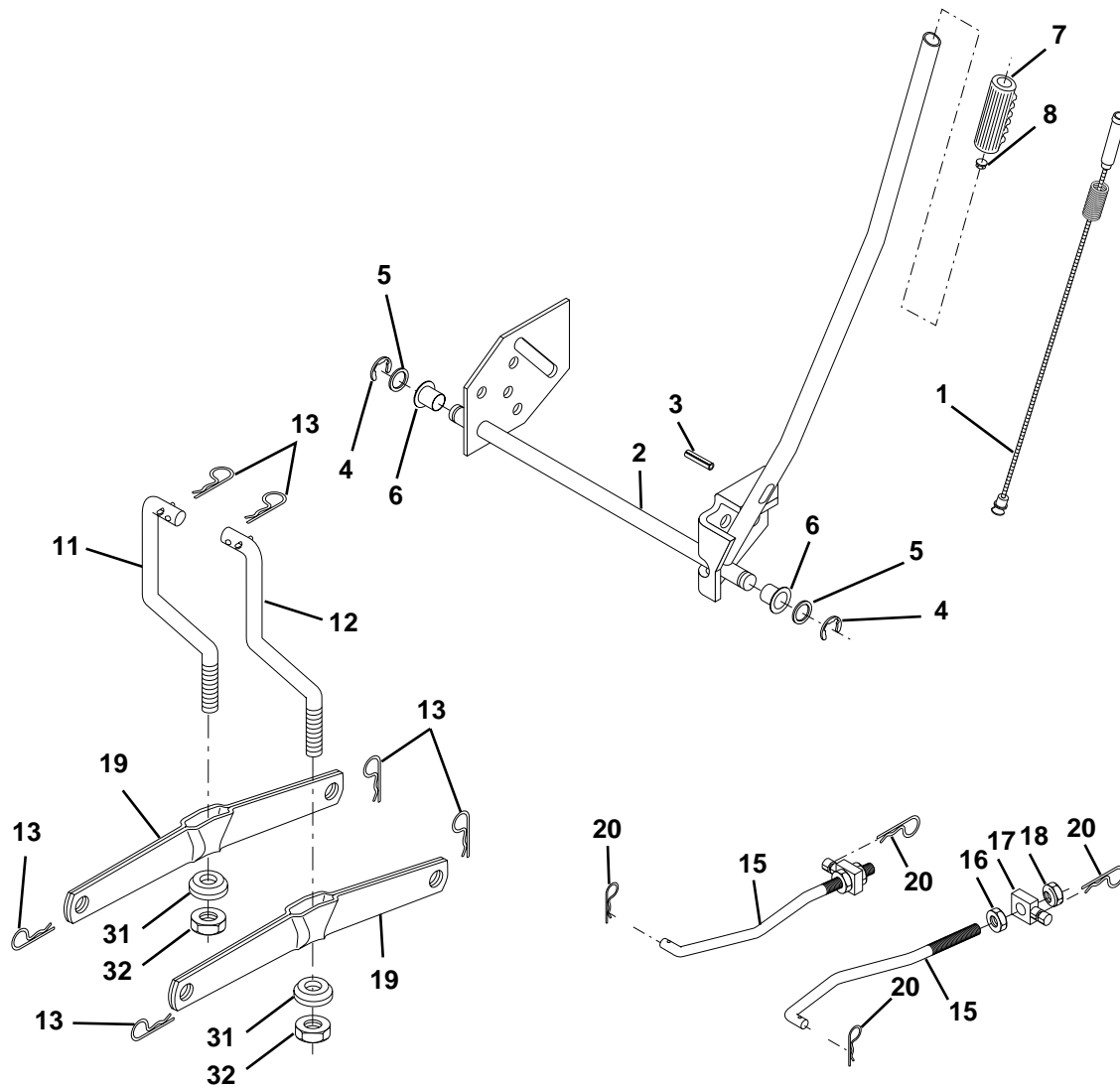
| KEY NO. | PART NO. | DESCRIPTION |
|---------|----------|--|
| 55 | 133840 | Arm, Idler |
| 56 | 165723 | Spacer, Retainer |
| 67 | 106932X | Knob Round |
| 68 | 174978 | V-Belt |
| 69 | 76020312 | Pin cotter 3/32 x 3/4 Cad |
| 89 | 19131612 | Washer 13/32 x 1 x 12 Ga. |
| 107 | 133502 | Spacer Arm Idler Upr Hdw |
| 108 | 133503 | Stiffener Arm Idler Upper |
| 113 | 17490508 | Screw Thdrol 5/16-18 x 1/2 |
| 122 | 174505 | Rod Brake Mandrel Lh |
| 123 | 174504 | Rod Brake Mandrel Rh |
| 146 | 165891 | Bolt Carriage Idler |
| 148 | 169022 | Spring Return Idler |
| 149 | 165898 | Retainer Spring Yellow Zinc |
| 150 | 19091216 | Washer 9/32 x 3/4 x 16 Ga. |
| 151 | 169670 | Bracket Clutch |
| 152 | 176079 | Cable Clutch |
| 153 | 169674 | Washer Flat 3/8" Type B |
| 154 | 169675 | Spring Retainer |
| 155 | 169671 | Spring Retention Lever |
| 156 | 169672 | Spacer |
| 157 | 169669 | Rod Clutch |
| 158 | 17720410 | Screw Hex Thd Cut 1/4-20 x 5/8 |
| 164 | 174976 | Idler Asm Support & Susp. 36" |
| 168 | 172377 | Bracket Deck Cable 36" |
| 169 | 174977 | Bracket Asm Suspension Rh |
| 170 | 172359 | Bracket Suspension Rf |
| 171 | 165237 | Brace Support Susp. Frt. CRD/36" |
| 172 | 172355 | Bracket Suspension Lf |
| -- | 130794 | Mandrel Assembly (Includes Key Numbers 8-10, 13-15, 31 and 32) |
| -- | 175254 | Mower Deck, Complete |

NOTE: All component dimensions given in U.S. inches
1 inch = 25.4 mm

REPAIR PARTS

TRACTOR - - MODEL NUMBER RZLT125H36A

LIFT



| KEY NO. | PART NO. | DESCRIPTION |
|---------|----------|-------------------------------|
| 1 | 159460 | Wire Asm Inner/Sprg w/plunger |
| 2 | 159471 | Shaft Asm Lift |
| 3 | 105767X | Pin Groove |
| 4 | 12000002 | E Ring #5133-62 |
| 5 | 19211621 | Washer 21/32 X 1 x 21 Ga |
| 6 | 120183X | Bearing Nylon |
| 7 | 109413X | Grip Handle Bicycle Matte Blk |
| 8 | 124526X | Button Plunger |
| 11 | 139865 | Link Lift LH |
| 12 | 139866 | Link Lift RH |

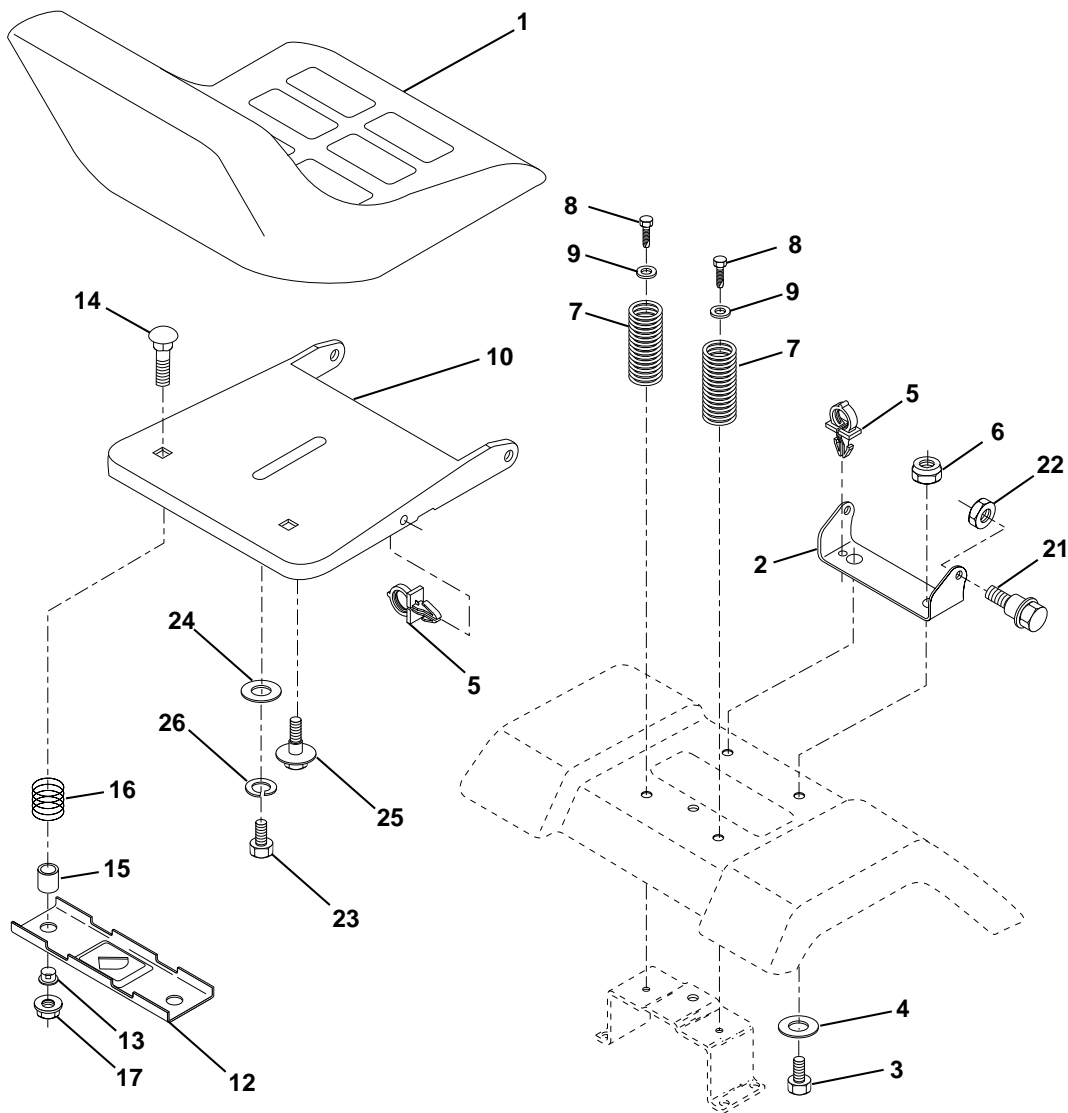
| KEY NO. | PART NO. | DESCRIPTION |
|---------|----------|---------------------------|
| 13 | 4939M | Retainer Spring |
| 15 | 173288 | Link Front |
| 16 | 73350800 | Nut Jam Hex 1/2-13 Unc |
| 17 | 130171 | Trunnion Blk Zinc |
| 18 | 73800800 | Nut Lock W/wsh 1/2-13 Unc |
| 19 | 139868 | Arm Suspension Rear |
| 20 | 163552 | Retainer Spring |
| 31 | 169865 | Bearing Pvt. Lift |
| 32 | 73540600 | Nut Crownlock 3/8-24 |

NOTE: All component dimensions given in U.S. inches
1 inch = 25.4 mm

REPAIR PARTS

TRACTOR - - MODEL NUMBER RZLT125H36A

SEAT ASSEMBLY



| KEY NO. | PART NO. | DESCRIPTION |
|---------|----------|---------------------------------|
| 1 | 127426X | Seat |
| 2 | 140551 | Bracket Pivot Seat |
| 3 | 71110616 | Bolt Hex 3/8 - 16 x 1 Blk |
| 4 | 19131610 | Washer 13/32 x 1" |
| 5 | 145006 | Clip Push-In |
| 6 | 73800600 | Locknut, Hex W/Ins 3/8 - 16 Unc |
| 7 | 124181X | Spring Seat Cprsn 2 250 Blk Zi |
| 8 | 17000616 | Screw Thdrol 3/8-16 x .5 |
| 9 | 19131614 | Washer 13/32 x 1 x 14 Ga |
| 10 | 174894 | Pan Seat |
| 12 | 121246X | Bracket Mounting Switch |
| 13 | 121248X | Bushing Snap Blk Nyl 50 Id |

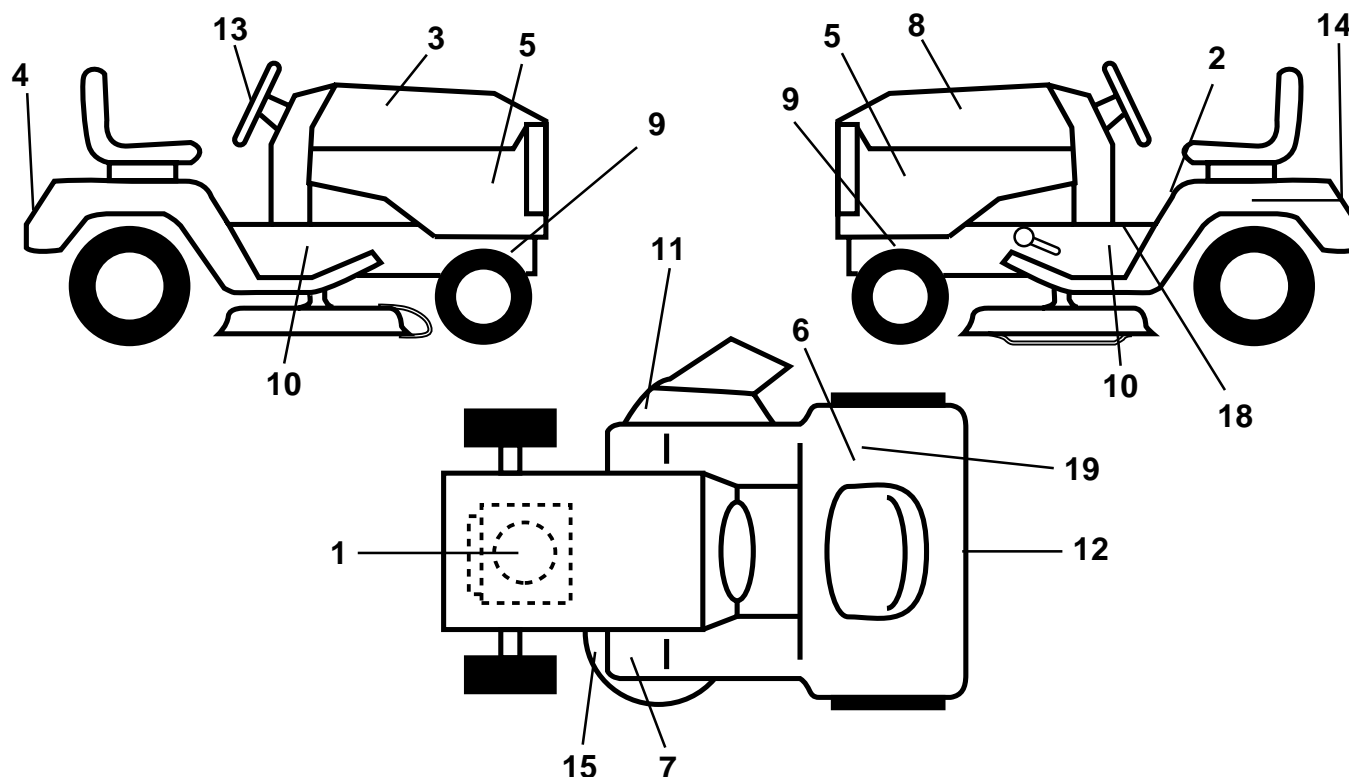
| KEY NO. | PART NO. | DESCRIPTION |
|---------|----------|---------------------------------|
| 14 | 72050412 | Bolt Rdhd Sht Nk 1/4-20 x 1-1/2 |
| 15 | 134300 | Spacer Split |
| 16 | 121250X | Spring Cprsn |
| 17 | 123976X | Nut Lock 1/4 Lge Flg Gr 5 Zinc |
| 21 | 171852 | Bolt Shoulder 5/16-18 UNC-2A BD |
| 22 | 73800500 | Locknut, Crown 5/16-18 UNC |
| 23 | 71110814 | Bolt Hex Black |
| 24 | 19171912 | Washer 17/32 x 1-3/16 x 12 Ga |
| 25 | 127018X | Bolt Shoulder 5/16-18 x 62 |
| 26 | 10040800 | Washer Lock Hvy Hlcl Spr 1/2 |

NOTE: All component dimensions given in U.S. inches
1 inch = 25.4 mm

REPAIR PARTS

TRACTOR - - MODEL NUMBER RZLT125H36A

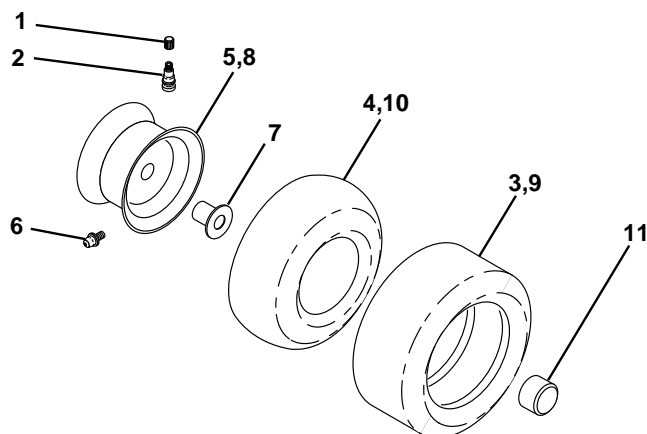
DECALS



| KEY NO. | PART NO. | DESCRIPTION |
|---------|----------|-------------------------------|
| 1 | 170839 | Decal Engine |
| 2 | 145498 | Decal Read Owners Manual Syms |
| 3 | 153266 | Decal Hood RH |
| 4 | 170752 | Decal Hood/Fender |
| 5 | 135866 | Decal Hood 12.5 H.P. |
| 6 | 145437 | Decal Europe Stand CE |
| 7 | 159737 | Decal Brake/Clutch Symbol LT |
| 8 | 153267 | Decal Hood LH |
| 9 | 159736 | Decal Chassis Hot Muffler |
| 10 | 167328 | Decal Chassis Hydro |
| 11 | 145494 | Decal Mower Cutting Symbol |
| 12 | 169210 | Decal By Pass LT Hydro |

| KEY NO. | PART NO. | DESCRIPTION |
|---------|----------|-----------------------------------|
| 13 | 146902 | Decal Wheel Steering |
| 14 | 145005 | Decal Battery Dan/Poi/P/L Symbols |
| 15 | 136832 | Decal V-Belt Sch |
| 18 | 140837 | Decal Saddle Brake Parking |
| 19 | 126187X | Decal 100 DBA |
| -- | 133671 | Pad Footrest |
| -- | 138311 | Decal Handle LFT Height Adj |
| -- | 162598 | Decal Drawbar Load Limit |
| -- | 177036 | Manual Operator's (Euro) |
| -- | 177037 | Manual Operator's (Scan) |
| -- | 177038 | Manual Parts |

WHEELS & TIRES



| KEY NO. | PART NO. | DESCRIPTION |
|---------|------------|-----------------------------------|
| 1 | 59192 | Cap Valve Tire |
| 2 | 65139 | Stem Valve |
| 3 | 106222X | Tire F Ts 15 X 6 0 - 6 Service |
| 4 | 59904 | Tube Front (Service Item Only) |
| 5 | 106732X427 | Rim Asm 6" (front White Service) |
| 6 | 278H | Fitting Grease (Front Wheel Only) |
| 7 | 9040H | Bearing Flange (Front Wheel Only) |
| 8 | 106108X427 | Rim Asm 8" (rear White Service) |
| 9 | 124635X | Tire R Ts 18 x 8.5-8 C Service |
| 10 | 7152J | Tube Rear (Service Item Only) |
| 11 | 104757X428 | Cap Axle Blk 1 50 X 1 00 |
| -- | 144334 | Sealant, Tire (10 oz. Tube) |

NOTE: All component dimensions given in U.S. inches
1 inch = 25.4 mm.



SERVICE POLICY WARRANTY



Issued January 1980
Revised January 1991

LIMITED WARRANTIES FOR NEW PEERLESS GEAR POWER TRAIN COMPONENTS

A. Products Warranted

Peerless Gear and Machine Division of Tecumseh Products Company ("Tecumseh"), subject to the limitations contained below, will, at its option, repair or replace, without charge for parts or labor only, any part of a new Power Train Component (which as used herein means and includes the transaxle, gear box, transmission, differential and right angle drives, and any part of the Power Train Component), EXCEPT any new Power Train Component incorporated in equipment used for commercial or rental purposes, which is found upon examination by any Tecumseh Authorized Service Outlet or by Tecumseh's factory in Grafton, Wisconsin, to be DEFECTIVE IN MATERIAL AND/OR WORKMANSHIP if received by Tecumseh or a Tecumseh Authorized Service Outlet for such examination within TWO YEARS from the date of sale to the original consumer purchaser of Peerless Series 820, 900, 910, 915, 920, 930 transaxles and Series 1100 angle drive and ONE YEAR for all other Peerless products. New Power Train Components incorporated in equipment used for commercial purposes are warranted in the same manner and to the same extent EXCEPT such Power Train Components are warranted for NINETY (90) DAYS ONLY, and must be received by Tecumseh or by a Tecumseh Authorized Service Outlet for such examination within 90 days from the date of sale to the original purchaser. New Power Train Components Incorporated in equipment used for rental purposes are warranted in the same manner and to the same extent EXCEPT such Power Train Components are warranted for THIRTY (30) DAYS ONLY, and must be received by Tecumseh or a Tecumseh Authorized Service Outlet within 30 days from the date of sale to the original purchaser.

B. Products And Items Not Warranted

1. Alterations or Modifications of Power Train Components.
2. Accidents, Normal Maintenance, Failure to follow the Original Equipment Manufacturer's Manual.

This warranty covers only parts of new Power Train Components which are found upon examination to be defective in material or workmanship as delivered to the original purchaser. This warranty does not cover defects caused by depreciation or damage caused by normal wear, accidents, improper maintenance, improper use or abuse of the product, failure to follow the instructions contained in an Instruction Manual for the operation of the Power Train Component and parts. The cost of normal maintenance and replacement of service items which are not defective shall be paid for by the original purchaser.

C. Securing Warranty Service

Warranty service can be arranged for by contacting either a Tecumseh Authorized Service Outlet (any Tecumseh Registered Service Dealer, Tecumseh Authorized Service Distributor, or Tecumseh Central Warehouse Distributor) or by contacting Tecumseh, c/o Service Manager, Engine and Transmission Group Service Division, 900 North Street, Grafton, Wisconsin 53024. Warranty service can only be performed by a Tecumseh Authorized Service Outlet or by Tecumseh at its factory in Grafton, Wisconsin. At the time of requesting warranty service, evidence must be presented of the date of sale to the original purchaser. The purchaser shall pay any charges for making service calls and/or for transporting the product to and from the place where the inspection and/or warranty work is performed. The purchaser shall be responsible for any damage or loss incurred in connection with the transportation of Power Train Components and/or part(s) of the Power Train Components submitted for inspection and/or warranty work.

D. Limitation of Damages and Implied Warranties

The foregoing EXPRESSED WARRANTY IS IN LIEU OF ALL OTHER EXPRESS WARRANTIES. Neither Tecumseh nor any of its affiliates makes any warranties, representations or promises, written or oral, as to the quality of the Power Train Component or any of its parts, other than as set forth herein.

ANY IMPLIED WARRANTY OF MERCHANTABILITY OR FITNESS FOR A PARTICULAR PURPOSE, TO THE EXTENT THAT EITHER MAY APPLY TO ANY PART(S) OF POWER TRAIN COMPONENTS, SHALL BE LIMITED IN DURATION TO THE PERIODS OF THE EXPRESSED WARRANTIES DEFINED IN PARAGRAPH A HEREOF. IN NO EVENT WILL TECUMSEH BE LIABLE FOR ANY INCIDENTAL, CONSEQUENTIAL OR SPECIAL DAMAGES AND/OR EXPENSES. Some states do not allow limitations on how long an implied warranty lasts or the exclusion or limitation of incidental or consequential damages, so the above limitation(s) or exclusion(s) may not apply to you. This warranty gives you specific legal rights and you may also have other legal rights which vary from state to state.

E. No Dealer Warranty

Tecumseh neither assumes nor authorizes any other person, natural or corporate, to assume for Tecumseh any other obligations or liabilities in connection with or with respect to any part(s) of a Power Train Component. The seller or dealer of part(s) of a Power Train Component has no authority, whatsoever, to make any representations or promises on behalf of Tecumseh or to modify the terms or limitations of Tecumseh's warranty in any way.

LIMITED WARRANTY

The Manufacturer warrants to the original consumer purchaser that this product as manufactured is free from defects in materials and workmanship. For a period of one (1) year from date of purchase by the original consumer purchaser, we will repair or replace, at our option, without charge for parts or labor incurred in replacing parts, any part which we find to be defective due to materials or workmanship. This Warranty is subject to the following limitations and exclusions.

1. This warranty does not apply to the engine. Please contact your nearest dealer where they will send the machine to the engine manufacturer.
2. Transportation charges for the movement of any power equipment unit or attachment are the responsibility of the purchaser. Transportation charges for any parts submitted for replacement under this warranty must be paid by the purchaser unless such return is requested by your dealer.
3. Battery Warranty: On products equipped with a Battery, we will replace, without charge to you, any battery which we find to be defective in manufacture, during the first ninety (90) days of ownership. After ninety (90) days, we will exchange the Battery, charging you 1/12 of the price of a new Battery for each full month from the date of the original sale. Battery must be maintained in accordance with the instructions furnished.
4. The Warranty period for any products used for rental or commercial purposes is limited to 90 days from the date of original purchase.
5. This Warranty applies only to products which have been properly assembled, adjusted, operated, and maintained in accordance with the instructions furnished. This Warranty does not apply to any product which has been subjected to alteration, misuse, abuse, improper assembly or installation, delivery damage, or to normal wear of the product.
6. Exclusions: Excluded from this Warranty are belts, blades, blade adapters, normal wear, normal adjustments, standard hardware and normal maintenance.
7. In case of any problem within the boundaries of this warranty, contact the nearest department store, indicate the model number, serial number and the date of purchase of your machine. This warranty does not apply to accidental damages. All implicit warranties are limited to the same time frames. Or contact:

E.M. Services
54 Rue Lambrechts
92400 Courbevoie
France
Telephone: (1) 46678078
Fax: (1) 46678095

THIS WARRANTY DOES NOT APPLY TO INCIDENTAL OR CONSEQUENTIAL DAMAGES. ANY IMPLIED WARRANTIES ARE LIMITED TO THE SAME TIME PERIODS STATED HEREIN.

Rally